



# UPDATE NOTES

2024.1

March 2024

# Table of Contents

---

<b>Table of Contents</b> .....	<b>2</b>
<b>2024.1 Update Notes</b> .....	<b>4</b>
Quarterly Updates .....	5
Update Guide .....	5
Academy and Community Resources .....	5
Installing STEP 2024.1 .....	6
<b>2024.1 Update Guide</b> .....	<b>7</b>
Updated STEP Workbench user interface .....	7
MongoDB supported versions are updated .....	7
STEPXML schema changes from 2023.4 to 2024.1 .....	7
Action required: Reduction in retention of State Log entries from 11.1 and forward .....	8
Support, platform, and system admin information .....	9
Update: New on-premises deployment architecture .....	9
Online help / documentation changes .....	10
<b>General Enhancements and Changes</b> .....	<b>12</b>
Updated STEP Workbench user interface .....	12
New public methods for Scripting API and Extension API .....	13
SaaS Self-Service UI improved user experience .....	14
Elasticsearch version support update .....	14
Elasticsearch event processor runs concurrent background processes .....	14
Product MDM for Automotive .....	15
Conditional data validity for Globally Configured Unfolding Data Container .....	15
LOV Value IDs in data container keys .....	15
<b>Web UI Enhancements and Instrument Developments</b> .....	<b>16</b>
New 'Label' field for Globally Configured Multi Edit Data Containers .....	16

---

New default 'Task Mode' .....	16
Instrument advancements .....	17
Value history for Globally Configured Unfolding Data Container .....	17
Improved user feedback in workflows .....	18
<b>New Machine Learning Matcher for SaaS .....</b>	<b>19</b>
<b>DemoUp Cliplister DAM Integration .....</b>	<b>20</b>
<b>Data Exchange Enhancements and Changes .....</b>	<b>22</b>
PDX Onboarding Channel Configurator UI extension .....	22
PDX Onboarding via Product MDM .....	23
Encryption of data and assets from STEP to PDX .....	24
Kafka message key and headers metadata .....	25
Exporting existing, absent, and deleted values .....	26
Context-specific replacement rules for STEPXML imports .....	27
MongoDB supported versions .....	27
Enhancements to the ECLASS Advanced Editor Screen .....	27
ETIM Taxonomy Importer enhancements .....	29
<b>Platform and Software Support Changes .....</b>	<b>30</b>
Current Updates .....	30
Future Updates and End-of-Life (EOL) Notifications .....	30
Server and client support .....	30
Update: New on-premises deployment architecture .....	30
Baseline EOL .....	31
<b>Miscellaneous Bugfixes .....</b>	<b>33</b>

# 2024.1 Update Notes

These update notes outline the new, enhanced, and modified features introduced in this update. Take note that some changes necessitate action, so it is crucial to review these notes thoroughly. They complement the Stibo Systems Enterprise Platform (STEP) Online Help, which offers comprehensive details on both existing and new system functionality, providing detailed explanations and step-by-step instructions for use, as applicable.

---

Update highlights include the following:

- **Workbench Facelift:** The refreshed look and feel of the STEP Workbench provides a more consistent and modern interface that aligns with existing UIs and UI guidelines, contributing to a cohesive and improved overall user experience. (MDM Platform)
- **Instrument:** Development continues in Instrument to expand flexibility and advance user experience. Improvements include functionality around organizing data, handling references, importing assets in bulk, and enriching data in data containers. (Product MDM)
- **Simplified Matching:** Streamlining the process of creating and fine-tuning efficient match rules involves providing pre-trained Artificial Intelligence B2B/B2C Machine Learning (AI/ML) Matchers. This reduces the skill and effort needed to establish a matching algorithm, leading to faster setup times and increased scalability. (Customer, Supplier, and Location MDM)

Additional highlights are included in supplemental materials such as update overview slide decks and update-specific videos. These resources are available, along with these update notes, on Stibo Systems' Support Portal and within the Customer and Partner Communities.

---

Stibo Systems consistently creates updates to align with the changing demands of the market and the preferences of our valued customers. Each update brings a multitude of benefits, incorporating enhancements inspired by user requests. This note-set summarizes a diverse array of new features, enhancements, and other changes -- those mentioned above and much more:

Update notes are accessible by clicking on the links below:

- [2024.1 Update Guide](#)
- [General Enhancements and Changes](#)
- [Web UI Enhancements and Instrument Developments](#)
- [New Machine Learning Matcher for SaaS](#)
- [DemoUp ClipLister DAM Integration](#)
- [Data Exchange Enhancements and Changes](#)

- Platform and Software Support Changes
- Miscellaneous Bugfixes

**Note:** Product Data Exchange (PDX) updates typically follow a different cadence than STEP updates. PDX-specific update notes and online help are available within the PDX solution. Once logged into the tool, click Help Center > Documentation using the left navigation panel. Documentation opens in a new tab.

## Quarterly Updates

Updates are identified by the year and quarter in which they are introduced to customers. The first four digits (2024) indicate the year of the update. The last digit (1) indicates the calendar quarter. To learn more about update frequency, including target update times, and end-of-life baseline support dates, refer to the new STEP Update and End-of-Life Information topic in the System Update and Patch Notes documentation.

There are no regularly scheduled maintenance patches. However, there are times an ad-hoc maintenance patch must be made available to allow for system hotfixing. It is important that users read the documentation available for those updates. Action may be needed by on-premises customers to install the maintenance patches so that they can apply hotfixes, if / when applicable.

## Update Guide

In addition to the individual update notes, upgrading customers should read the 2024.1 Update Guide. This guide provides information that existing customers need to know prior to upgrading. This includes actions required for deprecated components and unsupported functionality.

***The Update Guide includes information about actions that need to be taken prior to upgrading.***

**Important:** Some functionality described within these notes is controlled via licenses and/or component installations and may not be available on your system.

## Academy and Community Resources

### Stibo Systems Communities

We strongly encourage all **customers** and **partners** to actively participate in their dedicated Stibo Systems' Communities, fostering collaboration with fellow users. These update notes and other update materials, including videos, are also available within each Community. Stay updated on upcoming events and much more by registering today.

## Stibo Systems Academy

Maximize your investment in Stibo Systems Master Data Management (MDM) by taking Academy courses and completing our certification programs. The MDM Academy provides hands-on training opportunities for both customers and partners, aiming to enhance your understanding of Stibo Systems' MDM solutions. Comprehensive details regarding classes and programs can be found on our website:

<https://www.stibosystems.com/services-support/mdm-academy>.

## Installing STEP 2024.1

For SaaS environments, updates can be done in the SaaS Self-Service UI or (if not available) by raising a request with Stibo Systems Support. More information on the update process in the SaaS Self-Service UI can be found in the Upgrade Environment section in the in-built User Guide.

For on-premises customers, the baseline (and additional components) can be installed using these commands:

```
./spot --upgrade=step:2024.1
```

For on-prem systems, the SPOT `--upgrade` command should be used to find compatible components that can be added at the same time as the baseline patch (i.e., `--upgrade=a11`). Refer to the SPOT Program topic of the System Administration Guide found in Downloadable Documentation. For assistance, contact Stibo Systems Technical Services.

For customers that have custom add-on components and/or if Stibo Systems Support is deploying your system updates, submit an update request via the Stibo Systems Service Portal.

*This document is intended for use by active Stibo Systems Enterprise Platform (STEP) users and partners and describes the above and other new functionality and improvements in greater detail. It does not serve as a replacement for the online help, which includes additional information on previously existing and new system functionality, as well as more detailed explanations and step-by-step instructions for use, when appropriate.*

# 2024.1 Update Guide

## Summary

Keeping your current system updated offers numerous benefits. And, remember: SaaS makes updates easy!

- Get the newest and most advanced STEP software to stay ahead of your competition.
- Harness new capabilities and enhancements to elevate the user experience, boost productivity, enhance efficiency, and address emerging security threats.
- Stay up-to-date with updates for enhanced security, supportability, compatibility with third-party applications, adherence to the latest industry standards, and more.
- Support new business initiatives, opening doors for expanding solution usage and maximizing business value.
- Benefit from improved system performance.

**Customer action may be required.** Before updating to 2024.1 from an older version, customers should be aware of certain system changes. The list that follows may not be comprehensive; however, along with the full update note set, it provides a starting point for update evaluation.

For on-prem deployed systems, it is always recommended to use the latest version of SPOT (regardless of the current STEP version in use). If updating via the --upgrade command, using the latest SPOT version is required.

## Details

### Updated STEP Workbench user interface

STEP Workbench has been restyled to provide a modern and consistent user experience for administrators and users who work in the workbench.

For more information, refer to the General Enhancements and Changes update note.

### MongoDB supported versions are updated

Supported versions of MongoDB used in the outbound integration endpoint (OIEP) delivery method now include the version 7.0. Versions 3.6 and earlier are no longer supported.

For more information, refer to the Data Exchange Enhancements and Changes update note.

### STEPXML schema changes from 2023.4 to 2024.1

There were no changes to PIMOutputTemplate.xsd.

These are the changes to PIM.xsd:

- Added: STEP-ProductInformation@ApproximateMemoryRequirement

When using STEPXML Configuration Export, STEP will add this to the generated file. The tag has been added to the XSD so the import can correctly validate the XML.

Refer to the Data Exchange Enhancements and Changes update note for additional information on the following changes:

- Added: ReplacementValuesType@ContextID

Replacement of values can now be performed in a specific context.

- Added: ReplaceCrossReferencesType@ContextID

Replacement of cross references can now be performed in a specific context.

- Added: ReplaceClassificationReferencesType@ContextID

Replacement of classification references can now be performed in a specific context.

- Added: ReplaceProductReferencesType@ContextID

Replacement of product references can now be performed in a specific context.

- Changed: STEP-ProductInformation@ExportValidAndAbsent

Use of this directive will now include empty calculated attributes, provided calculated attributes are set to be exported. The directive can now be used together with @ExportDeletedData (defined in PIMOutputTemplate.xsd).

## Action required: Reduction in retention of State Log entries from 11.1 and forward

It has been noted that, as part of upgrading to 11.1, some customers missed the update note on SaaS migration performance—especially the note of date driven purge of old State Log entries.

Introduced was a cleanup process for transition log entries on products, entities, and classifications that are older than a configurable number of days, which defaults to 93 days. The deletion of these old entries will not take effect immediately upon update to 11.1 (and newer versions) or when subsequently changing the configuration. Instead the removal of the old transition log entries is integrated into the mechanism that writes to the transition log. When new entries are made in the transition log, old entries are removed. For performance reasons, old log entries are only removed when adding new entries to the transition log. Cleanup of old log entries improves system performance as well as the amount of time it takes to migrate an on-premises environment to SaaS. While the number of days is configurable, it is not advisable to increase the number of days, but instead to reduce it.

If old State Log entries are important, customers must adjust the property defining the retention of these. If no action is taken, when updating to 11.1 and newer versions, log entries older than 93 days will be deleted and are unrecoverable. While the number of days is configurable, it is not advisable to increase the number of days, but instead to reduce it.

Refer to the State Log Tab topic in the Workflows documentation for details.



## Support, platform, and system admin information

Below is a table outlining the end-of-life schedule for the STEP updates shown:

Update	Update Available to Customers	EOL for systems not enrolled in continuous updates	EOL for systems enrolled in continuous updates
10.2	June 8, 2021	May 1, 2024	N/A
10.3	December 8, 2021	November 1, 2024	N/A
11.0	June 8, 2022	June 8, 2025	N/A
11.1	November 30, 2022	November 30, 2025	N/A
11.2	June 7, 2023	March 7, 2026	N/A
2023.3	September 27, 2023	September 30, 2024	N/A
2023.4	December 13, 2023	June 13, 2026	N/A
2024.1	March 27, 2024	March 31, 2025	September 30, 2024

Refer to the updated STEP Update and End-of-Life Information topic in the System Update and Patch Notes section for more information about quarterly update target dates and support end dates for future updates. Additional Platform and Software Support information can be found in the Platform and Software Support Changes topic in the 2024.1 updates notes.

Customers should update as soon as possible to the latest version of the Stibo Systems Enterprise Platform (STEP). Contact Stibo Systems Support if you have questions and/or to receive help and guidance on how to update to a supported version.

Software errors reported for the versions shown above may be rejected after the listed effective dates. Application support issues in progress for the updates being desupported will be closed on the desupport date. It is not possible to extend the support services for desupported versions.

### Update: New on-premises deployment architecture

**Important:** In order to allow customers more time for preparations, Stibo Systems is postponing the introduction of the new on-premises architecture by three months.

One of Stibo Systems' strategic focuses is on delivering a superior SaaS service, which leads to changes in our overall architecture to introduce more and more containerized microservices. These changes cannot be deployed on-premises or in a private cloud without changes to the deployment architecture. As first published in the 2023.3 update notes, to allow on-premises customers to continue to update STEP, starting with the 2024.3 update (and not for STEP 2024.2, as originally communicated), these customers need to change the way that Stibo Systems' software is deployed on-premises so it is aligned with how Stibo Systems' deploys in SaaS. Updates to 2024.3 and subsequent updates will require a new deployment architecture where the current application server architecture is replaced by a containerized architecture—just as in SaaS. This in turn requires extra hardware due to an overhead in running the SaaS architecture on-premises. Application operations like starting and stopping the application will be similar in complexity to today—but different.

While the new architecture will be available with the 2024.3 update, on-premises customers are encouraged to update to 2024.4, when available and if possible, since it is supported for a longer time period (24 months) than the 12 months that 2024.3 is supported. Refer to the STEP Update and End-of-Life Information topic for more information about update target dates and support end dates for various versions of STEP.

The database deployment architecture will be exactly the same, so database administration along with backup / restore will remain the same. Any deployment of InDesign and Elasticsearch will also remain the same. Only the application server architecture is changed. On-premises and private cloud customers will receive more detailed documentation separately.

This notification is also included in its entirety in the Platform and Software Support Changes update note.

## Online help / documentation changes

With every update, documentation updates occur. In addition to online help that is updated as part of the projects listed in this update note set, users should be aware of the following documentation updates when updating to 2024.1:

- The Upgrade Guide has changed names to Update Guide to align with other changes made in the renaming of the release notes (to update notes). This change extends to online help, also, where you will find the System Release and Patch Notes section renamed to System Update and Patch Notes. The content / intent of the materials is the same. This is only a naming change.
- Workbench images in documentation are being updated to show the restyled UI. This is an ongoing project that will continue over the next several updates.
- The STEP Update and End-of-Life Information has been updated to make it easier to understand update and EOL information.
- A new Instrument User Interface topic gives users instructions on how to access STEP Instrument Documentation, which is separate from the STEP Documentation. Documentation is also available within the Update Information dashboard within the Stibo Systems Support Portal.

Additionally, the Instrument Documentation link on your system's Start Page has been renamed to 'STEP Instrument Documentation,' making it easier for users to find all documentation sets from the Resources section. STEP Instrument Documentation will be included with all systems starting with 2024.1.

Resources
<a href="#">About STEP</a>
<a href="#">STEP 'n' Design</a>
<a href="#">STEP API Documentation</a>
<a href="#">STEP Documentation</a>
<a href="#">STEP Instrument Documentation</a>
<a href="#">STEP Performance Analysis</a>
<a href="#">STEP System Administration</a>
<a href="#">Web UI Component Report</a>
<a href="#">Workbench Launchers</a>

- With the 2024.1 update, the Environmental, Social and Governance (ESG) Data Management package becomes generally available to customers. Documentation in support of the ESG Data Management solution, as mentioned in the 2023.4 notes, is now available in online help. The enablement documentation describes the benefits of implementing the solution for companies managing compliance with ESG requirements, and outlines how to use the solution in detail. For more information, refer to the ESG Solution Enablement section of the documentation.
- A new topic has been added to the PDX Onboarding documentation called Controlling the PDX Channel for Product Onboarding - Multiple Languages. This topic describes how to configure STEP to handle languages in the PDX tool. This topic is available for those updating to 2024.1.
- Industry Standard Mapper functionality was introduced with the 2023.4 update along with enhanced Data Onboarding capabilities. Documentation for both is new to the 2024.1 online help: Industry Standard Mapper and Data Onboarding.
- Documentation under the Elasticsearch Setup section has moved to the System Setup documentation.
- The Print Publisher topic in the Publisher (Adobe InDesign Integration) documentation has been updated to include information about how users can find Adobe InDesign® release and functionality updates (including font information) using Adobe's Help Center and other Adobe resources.
- Within the Stibo System Support Portal, two dashboards have been renamed:
  - Release Information is now Update Information
  - Release Documentation Videos is Update Documentation Videos
- The GDSN Receiver Solution Enablement section was moved under the Product MDM Solution Enablement section in the Solution Enablement documentation.
- 2023.3-MP1 and 2023.4-MP1 became available in February 2024. The update notes for each can be found in the System Update and Patch Notes section.

# General Enhancements and Changes

## Summary

In-Memory enhancements have been made to avoid deadlock scenarios and increase the efficiency of the In-Memory database component for STEP.

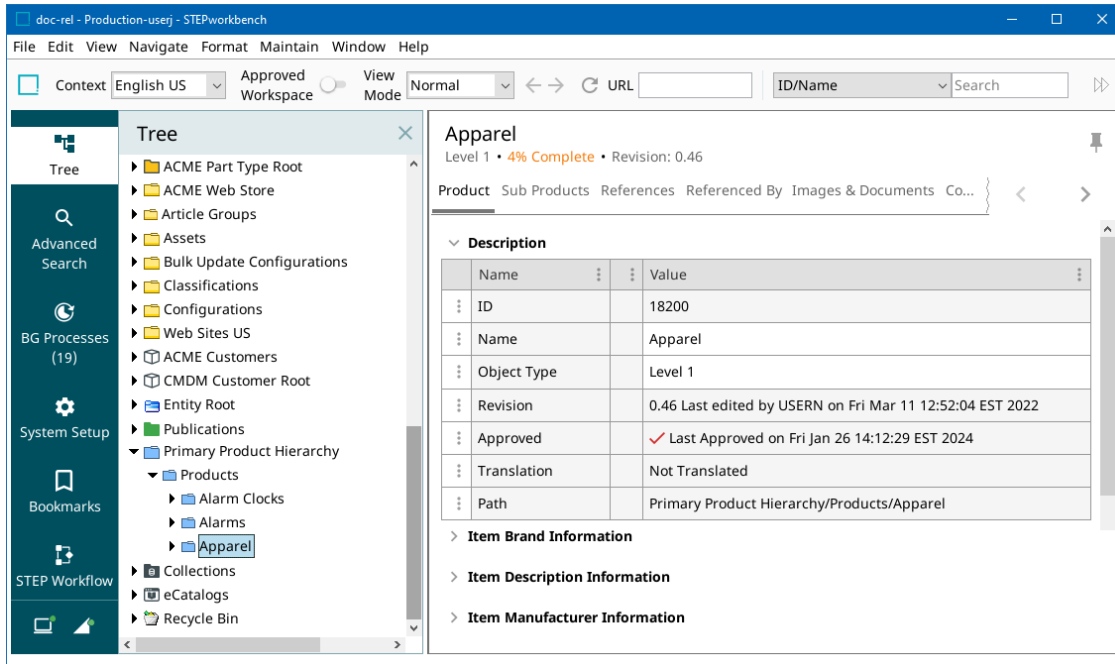
Also, these additional enhancements and changes have been made as part of the 2024.1 update and are described in the Details section that follows:

- The **updated STEP Workbench user interface** provides a more modern, familiar, and consistent user experience across all STEP user interfaces.
- Several **API methods are now public**, making it easier for developers to validate data in JavaScript business rules and extensions. The Scripting API and the Extension API now include new public methods for collections, attributes, and lists of values (LOVs).
- The **SaaS Self-Service UI** now includes a better overall user experience and styling, along with improved functionality for viewing, filtering, and editing configuration properties.
- Elasticsearch **version support update**.
- The **Elasticsearch event processor** now has the ability to delegate indexing to multiple Elasticsearch indexing background processes that run concurrently.
- **Automotive customers** should be familiar with the bugfix solutions that are included in this update.
- The **data validity** capabilities have been expanded in the Web UI as conditional data validity is now available in the Globally Configured Unfolding Data Container, with a focus on improving central authorship and enhancing the user experience for business users through guided data entries.
- It is now possible to use **LOV Value IDs** as part of data container keys, offering enhanced flexibility and identification capabilities.

## Details

### Updated STEP Workbench user interface

STEP Workbench has been restyled to provide a modern and consistent user experience for administrators and users who work in the workbench. Aligning the workbench user interface with the Web UI styling enhances the user experience when working with the separate UIs. The new styling continues to provide the same functionality.



For more information, refer to the specific section of the Getting Started topic in the Getting Started documentation.

## New public methods for Scripting API and Extension API

Public API methods allow STEP developers to code validation in extensions and advanced JavaScript business rules. The following methods are now publicly available:

- Collections - get NodeCollectionHome, find a NodeCollection by ID, and find all Nodes in the collection via

```
NodeCollectionHome Manager.getNodeCollectionHome ()
```

```
NodeCollection NodeCollection.getNodeCollectionByID (String id)
```

```
Query<Node> NodeCollection.queryNodes ()
```

Accessing collections from JavaScript allows executing a business action on a selection of objects as a single operation, rather than handling individual transactions as typically performed in a bulk update. This approach can be useful when the operation requires collectively examining a group of objects before computing a result.

- Attributes and lists of values (LOVs) - access maximum length, maximum value, minimum value, and name via

```
getValidatorMaximumLength ()
```

```
getValidatorMaximumValue ()
```

```
getValidatorMinimumValue ()
```

### `getValidatorName ()`

By examining the validator type alongside its parameters, a business action can pre-validate a value before it assigns it to an attribute. This allows the business action to either transform the value or generate a user-friendly error message if the value is deemed invalid.

For more information, refer to the options in the Scripting API section or the Extension API section of the STEP API documentation accessible at [system]/sdk or from the system Start Page.

## **SaaS Self-Service UI improved user experience**

The SaaS Self-Service UI now includes a better overall user experience that aligns with the STEP Instrument UI styling. Among other enhancements, changes also include:

- Improved functionality for viewing, filtering, and editing configuration properties
- Multiple navigation improvements across the user interface
- Hotfix descriptions accessible in the upgrade image comparison screen
- Reduced loading time in multiple locations
- Updated User Guide contents

For more information, refer to the SaaS Self-Service UI in-build User Guide.

## **Elasticsearch version support update**

STEP now supports Elasticsearch version 8.12.1 and higher. Improvements made in this version will make it easier to maintain for future enhancements.

For more information, refer to the On-Premises Initial Setup for Elasticsearch topic in the System Setup documentation.

## **Elasticsearch event processor runs concurrent background processes**

The Elasticsearch event processor will now delegate the indexing to multiple Elasticsearch indexing background processes that run concurrently. Previously, the Elasticsearch event processor only processed one batch of nodes from start to finish at a time. Additionally, the Elasticsearch event processor now polls for new events every 10 seconds which is a decrease from 1 minute. These changes significantly decrease the amount of time it takes to perform an initial index and a full reindex for an Elasticsearch configuration.

To get the most out of this improvement to the faceted search solution, it is recommended to use the 'One Queue' background process execution mechanism which was available with STEP 11.0. For more information, refer to the BG Processes Execution Management topic in the System Setup documentation.

## Product MDM for Automotive

While no new features were added to the Automotive solution for 2024.1, customers should review the bugfix solutions committed to this update: Miscellaneous Bugfixes.

Automotive customers should always use the latest Automotive component compatible with the installed baseline. Once the Automotive component is installed on a system, the component and the STEP baseline should be prepared / updated at the same time going forward.

For SaaS environments, updates can be done in the SaaS Self-Service UI or (if not available) by raising a request with Stibo Systems Support. More information on the update process in the SaaS Self-Service UI can be found in the Upgrade Environment section in the in-built User Guide.

For on-prem systems, the SPOT `--upgrade` command should be used to find compatible components that can be added at the same time as the baseline patch (i.e., `--upgrade=a11`). Refer to the SPOT Program topic of the System Administration Guide found in Downloadable Documentation. For assistance, contact Stibo Systems Technical Services.

## Conditional data validity for Globally Configured Unfolding Data Container

With this update, the capability to add the data validity business logic in the Globally Configured Unfolding Data Container has been implemented. Now, adding conditionally read-only, conditionally mandatory, and conditionally hidden fields are expanded to encompass input fields located on the Globally Configured Unfolding Data Container. Additionally, the Data Issues Report now allows displaying customized warning and error messages related to the affected fields in the data container. The functionality has been extended to allow marking whole data container instances and data container types as mandatory, read-only, or hidden.

This initiative addresses challenges faced by business users, such as dealing with missing or irrelevant data, or unintentional modifications to read-only data, thereby reducing data entry errors and facilitating fast onboarding and data enrichment processes.

For more information, refer to the Data Validation in Web UI topic in the Web User Interfaces documentation and the Data Validation Binds topic in the Resource Materials online help.

## LOV Value IDs in data container keys

This update enables users to utilize LOV Value IDs when creating data container keys. This means that if an attribute has an LOV Value ID, it can be used as a data container key definition. For example, it is common to use a 'Line of Business' LOV attribute where the LOV Value ID uniquely identifies the line of business.

For more information, refer to the Data Container Keys topic in the System Setup documentation.

# Web UI Enhancements and Instrument Developments

## Summary

The following enhancements and changes have been made to as part of the 2024.1 update:

- A new 'Label' field gives admins the option to **customize the name** of Globally Configured Multi Edit Data Containers in the Web UI.
- Web UI admins can now make a **default task assignment** for the Status Selector and Task components.
- Development continues to expand the usability of the **Instrument User Interface**. Information regarding how to access Instrument Documentation is outlined below.
- In the Web UI, users can now view the **historical data** for the Globally Configured Unfolding Data Container and the Globally Configured Reference components and track how the values of the components have changed over time.
- **User feedback** in workflows has been improved as input fields with missing mandatory data are highlighted in the Web UI.

## Details

### New 'Label' field for Globally Configured Multi Edit Data Containers

The Web UI designer now has a new label parameter for Globally Configured Multi Edit Data Container. Configuration properties for the Multi Edit Table View in the Data Container Representation allows admin users to define specific custom names for data containers using the new 'Label' field. If no label is defined, the name of the data container will display by default. The new label field allows for creation of more specific data container names in the Web UI.

For more information, refer to Globally Configured Multi Edit Data Container topic in the Web User Interfaces documentation.

### New default 'Task Mode'

The Task component of the Global Navigation Panel in the Web UI designer now has a 'Task Mode' section that allows an admin user to configure the default task mode and which task mode icons will display ('Show All', 'Show Group', and/or 'Show User'). A default task mode option is now also available for both Status Selector Homepage Widget and Status Selector components. The default task mode is set to 'Show all items assigned to me or any group I am a member of' for backward compatibility. This new default task mode allows for a more tailored user experience.

For more information, refer to Global Navigation Panel, Status Selector in the Global Navigation Panel, Status Selector Homepage Widget topics in the Web User Interfaces documentation.



## Instrument advancements

As Instrument expands to accommodate more complex use cases, the following advancements have been made for 2024.1:

- References are now easier to view and manage in Instrument.
- Support for entities in the Browse perspective has been added.
- Support for data containers has been expanded.
- Search cards can now be configured to display attributes via the Customize toolbar button.
- Preset configurations defined by an admin are default for user groups in work areas and perspectives.

**Note:** Details for the summary bullets above, as well as Instrument online help, are available via a separate STEP Instrument Documentation link that is accessed from your system's Start Page, or go directly to the documentation using this URL: [your system URL]/help/doc/instrument/Content/Homepage.html


A new Instrument User Interface topic in the STEP Documentation tells users how to access STEP Instrument Documentation.

## Value history for Globally Configured Unfolding Data Container

The capability to display historical information on a Node Details screen in the Web UI has been added to the Globally Configured Unfolding Data Container and to the Globally Configured Reference components. This enables users to view, for example, when a value was changed and who made the change.

When the feature is configured, users can hover over the title of an attribute or reference to display a history icon for that attribute or reference. Clicking on the icon opens a view displaying historical details, including Revision, Edited on (date / time), Edited by, and the corresponding value of the attribute or reference.

**Organization Details**

\* Legal Name  

Value history

Revision	Edited on	Edited by	Value
0.1-0.2	2023-08-16 13:47:58	stepsys	

For more information about value history, refer to the Global Reference Representations topic and the Globally Configured Unfolding Data Container View topic, both in the Web User Interfaces documentation.

## **Improved user feedback in workflows**

Enhancements have been made to improve the visualization in the Web UI of mandatory attributes and references in workflows. This improvement aims to streamline user feedback, making it easier for business users to identify which input fields require mandatory information.

When attributes and references have been configured as mandatory on workflow transitions or through a Mandatory bind, input fields with missing mandatory data will be highlighted in the Web UI. This feature enables users to easily identify attributes and references that require values when attempting to transition in a workflow. Additionally, if the transition is prevented, mandatory messages will be displayed to provide clear guidance.

For details on configuring mandatory attributes and references on workflow transitions, refer to the Mandatory Attributes and References in Workflows topic in the Workflows documentation.

# New Machine Learning Matcher for SaaS

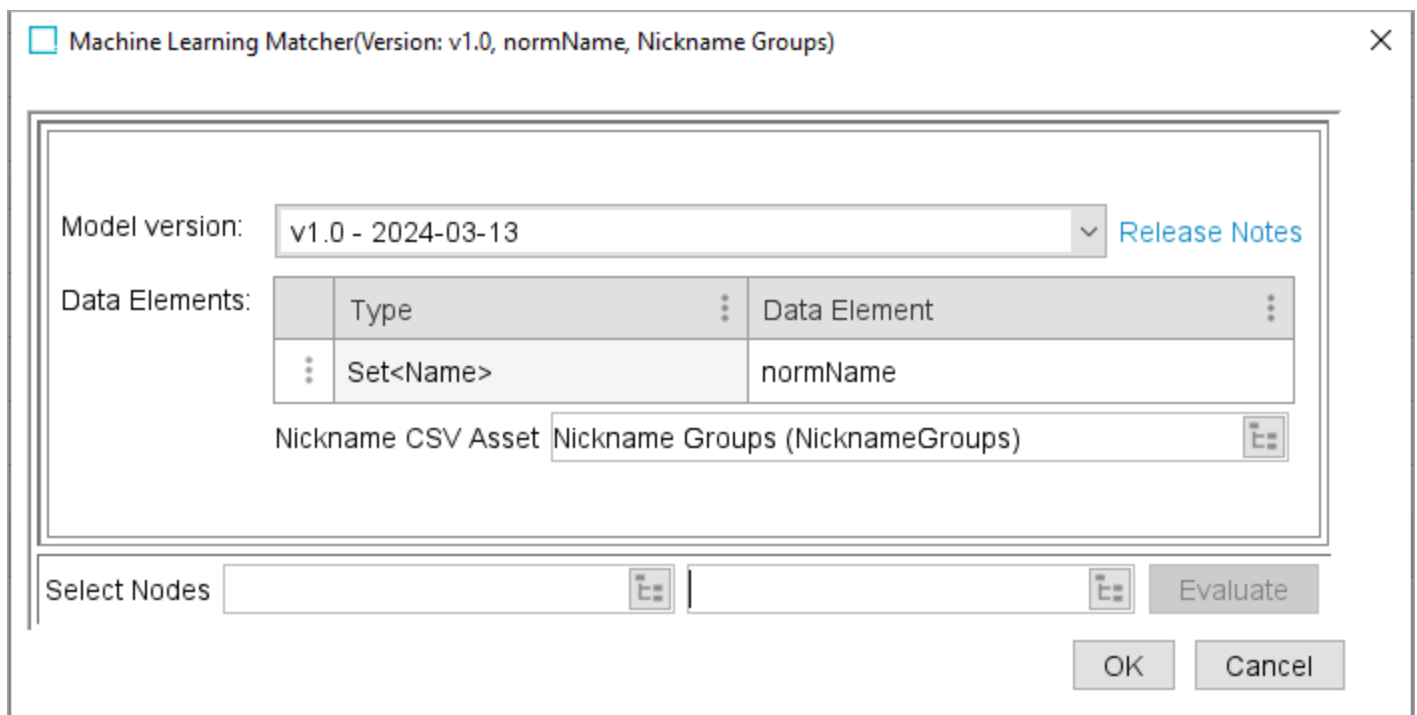
## Summary

Within the Customer MDM solution, a new Machine Learning Matcher has been created for STEP SaaS environments which enhances the capability to establish accurate matching algorithms by providing a pre-trained machine learning model for comparing person names.

## Details

With the 2024.1 update, the matching setup has been simplified exclusively for STEP SaaS environments as Stibo Systems introduces the first Machine Learning Matcher which enhances the capability to establish accurate matching algorithms more quickly.

The Machine Learning Matcher improves the ability to create accurate matching algorithms by providing a pre-trained machine learning model designed for comparing person names. Additionally, the Machine Learning Matcher for person names supports groups of nicknames, further improving the accuracy of the scores and simplifying the process of defining the nickname aliases.



Machine Learning Matcher (Version: v1.0, normName, Nickname Groups)

Model version: v1.0 - 2024-03-13 [Release Notes](#)

Type	Data Element
Set<Name>	normName

Nickname CSV Asset: Nickname Groups (NicknameGroups)

Select Nodes: [ ] | [ ] Evaluate

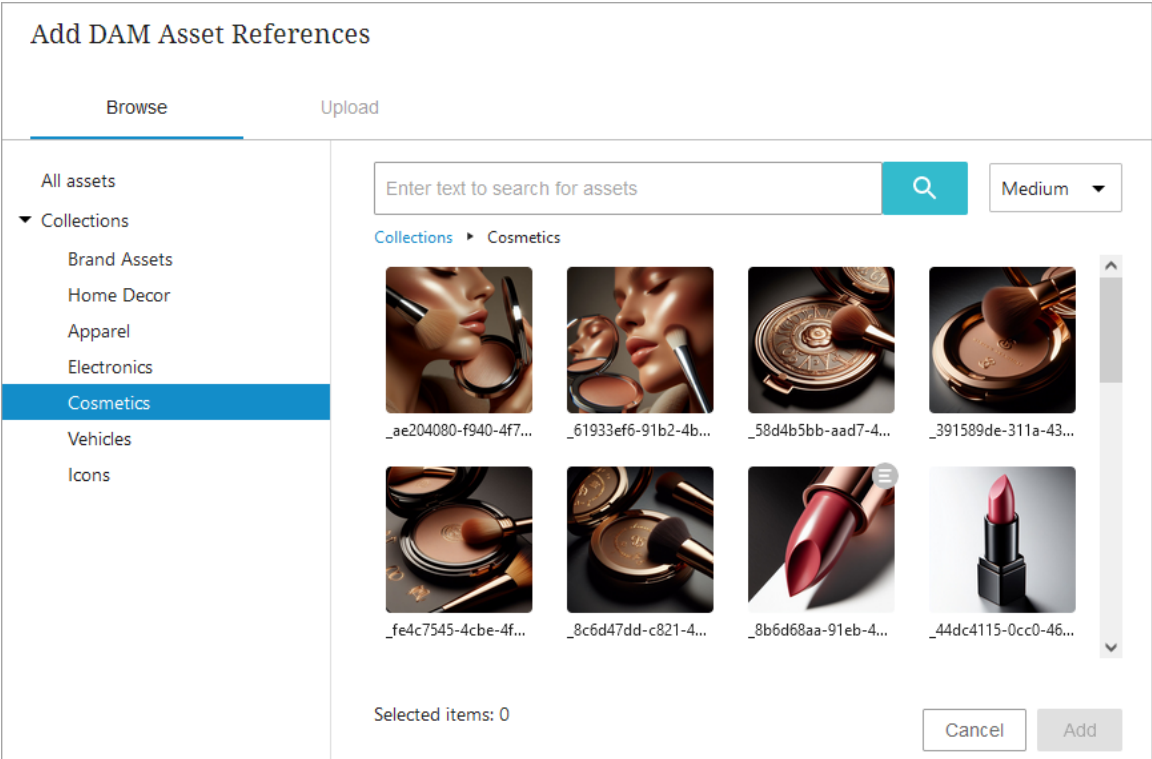
OK Cancel

Subsequent model version updates will expand support to include additional individual and organizational party data elements, such as addresses, emails, and phone numbers. The pre-trained machine learning models provide substantially more accurate scores than the existing matchers that are based on static algorithms.

For more information, refer to the [Matcher: Machine Learning Matcher](#) topic within the Matching, Linking, and Merging documentation.

# DemoUp Cliplister DAM Integration

A new External DAM Adapter is available with the 2024.1 update that is enabled using DemoUp Cliplister, a third-party DAM tool. This integration, optimized between DemoUp Cliplister and STEP, allows users to search and browse assets in the external DAM in real-time. Additionally, users can link assets stored in DemoUp Cliplister to object information in STEP. The functionality provided by this DAM integration can be extended to encompass additional third-party DAM offerings, dependent on the API and a custom extension.



When either the Referenced Asset Representation component or References component is configured on a Node Editor, the connection between the STEP Web UI and DemoUp Cliplister enables users to:

- Perform real-time searches of assets in DemoUp Cliplister to link to objects in STEP.
- Browse through all the Cliplister DAM assets or specific collections or channels built in the DemoUp Cliplister DAM to find the desired asset while in the Web UI.
- Create asset references from the DemoUp Cliplister DAM to product information in the Web UI.
- Upload assets from your personal machine to the DemoUp Cliplister DAM which simultaneously creates an asset in STEP that references the Cliplister asset.

Also featured with this integration is a column that displays a selected asset's metadata. When the information button (ⓘ) is clicked on the asset thumbnail, a column displays to the right of the primary asset window that lists the asset's metadata from DemoUp Cliplister. Another button in the column (🖼️) enables a full-sized asset preview.

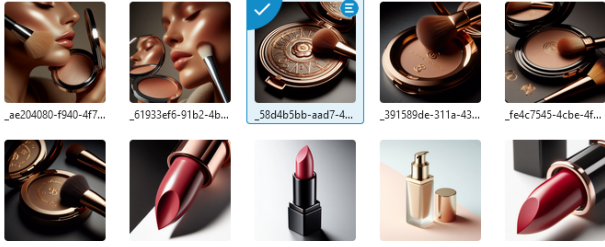
**Add DAM Asset References**

Browse Upload

All assets  
 Collections  
 Brand Assets  
 Home Decor  
 Apparel  
 Electronics  
**Cosmetics**  
 Vehicles  
 Icons

Enter text to search for assets  Medium

Collections > Cosmetics



Selected items: 1

Info icon | \_58d4b5bb-aad7-4728-80da-f... X

FileName  
\_58d4b5bb-aad7-4728-80da-f5c3c7936a97.jpg

Gema  
false

CreateUserId  
190300

CreateTimeStamp  
2024-02-22T10:40:28.403Z

Rating  
99

Fps  
0

Md5Source  
62f605e4bb1ffe484f02b17dob434c85

Cancel Add

For more information on configuring this connection and using it in the Web UI, refer to the Integration with Cliplister DAM topic in the Web User Interfaces documentation.

# Data Exchange Enhancements and Changes

## Summary

The following enhancements to STEP's data exchange functionality have been made as part of the 2024.1 update. These changes are outlined below and described in the Details section that follows:

- Update to **PDX Onboarding Channel Configurator** adds Market Dimension and Supplier Contexts. Default Supplier Contexts and Asset Reference Metadata Group are introduced. Some parameters are removed.
- **PDX Onboarding via Product MDM** updates benefit PDX onboarding and reduce limitations around PDX functionality such as list view attributes, product families, and searchable attributes.
- **Encryption of data and assets** sent from STEP to PDX is possible via Amazon Web Services (AWS) Key Management Service (KMS). This improvement provides a stronger authentication and encryption option for integrations with PDX.
- **Kafka message key and headers metadata** can now be generated via a business function selected in the Kafka Delivery method. This improvement provides better control for ensuring that messages for specific objects end up in the same partition every time.
- The STEPXML, CSV, and Excel formats now allow the exporting of empty calculated attributes. This improvement provides a consistent output of **existing, absent, and deleted values** for valid attributes on an object. Additionally, the Advanced STEPXML format now allows an OIEP to output change flags on deleted data and allows empty values and deleted data to be output simultaneously.
- **New context specific replacement rules** for STEPXML imports allow for replacement of values, cross references, classification references, and product references specific to selected contexts. These improvements allow users to make replacements in one or more specified contexts, without changing existing functionality related to data replacement upon import.
- **MongoDB support** for the outbound integration endpoint (OIEP) delivery method is updated to include version 7.0. Versions 3.6 and earlier are no longer supported.
- Enhancements to the **ECLASS Advanced Editor Screen** offer streamlined data filtering, mandatory field indication, block naming, block name editing, and read-only mode for improved usability.
- Change codes will now be imported into a metadata attribute on the attribute-classification link using the **ETIM Taxonomy Importer**.

## Details

### PDX Onboarding Channel Configurator UI extension

Updates to the PDX Onboarding Channel Configurator introduces new parameters to enhance configuration options:

- **Market Dimension:** This optional parameter within the Channel Properties tab allows users to specify the STEP dimension that represents market data for their STEP installation.
- **Supplier Contexts:** This optional parameter within the Supplier Classification tab, when configured with an attribute, is used to identify the contexts that a given supplier should maintain. The values are used to drive the markets and languages that the supplier will be exposed to in the PDX application. It is a prerequisite for this functionality that the Market Dimension parameter on the Channel Properties tab is configured.
- **Default Supplier Contexts:** This optional parameter within the Supplier Classification tab contains default primarily supplier-facing contexts, and is used when no supplier-specific setup is configured. These contexts determine the markets and languages visible to the supplier by default within the PDX application. It is a prerequisite for this functionality that the Market Dimension parameter on the Channel Properties tab is configured.
- **Asset Reference Metadata Group:** This optional parameter within the Supplier Data Definition tab can be configured with an attribute group comprising all vendor-facing asset reference metadata. When populated, all assets in PDX are treated as composites. Each composite includes an asset attribute and attributes from this attribute group add additional columns to the composite.

Further, the following parameters are removed from the PDX Onboarding Channel Configurator to enhance configuration options:

- Location Reference Type
- Primary Location Reference Type
- Location Key

After publishing the PDX Onboarding Channel Configurators, these fields are no longer included in the channel configuration XML.

For more information, refer to the Supplier Data Definition Tab, Channel Properties Tab, and Supplier Classification Tab topics in the Data Integration documentation.

## **PDX Onboarding via Product MDM**

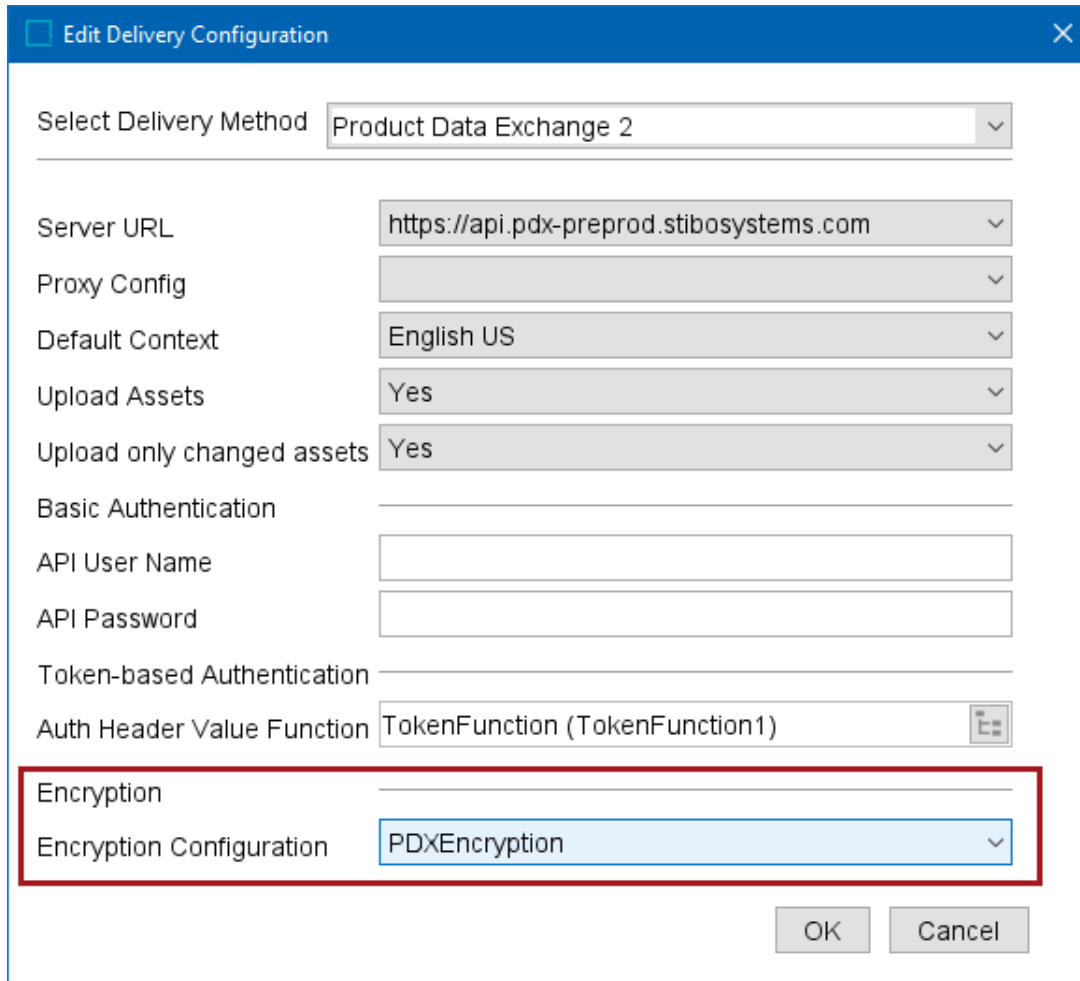
Enhanced capabilities for the 2024.1 update of Configured Product MDM Channels now include the following:

- **Control over the channel-specific List View attributes:** It is now possible to configure, from STEP, the setup of attributes that can be selected as List View attributes. Previously, these attributes could only be chosen between a few hardcoded fields.
- **Support, in PDX, of the STEP 'Product Family' object (a two-level Parent/Child structure):** This will allow, from PDX, to onboard a Product Family and, from STEP, to push a Product Family structure or maintenance.
- **Control over the channel-specific search attributes:** It is now possible to configure, from STEP, the setup of attributes that can be used in the channel search. Previously, searching or filtering products in a channel-specific category in PDX was limited to a few fixed attributes.

## Encryption of data and assets from STEP to PDX

Integration with Product Data Exchange (PDX) now allows optional encryption of data and/or assets and in-transit using Amazon Web Services (AWS) Key Management Service (KMS).

- For data, an outbound integration endpoint (OIEP) using the 'Product Data Exchange 2' delivery method now includes a new 'Encryption Configuration' parameter.



The screenshot shows a dialog box titled "Edit Delivery Configuration" with a close button (X) in the top right corner. The dialog contains several configuration fields:

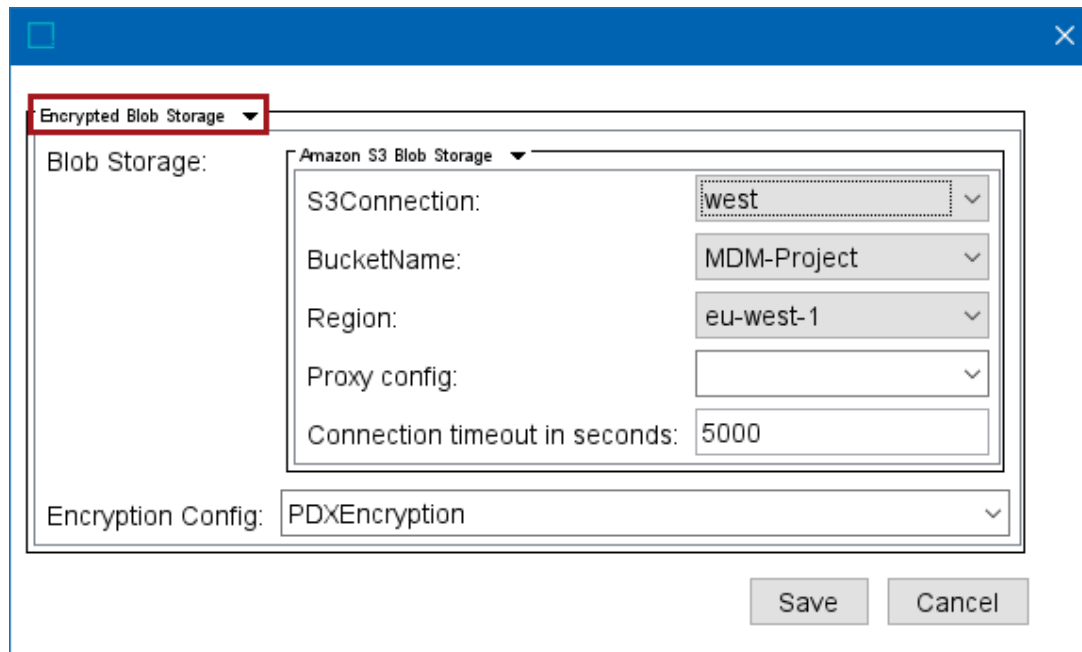
- Select Delivery Method:** Product Data Exchange 2 (dropdown)
- Server URL:** https://api.pdx-preprod.stibosystems.com (dropdown)
- Proxy Config:** (dropdown)
- Default Context:** English US (dropdown)
- Upload Assets:** Yes (dropdown)
- Upload only changed assets:** Yes (dropdown)
- Basic Authentication:** (checkbox)
- API User Name:** (text input)
- API Password:** (text input)
- Token-based Authentication:** (checkbox)
- Auth Header Value Function:** TokenFunction (TokenFunction1) (dropdown with a help icon)
- Encryption:** (checkbox)
- Encryption Configuration:** PDXEncryption (dropdown, highlighted with a red box)

At the bottom right of the dialog are "OK" and "Cancel" buttons.

- For assets, the new Encrypted Blob Storage option in a gateway integration endpoint (GIEP) works with an



event processor using the Asset Publisher processor.



Encryption setup for both data and assets is managed by several new sharedconfig.properties entries which define options for dropdown selections in the OIEP and GIEP.

For environments using PDX, configuration is required on the PDX system to implement AWS for asset delivery and/or AWS encryption. Contact Stibo Systems for information.

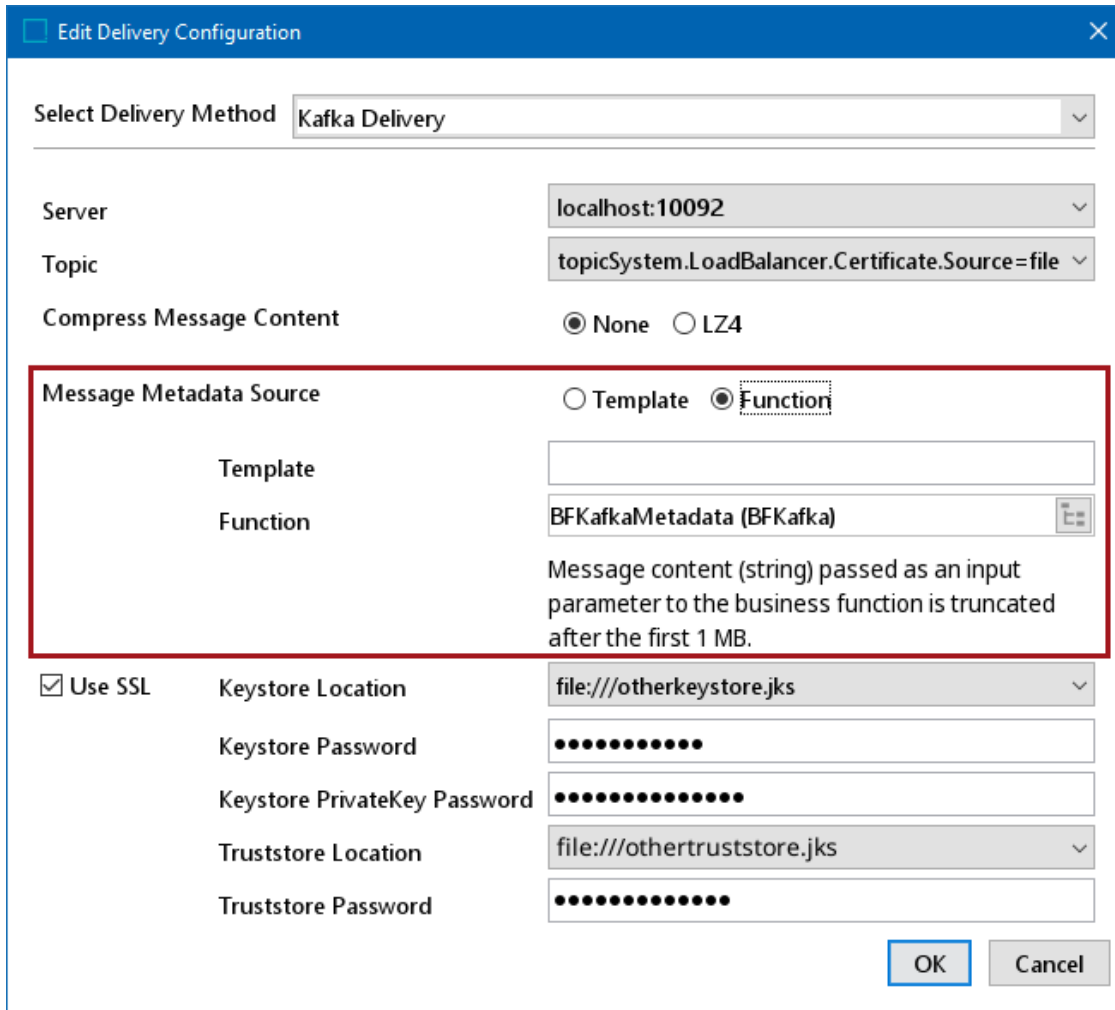
For more information and configuration details, refer to the Product Data Exchange 2 Delivery Method topic, the Configuring a Gateway Integration Endpoint - Encrypted Blob Storage topic, both in the Data Exchange documentation, and the Asset Publisher topic in the Digital Assets documentation.

## Kafka message key and headers metadata

For Kafka deliveries, users now have better control of message keys for each message. Users can also define header values for messages which may be required by downstream systems. This allows users to better ensure that messages for a product ends up in the same partition every time. The new 'Message Metadata Source' parameter allows using a template or a business function (with 'String' as an 'Input Parameter' and 'Map<String,String>' as a 'Return Type') to provide the metadata based on content parsed from the output message. The delivery method delivers the payload to Kafka and the same payload (string) and is passed to the selected business function and is truncated at 1MB. The business function is designed to work with human-readable text files, such as XML, JSON, or CSV; binary files (such as Excel) are not supported.

Alternately, the Template option relies on the message being generated with STEPXML passing through Generic STEPXML Splitter post-processor. Existing Kafka integrations that used the 'Kafka Message Key Template' are unchanged and the previously implemented template is now displayed in the 'Template' parameter.

Additionally, the Kafka delivery method using LZ4 compression no longer sets the Key as the OIEP ID when the Template is blank. Previously, this configuration inadvertently discarded messages that should have been processed when compression was enabled. If the OIEP ID is needed, users can include it in the Template field explicitly or leave it blank to not define a key.



**Edit Delivery Configuration**

Select Delivery Method: **Kafka Delivery**

Server: localhost:10092

Topic: topicSystem.LoadBalancer.Certificate.Source=file

Compress Message Content:  None  LZ4

**Message Metadata Source**

Template  **Function**

Template:

Function: **BFKafkaMetadata (BFKafka)**

Message content (string) passed as an input parameter to the business function is truncated after the first 1 MB.

Use SSL

Keystore Location: file:///otherkeystore.jks

Keystore Password:

Keystore PrivateKey Password:

Truststore Location: file:///othertruststore.jks

Truststore Password:

**OK** **Cancel**

For more information, refer to the Kafka Delivery Method topic in the Data Exchange documentation.

## Exporting existing, absent, and deleted values

Previously, when included, calculated attributes were only exported if a value existed. Now, when the empty attributes and the calculated attribute values options are both selected, even empty calculated attributes can be exported using STEPXML, Excel, and CSV formats. This allows for a more complete picture of all values on an object, which can be used to verify the same object in a downstream system.

Also with this update, in the Advanced STEPXML format, the previous restriction of setting both ExportValidAndAbsent and ExportDeletedData to true is removed. This allows valid and absent and deleted data to be output at the same time. As a result, change flags are included for deleted data while also outputting all valid attributes and references.

For more information, refer to the Advanced STEPXML Format topic, the CSV Format topic, the Excel Format topic, the Export Manager topic, or the STEPXML Outbound Parameters topic, all in the Data Exchange documentation.

## Context-specific replacement rules for STEPXML imports

Replacement rules in STEPXML imports are used to update data in STEP objects to match the data in the import file, including deletion of data that is not present in the import file. Now, adding a ContextID within a <ReplacementRule> tag allows the user to define which context(s) should have the data replaced with the contents of the import file. When one or more context-specific replacement rules are defined, only data in those contexts is impacted by replacements. Existing functionality is not changed for replacing data in all contexts.

The following data is available for replacement by context:

- ReplaceValues - products, classifications, entities, assets
- ReplaceCrossReferences - products, classifications, entities, assets
- ReplaceClassificationReferences - products
- ReplaceProductReferences - classifications

For more information, refer to the ReplacementRules Tag in STEPXML topic in the Data Exchange documentation.

## MongoDB supported versions

Support for MongoDB in the delivery method on an outbound integration endpoint (OIEP) now includes the following versions:

- mongo:4.4.28
- mongo:5.0.24
- mongo:6.0.13
- mongo:7.0.5

Versions 3.6 and earlier are no longer supported.

For more information, refer to the Mongo Delivery Method topic in the Data Exchange documentation.

## Enhancements to the ECLASS Advanced Editor Screen

The ECLASS Advanced Editor Screen has undergone the following enhancements and updates:

- Data filtering: The new filtering mechanism is implemented that allows users to view only the specific relevant information of the vast ECLASS Advanced dataset. The new dropdown (shown below) in the screen allows users to select a filter. With a filter selected, users now only sees relevant portions of ECLASS Advanced data for the selected product. This enhancement ensures that users can maintain focus on the required data without losing the context while contributing to the data. Administrators define the content of the filters in the workbench.

### Node Details

Primary Product Hierarchy > Products > Lu Te 05

Title    ECLASS Advanced Editor    Eclass Advance Business Rule

---

Link to ECLASS Advanced
 Duplicate
 Remove link
 Approve ECLASS

Version: ECLASS 10.0.1    Filter: CAx Basic limited    ← 27-01-01-02 Synchronous generator (> 100 MVA)

[Collapse all sections](#)

▾ Synchronous generator (> 100 MVA)

> **B** Mechanical and electrical construction (s)

Brand	<input type="text"/>
Application standards	<input type="text"/>
certificate/approval	<input type="text"/>

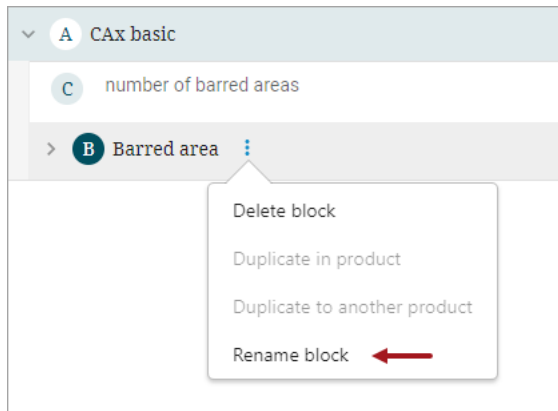
> **A** CAx basic

---

Save    Reset

- Mandatory field indication: If the filter definitions contain instructions to define any of the attributes to be mandatory, then such attributes will be highlighted in the ECLASS Advanced Editor screen. This allows customers to designate mandatory properties. These fields will now feature a red asterisk as a visual indicator that they require input.
- LOV Values: LOVs for an attribute displayed in the ECLASS Advanced Editor screen are now restricted to those defined in the filter templates. This prevents users from selecting irrelevant values.
- Name blocks on-the-go: Now users can name new blocks while creating them in the screen.

- Edit block names: Users can rename existing blocks directly within the screen.



- Read-Only mode: Web UI administrators now can configure the ECLASS Advanced Editor Screen to be in 'read-only' mode. This feature ensures that end users cannot edit ECLASS Advanced data via the ECLASS Advanced Editor Screen. To activate this functionality, a 'Read only' check box is added for the ECLASS Advanced Editor Screen component in the Web UI designer.

For more information, refer to the ECLASS Advanced Editor Screen topic in the Web User Interfaces documentation.

## ETIM Taxonomy Importer enhancements

The ETIM Taxonomy Importer has been updated to ensure that change codes will be imported into a metadata attribute on the attribute-classification link, rather than directly on the attribute. Previously, change code information was imported into a metadata attribute on the attribute itself. This enhancement means that ETIM customers can now view if an attribute has been deprecated in the context of a given classification.

For general information regarding ETIM Taxonomy Importer, refer to the ETIM IXF Format topic in the Data Exchange documentation.

# Platform and Software Support Changes

This section lists current and future planned changes to platform and software support. The complete list of platform and software support is available in the 2024.1 Platform and Software Support section of the System Update and Patch Notes documentation within online help.

The changes in platform and software support from version 2023.4 to 2024.1 are listed below. **Customer action may be required.**

## Current Updates

Support has been added for:

- Adobe InDesign® 2024
- RHEL / Oracle Linux 8.9 support for the STEP database, application, and asset push file servers

## Future Updates and End-of-Life (EOL) Notifications

The support for the items below will begin / end as indicated.

### Server and client support

- Adobe InDesign® 2022 support will end with the STEP 2024.2 update.
- Red Hat Enterprise Linux and Oracle Linux 7.9 will be supported for existing customers until officially desupported on June 30, 2024.
- STEP 10.2 support ends May 1, 2024. Refer to the [Baseline EOL](#) section below.
- macOS 12 (Monterey) support ends with the STEP 2024.4 update.

### Update: New on-premises deployment architecture

**Important:** In order to allow customers more time for preparations, Stibo Systems is postponing the introduction of the new on-premises architecture by three months.

One of Stibo Systems' strategic focuses is on delivering a superior SaaS service, which leads to changes in our overall architecture to introduce more and more containerized microservices. These changes cannot be deployed on-premises or in a private cloud without changes to the deployment architecture. As first published in the 2023.3 update notes, to allow on-premises customers to continue to update STEP, starting with the 2024.3 update (and not for STEP 2024.2, as originally communicated), these customers need to change the way that Stibo Systems' software is deployed on-premises so it is aligned with how Stibo Systems' deploys in SaaS. Updates to 2024.3 and subsequent updates will require a new deployment architecture where the current application server architecture is replaced by a containerized architecture—just as in SaaS. This in turn requires extra hardware due to an overhead in running the SaaS architecture on-premises. Application operations like starting and stopping the application will be similar in complexity to today—but different.

While the new architecture will be available with the 2024.3 update, on-premises customers are encouraged to update to 2024.4, when available and if possible, since it is supported for a longer time period (24 months) than the 12 months that 2024.3 is supported. Refer to the STEP Update and End-of-Life Information topic for more information about update target dates and support end dates for various versions of STEP.

The database deployment architecture will be exactly the same, so database administration along with backup / restore will remain the same. Any deployment of InDesign and Elasticsearch will also remain the same. Only the application server architecture is changed. On-premises and private cloud customers will receive more detailed documentation separately.

This notification is also included in its entirety in the 2024.1 Update Guide.

## Baseline EOL

Below is a table outlining the end-of-life schedule for the STEP updates shown:

Update	Update Available to Customers	EOL for systems not enrolled in continuous updates	EOL for systems enrolled in continuous updates
10.2	June 8, 2021	May 1, 2024	N/A
10.3	December 8, 2021	November 1, 2024	N/A
11.0	June 8, 2022	June 8, 2025	N/A
11.1	November 30, 2022	November 30, 2025	N/A
11.2	June 7, 2023	March 7, 2026	N/A
2023.3	September 27, 2023	September 30, 2024	N/A
2023.4	December 13, 2023	June 13, 2026	N/A
2024.1	March 27, 2024	March 31, 2025	September 30, 2024

Refer to the updated STEP Update and End-of-Life Information topic for more information about quarterly updates and support end dates.

Customers should update as soon as possible to the latest version of the Stibo Systems Enterprise Platform (STEP). Contact Stibo Systems Support if you have questions and/or to receive help and guidance on how to update to a supported version.

Software errors reported for the versions shown above may be rejected after the listed effective dates. Application support issues in progress for the updates being desupported will be closed on the desupport date. It is not possible to extend the support services for desupported versions.



# Miscellaneous Bugfixes

Bugfixes included in the 2024.1 update are summarized below:

## ■ PLM: Fix for adding ingredients and extended Compare View functionality

### BPs and CPs: Fix for adding ingredients

A problem was identified when a supplier was trying to add ingredients under a recipe and the 'Add Ingredient' button in the action dialog was unresponsive. The inability to save ingredients was due to an exception being thrown because the user was a member of two supplier groups and there was ambiguity around which supplier to link the ingredients to. This is now fixed. The sample that the ingredient is being added to is linked to a supplier and that supplier is used.

### Extension of Compare View

Previously, the PLM solution allowed for comparing samples belonging to a single design specification (i.e., the samples had a common parent). This was done on a screen that showed details for the design specification with a tab for comparing samples. This solution did not work for comparing unrelated samples that lacked a common parent. For this scenario, a new details screen (Compare Ingredients Screen) is now available.

To use this functionality, existing PLM users need to:

1. Create a new Compare Ingredients Screen in Web UI.
2. Configure a mapping for the 'Compare BOMs Condition' that uses the screen configured in the prior step.
3. In the Node List set up to display the samples, add or configure the 'Compare BOMs Action' component, and enable the 'Allow Unrelated Samples' parameter. This parameter allows for the comparing of samples from different design specifications.

When comparing unrelated samples, the Specified Ingredients Panel will not display when using Compare View.

For general information regarding Web UI setup and configuration, refer to the Web UI Getting Started section of the Web User Interfaces documentation.

## ■ Bugfixes and enhancements in the BMEcat solution

These enhancements were made as solutions to customer and internal bugfix tickets:

- Running the BMEcat Model easy setup action now creates description attribute ISO-639-2 (ID = stibo\_ISO-639-2), which is valid for both Entity type and Entity Reference type. This attribute stores the Language ISO Code for Language Dimension Points. If this attribute already exists in the system, then running the setup action adds it to the BMEcat Attributes group, making it visible in the Language Dimension Point.

- The exported file now includes <LANGUAGE> tags generated based on the value populated in the ISO-639-2 attribute for each exported context's selected language. If no value is present in this attribute for any exported context, the <LANGUAGE> tag is generated based on the selected Locale (if available). In the BGP logs for each exported context, a message indicates the source of the <LANGUAGE> tag value, whether it originates from the ISO-639-2 attribute or the locale.
- The OIEP allows saving the BMEcat export Output Template without having to select any language (which is not allowed in standard BMEcat export). However, upon invoking such OIEPs, the BGP terminates with an error indicating that mandatory contexts and the default context have not been selected, thus halting the export process.
- Language field generated based on Sample field is no longer taken into account in <LANGUAGE> tags in the output file if there is any context specified. However, if a Language parameter exists and has a value in it, then the BGP warns the user that this value will be overwritten by contexts selected in 'Export Context for selected contexts' field. The error message states: 'Found a <LANGUAGE> tag specified in the sample. It will be overwritten by language dimensions selected in Cross Context Chooser field.'
- BMEcat exporter is updated to correctly export all the block and attribute names based on the default context selected in the 'Select default context' field. Previously, some block and attribute names were exported based on the context selected in the workbench.

Following are the hotfixes available for the above mentioned issues:

#### **Hotfix recipes compatible with STEP 2023.3 (11.3) + eclass-advanced-7.0.11:**

- `to:hotfix/676/issue-676453-HOTFIX-7036.spr`
- `to:hotfix/677/issue-677280-HOTFIX-7046.spr`
- `to:hotfix/684/issue-684862-HOTFIX-7137.spr`
- `to:hotfix/684/issue-684950-HOTFIX-7142.spr`

#### **Hotfix recipes compatible with STEP 2023.3 (11.3) + bmeat-7.0.53:**

- `to:hotfix/676/issue-676453-HOTFIX-7036.spr`
- `to:hotfix/677/issue-677270-HOTFIX-7045.spr`
- `to:hotfix/684/issue-684862-HOTFIX-7137.spr`

#### **Hotfix recipes compatible with STEP 2023.4 + eclass-advanced-7.0.12:**

- `to:hotfix/677/issue-677297-HOTFIX-7047.spr`
- `to:hotfix/678/issue-678136-HOTFIX-7060.spr`
- `to:hotfix/684/issue-684862-HOTFIX-7137.spr`
- `to:hotfix/684/issue-684950-HOTFIX-7142.spr`

#### **Hotfix recipes compatible with STEP 2023.4 + bmeat-7.0.54:**

- [to:hotfix/677/issue-677297-HOTFIX-7047.spr](#)
- [to:hotfix/677/issue-677502-HOTFIX-7050.spr](#)
- [to:hotfix/684/issue-684862-HOTFIX-7137.spr](#)

- Addressed an issue where exporting large BMEcat files encountered errors. Current implementation uses streams ensuring smooth export operations regardless of file size. Users can now export large BMEcat files without encountering performance issues or errors.

For the BMEcat 2005 version, **Hotfix recipes compatible with STEP 2023.3 (11.3) + bmecat-7.0.53 and STEP 2023.4 + bmecat-7.0.54:**

- [to:hotfix/693/issue-693598-HOTFIX-7241.spr](#)

For the BMEcat 2005.1 version, **Hotfix recipes compatible with STEP 2023.3 (11.3) + eclass-advanced-7.0.11 and STEP 2023.4 + eclass-advanced-7.0.12:**

- [to:hotfix/693/issue-693731-HOTFIX-7242.spr](#)

For general information regarding BMEcat export and configuration, refer to the Exporting in BMEcat 2005.1 Format and BMEcat 2005 Format topics of the Data Exchange documentation.

## ■ Bugfixes and enhancements in Industry Standard Mapper solution

These enhancements were made as solutions to customer and internal bugfix tickets:

- Removal of ECLASS Mapper Action button

The ECLASS Mapper Action button in the Web UI has been deprecated and removed from the system. This action component, previously utilized as a 'stop gap' measure, is no longer required and has been permanently discontinued.

- Parameter Label Correction: Industry Standard Mapping Creator screen component

Within the designer mode of the Industry Standard Mapping Creator component, the parameter label 'Mapper Configuration Root' has been updated to correctly reflect its intended meaning. The label now reads as Mapper Configuration Root for improved clarity. For information about this parameter, refer to the Configuring Industry Standard Mapping Creator Screen topic of the Data Onboarding documentation.

- Updated Select Workflow Parameter in the ECLASS Classification Mapping Plugin

Previously, the Select Workflow parameter within the Settings tab of the ECLASS Classification Mapping plugin was displayed with an asterisk, indicating it was a mandatory field. However, this requirement has been removed and the asterisk has been eliminated. For information about this parameter, refer to the ECLASS Classification Mapping Plugin topic of the Data Onboarding documentation.

- Attribute Classification Mapping plugin deprecation

The Attribute Classification Mapping plugin, which was developed for the Industry Standard Mapper solution in the Web UI, has been deprecated and removed from the system.

## ■ Bugfixes and enhancements in PMDM for Automotive solution

These enhancements were made as solutions to customer and internal bugfix tickets:

### ■ Addressed 'ConcurrentModificationException' Error in TecDoc Supplier Import

Users encountered a 'ConcurrentModificationException' error when importing TecDoc supplier data files. This issue arose due to importing multiple supplier files simultaneously, wherein the code had limitations in handling dependencies. The updated code now effectively handles dependencies, mitigating the 'ConcurrentModificationException' error.

### ■ Automotive LOV Cache Pool Issue Resolution

An error was generated in the situation where the automotive LOV Cache Pool was entering an infinite loop, leading to a stack overflow condition. This was linked to a TecDoc Supplier file import, where the 'java.lang.StackOverflowError' was encountered during the conversion process. The update ensures the proper functioning of the automotive LOV Cache Pool, preventing any occurrences of a stack overflow error due to infinite loops.

To address the issue, the following 'sharedconfig.properties' file has to be updated as shown below:

```
TecDoc.LOVPoolCacheSize=10000
```

The property sets the size of the LOV Value cache to be used by the TAF readers for the LOV Pool.

## ■ Changed ID pattern for identical Mapper Configuration setup entities

The Data Onboarding solution has been updated to allow users to create multiple identical Mapper Configuration setup entities with the same source name and target name. Previously, this was not possible due to constraints in the ID generation pattern. As a result of this update, users can now create such entities with an ID pattern as follows: MP\_SourceName\_TargetName\_Suffix.

## ■ ISSUE-556263 - Fix for Status Selector Homepage Widget is missing i18n function

'Total' title was handled as a standard string and not able to be handled as a localizable value. When the user used a translation key value, it was not handled correctly. Now, the key is changed to a translated value.

## ■ ISSUE-586557 - Fix for Referenced Asset Representation Web UI component display assets error

Fixed problem: uploading multiple assets via the Referenced Asset Representation with Asset Import Configuration caused only the last uploaded asset thumbnail to be shown on a Web UI Node Editor before the user saved the result.

■ **ISSUE-626098 - Fix for Globally Configured Data Container - Read-only attributes view**

Globally Configured Data Container - updated Read-only attributes view to be rendered in top-right.

■ **ISSUE-645783 - Fix for errors in completing task (InDesign) after upgrade**

The STEP server is now able to retry writing a DTP document if an Optimistic Lock error occurs. The Optimistic Lock error may occur if several InDesign renderers are configured and more of the renderers are trying to write the DTP document to the same section at the same time.

■ **ISSUE-649501 - Fix for when collection refresh is not working for OIEP**

Fixed the refresh of collections when running a business rules-based outbound processing engine.

■ **ISSUE-654594 - Fix for finding names both with and without dimension dependencies**

The new health check plugin 'Invalid name' has been added. It can find and fix nodes with names that do not have the correct dimension dependencies according to the definition of the object type.

■ **ISSUE-657518 - Fix for when users get a data container error after an upgrade**

Fixed a NoSuchMethodException which displayed when accessing a Data Container Table or Popup editor in the Web UI Node Editor screen in STEP version 11.1-mp6. There is also a hotfix available for this solution that is applicable to step-11.1-mp4, 11.1-mp5, and 11.1-mp6

■ **ISSUE-658057 - Fix for an outbound export issue: Workflow does not export local business rules**

Fixed a problem when local business rules were not exported during the workflows export via Outbound Integration Endpoint.

■ **ISSUE-658148 - Fix for collection issues with suppression**

Fixed an issue to include suppressed references when searching for references with In-Memory.

■ **ISSUE-658939 - Fix for International Bank Account Numbers (IBAN) having the wrong date after a system upgrade to 11.1mp5**

When editing dates in data containers in the Web UI, the date would be stored incorrectly. This has been fixed. There is also a hotfix available for this solution that is applicable to step-11.1-mp4, 11.1-mp5, 11.1-mp6, step-11.2-mp2, 11.2-mp3, step-2023.3, and step 2023.4. The hotfix is included in step-2023.3-mp1 and 2023.4-mp1.

■ **ISSUE-659812 - Fix for copy from Excel sheet into STEP not working anymore**

The ability to flip the table while copying data from Excel, was removed. It allowed for the proper copying data from clipboard to Workbench. This is now fixed.

■ **ISSUE-660472 - Made In-Memory acceleration of hasAttributeLinkListOfVal**

When running Cassandra, the method `hasAttributeLinkListOfValuesFilters` was slow if there were millions of attribute links, since a PO was created for each. An In-Memory acceleration has been made to make this faster.

■ **ISSUE-661188 - Fix for the Remove Attribute Link button not working after certain operations in the Attribute Link Editor screen of the Web UI**

Remove Attribute Links toolbar action did not work when selecting more than 50 items with the 'Select All' action. This is now fixed.

■ **ISSUE-661263 - Fix for inability to import translation STEPXML**

Fixed a problem occurring when an attribute, present in the translation import XML but missing on a system where the translation import was initiated, was causing the exception during translation import when attempted to be created. In such cases, missing attributes should be skipped instead of being created.

■ **ISSUE-661332 - Fix for the STEP OAuth Component: REST API V2 bug when using LDAP config**

Fixed the issue with accessing REST API V2 which happened when LDAP is used for STEP authentication and when a user tries to create a REST call is impersonated (e.g., by using an external component).

■ **ISSUE-661733 - Fix for a context issue on the Web UI version 2023.3**

Fixed a problem when contexts with special characters in IDs (for example, braces) were not correctly filtered out from the Global Navigation Panel in the Web UI if they were unchecked in the GUI setup for a current user in the workbench. There is also a hotfix available for this solution that is applicable to `saas-2023.3`, `step-2023.3`, and `step-2023.4`.

■ **ISSUE-662047 - Fix for when a single item creation is blocked in the Web UI**

Now, a problem with data issues (messages generated by business conditions) will be correctly cleared out on the Initiate Item screen in the Web UI.

■ **ISSUE-663682 - Fix for translation status of attributes**

Solved a problem when the translation status always appeared as 're-translation needed.' This bug was introduced by HOTFIX-6824.

■ **ISSUE-665700 - Fix for unable to download CSV**

Fixed `NullPointerException` and `IndexOutOfBoundsException` exceptions occurring when downloading text (.txt) extension files, with the txt mime type but .csv extension in the file name, from the Web UI.

■ **ISSUE-667893 - Fix for issues with list search**

Fixed an issue so list search with In-Memory now also works with characters like '=', ')', '(', and '-' which means using them as raw values. This means the In-Memory version of list search works like the non-In-Memory version.

■ **ISSUE-667910 - Fix for the performance analysis events tab**

Fixed a problem when triggering an event did not log this action into the activity scope, which later can be used by Performance Reports in Events on STEP with Cassandra.

■ **ISSUE-668215 - Fix for system crash when clicking on item list**

Fixed a problem occurring when the Assignment Time and Time in State column values for the Workflow profile screen were calculating even if these columns were not configured in the corresponding WF Profile. This was causing performance problems.

■ **ISSUE-668478 - Fix for STEP allowing entities to be imported with duplicate unique key values**

This is a fix to allow LOV attribute values using IDs to be imported using just the LOV value ID, while also using the attribute as part of a unique key. There is also a hotfix available for this solution that is applicable to saas-2023.3 and step-2023.3.

■ **ISSUE-668484 - Fix for when screen ID conditions did not work for a data container**

Now, screen ID filtering will work for Globally Configured Unfolding Data Containers in the Web UI Node Editor screen. Previously, setting up screen filtering for this component made it impossible to unfold the data container view.

■ **ISSUE-668523 - Fix for the PCM Deadline Processor running slow after STEP upgrade**

This is a performance fix for Oracle systems related to pruning old entries in the transition log.

■ **ISSUE-669353 - Fix for when users cannot navigate to the default Web UI**

Fixed a NullPointerException which displayed when loading the default Web UI with the empty Web UI ID in the browser URL.

■ **ISSUE-669534 - Additional logging for DTP application server**

Added additional logging in the DTP side of the application server to find the root cause of a NullPointerException. There is also a hotfix available for this solution that is applicable to saas-10.3, as well as step-10.3-mp4 and 10.3-mp5.

■ **ISSUE-669933 - Fix for error when trying to update an attribute value in the workflow**

Fixed a problem when it was not possible to save the Attribute Value on the Web UI Node Editor, if it contained a bullet point list with the spaces between a bullet point and a text.

■ **ISSUE-669976 - Fix for Supplier Portal user risk issue**

Introduced a possibility to disable the typeahead suggestions of user groups outside the current user's supplier hierarchy in the Web UI. To enable this possibility, contact Stibo Systems Support.

■ **ISSUE-670119 - Fix for Multi Edit table view data container not forcing privileges**

Fixed a problem when attribute value table headers were shown under the Web UI Multi Edit Data Container view, even though a current user did not have privileges to view them.

■ **ISSUE-670407 - Fix for a Smartsheet error when generating a report**

Fixed a NullPointerException in Smartsheet import during the creation of the error file.

■ **ISSUE-670457 - Fix for when replacing an asset creates a new asset**

Fixed a problem when replacing an asset with the existing asset in the Web UI on a Node Editor screen, it added the picked asset instead of replacing the selected one. There is also a hotfix available for this solution that is applicable to saas-2023.3, step-11.2-mp2, and saas-11.2.

■ **ISSUE-670492 - Fix for when a single asset upload showed two uploads**

Fixed a problem when uploading and inserting a single asset via the 'Asset Importer' configuration in the Web UI caused the BGP ID to state that 2 files were uploaded. This happened because the empty upload form was also counted as an empty file (which was later ignored).

■ **ISSUE-670773 - Fix for the French workbench shortcut not being configured**

Fixed a setback when all shortcuts in the French locale's workbench were displaying 'Ctrl+Plus' instead of the actual shortcut.

■ **ISSUE-670794 - Fix for when the approve button is not available**

Fixed a problem when 'Approve Action' on the Node Editor was not available after adding / deleting references on the Multi-Reference component on a first tab when there was a Data Container Multi-Editor on another tab. There is also a hotfix available for this solution that is applicable to saas-2023.3, step-2023.3, and step-2023.4.



#### ■ **ISSUE-671102 - Fix for RCA - wrong events in OIEs**

Made event filter and generator configuration changes update the change log on the event queue. Now, a message will say that the object type triggers modified with an add / remove / change of an event filter or generator. There is also a hotfix available for this solution that is applicable to saas-10.3, as well as step-10.3-mp4 and step-10.3-mp5.

#### ■ **ISSUE-671128 - Fix for when the OIEP sends data that was not selected**

Now, 'Only Export Selected Objects' and 'Only Export Leaf Objects' checkboxes will be disabled on Outbound Integration Endpoint editor's Advanced Step in the workbench, if a Mapping tab was the chosen node type, different from Classification, product, or entity. It was made to align the behavior with the export manager, where similar checkboxes are enabled only for products, entities and classifications.

#### ■ **ISSUE-671146 - Fix for upgrade 2023.3: Edit 'Started by' user in scheduled processes does not work**

The background (BG) process which gets created for the scheduler configured via 'Schedule Data Export' will get the 'Started by' field based on the 'Started by' field value of the Schedule Data Export BG process.

#### ■ **ISSUE-671488 - Fix for a bug in the mandatory references component in the Web UI**

Fixed a problem when adding a reference to the Mandatory References component in the Web UI did not enable a save button.

#### ■ **ISSUE-671493 - Fix for an 2023.3 upgrade: Thumbnail in Multi Reference component changed**

Introduced a possibility to change a default thumbnail size for thumbnail header on the Web UI Node List. By default, a thumbnail size is set to medium. In order to change this property, contact Stibo Systems Support.

#### ■ **ISSUE-671510 - Fix for when no events are generated when values update from 'EMPTY' to 'YES'**

Fixed a problem occurring when setting an LOV from null value to non-null value queued event with previous (null) value, instead of the new (non-null) value.

#### ■ **ISSUE-671522 - Fix for importing STEPXML files resulting in creation of new assets results in error**

Improved logging when reporting the event loop in the Event Queue / OIEP. Now, more detailed log information will appear in the app server log. There is also a hotfix available for this solution that is applicable to saas-11.1, saas-2023.3, as well as step-11.1-mp4-6, step-11.2-mp2-3, and step-2023.3, and step 2023.4.

■ **ISSUE-671577 - Fix for OIEP: context splitter removes the second part of the number range value**

When the number range had negative numbers during an export, the value was cut in half. Now, the number range is exported correctly. There is also a hotfix available for this solution that is applicable to step-2023.3 and step-2023.4.

■ **ISSUE-671797 - Fix for error importing workflow with default user assignee**

Introduced a private config property to export UserList and UserGroupList tags in STEPXML before STEPWorkflow tag in order to allow the import of non-existing users who are participating in the imported workflow. Notice: setting this property will make STEP XSD validation fail as PIM.xsd has not been changed yet to reflect the changed order. So, keep in mind the risk of setting this property. To enable this functionality, contact Stibo Systems Support.

■ **ISSUE-671816 - Fix for save button not being enabled for LOV attribute value change**

Fixed the way radio buttons are matched with LOV values. Now, save is enabled after changes.

■ **ISSUE-671832 - Fix for when users get the wrong result when trying to retrieve the asset details**

Fixed a problem when the incoming references result was unnecessarily cached when performing a Graph QL request, which made it impossible to get the latest changes immediately.

■ **ISSUE-671852 - Fix for GDSN environments**

A performance fix has been made for background processes (BGP) using parallel threads creating files in the background process area on slow file systems like, e.g., Cloud filesystems. There is also a hotfix available for this solution that is applicable to saas-2023.3, step-2023.3, step-2023.4, gdsn2-receiver-7.0.69, and gdsn2-receiver-7.0.68.

■ **ISSUE-671980 - Fix for IIEP and OIEP slow functionality for STEP application**

This is a performance fix for when values delete. Imports deleting a lot of values will benefit from this fix. There is also a hotfix available for this solution that is applicable to step-2023.3 and step-2023.4.

■ **ISSUE-672072 - Fix for when no post processor is found**

Fixed the 'No post processor found' exception for Outbound Business Rule Message Processor with XSLT Post Processor configured.

■ **ISSUE-672140 - Fix for 'Match & Merge' not working after 2023.3 installation on dev system**

Fixed a problem when Match & Merge REST services executed for different configurations with different matching algorithms were failing due to the caching problem with 'Matching algorithm not found' exception. There is also a hotfix available for this solution that is applicable to saas-2023.3, step-2023.3, and step-2023.4.

■ **ISSUE-672146 - Fix for a problem when downloading an asset from the Web UI**

It was not possible to download very small assets from the Web UI. This has been fixed.

■ **ISSUE-672268 - Fix for very long runtime for small imports of STEPXML**

A performance fix was made to imports.

■ **ISSUE-672561 - Fix for when partial approve for admin user does not work**

A fix was implemented so the Partial Approve logic will consider not only the simple values, but also the inline reference values in case the particular attribute had an inline reference. That will resolve the issue of seeing the privilege dialog. There is also a hotfix available for this solution that is applicable to step-10.3-mp4 and mp5.

■ **ISSUE-672798 - Fix for an unexpected error on PROD on Multi-Edit**

Fixed ClassCast and NullPointerException exceptions on the Web UI Node List screen. There were no values for the data container for the given selection with the Table Header Data Container value component configured.

■ **ISSUE-672836 - Fix for when healthcheck is unable to find blob segment**

A problem in the 'Content missing value' healthcheck was found and fixed. There is also a hotfix available for this solution that is applicable to saas-2023.3 and step-2023.3.

■ **ISSUE-673042 - Fix for Excel export: missing lines from Web UI export**

Fixed a problem when exporting multiple products from the Web UI with the references to the same assets caused a discrepancy in the exported Excel file. The assets only appeared once instead of being exported for each product. It happened because of the bug in the exporter, caused by the Web UI sorting order preservation.

■ **ISSUE-673054 - Fix for Advanced Search freeze window feature**

Clicking Freeze Panes causes the table cells to be re-rendered. When they get re-rendered, the code replaces the existing cell element with a new cell element. The problem is that when a column is resized it gets its new width as an inline-style, and when everything gets re-rendered, this width is not added to the new cell element. The fix will make sure that the cell will fill the column correctly after re-rendering (by getting the column width from the SheetDimensions).

■ **ISSUE-673086 - Fix for export not working for a user group after recent 11.2 upgrade**

Fixed a NullPointerException that appeared in a very corner case, when supplier privileges were checked before checking any other attribute privileges during the export. There is also a hotfix available for this solution that is applicable to saas-2023.3, step-11.2-mp2, step-11.2-mp3, step-2023.3, and step-2023.4.

■ **ISSUE-673294 - Fix for when there are high response times in the Web UI**

Now, all global representations from the Web UI Main screen are cached for 30 seconds (by default) to increase the performance of the Web UI Node List / Node editor component when retrieving the same information about global representations multiple times (depending on configured sub-components).

■ **ISSUE-673810 - Fix for when search from list identifier is not available in local DE in advanced search**

Fixed a problem when the dropdown of ID List search descriptor in the Web UI Advanced Search screen was empty because it contained unsupported tags '<' and '>' in German locale.

■ **ISSUE-673867 - Fix for when index creation is not working in the publication**

Fixed a problem when creating an Alpha Index in workbench would not work. There is also a hotfix available for this solution that is applicable to saas-11.2, saas-2023.3, as well as step-11.2-mp1-3, step-2023.3, and step 2023.4.

■ **ISSUE-673878 - Fix for a punctuation bug when using HTML dashboard widgets**

Fixed a problem when the attribute value search with an exclamation mark (which is a part of a search) was not correctly restored from the STEP URL into 'Advanced Search' search descriptors. It means that if there was a value search with '!' saved as the browser URL and made as a navigation in the Web UI, then Advanced Search did not restore this search correctly as a Value Search, but instead showed it as a Name / ID / Value search.

■ **ISSUE-674382 - Fix for when auto upgrade failed after Cassandra import**

Fixed a problem with the auto upgrading database. Some of the plugins were executed in the wrong order, so one plugin would fail because it depended on another plugin being run, which was run at a later stage. This would happen if you skipped some major versions of STEP. If you upgraded to all lower versions of STEP one by one, this did not happen.

■ **ISSUE-674526 - Fix for 2023.3 upgrade: Use of 'Upload and Insert' function makes images disappear**

Fixed a problem when an inserted and uploaded asset on the Web UI Node Editor Referenced Asset Representation component was intermittently disappearing after pressing a Save button. There is also a hotfix available for this solution that is applicable to saas-2023.3, step-2023.3, and step-2023.4.

■ **ISSUE-674790 - Fix for a problem with assets migration to an external file structure**

Fixed a problem with migration of classifications with a large number of assets. This fix applies to STEP versions 11.2 or before.

■ **ISSUE-674815 - Fix for the match score on potential duplicate relations not populating**

Fixed a problem with searching for actual rank scores when creating clerical review tasks. In result, this was caused missing match score values on Potential Duplicate references.

■ **ISSUE-674896 - Fix for an error in the 'Packaging Hierarchy' Web UI screen on WF - Initiate**

Fixed an IndexOutOfBounds uncaught exception which appeared on the Web UI Node List when localizing number / integer attributes without units.

■ **ISSUE-675038 - Fix for fatal and internal server errors**

The fix limits the number of rows shown on the Classification Web UI screen to 10K - like other places in the UI. This limit (that had previously been implemented for this screen) prevents the application from running out of memory when a lot of nodes are shown on the screen prevents the application from running out of memory when a lot of nodes shown on the screen. Furthermore, the code populating the screen has been changed to be more conservative with its memory usage.

■ **ISSUE-675082 - Fix for error importing workflow with default user assignee: when UserList tag is after the STEPWorkflows tab in the STEPXML**

When changing the handling of a change package item to 'Ignore,' the item still had to be approved before the change package could be sealed. This has been fixed.

■ **ISSUE-675084 - Fix for the ability to increase size of search dropdown box**

Previously, the max width of the suggestions in dropdown was set to 350px. Now, there is no limit to the max size, which means that it will increase to size of the text.

■ **ISSUE-675446 - Fix for when 'Word Matcher' is not working**

Fixed a NullPointerException for editing a normalizer in a Decision table when there is a word matcher with Formula expression configured. There is also a hotfix available for this solution that is applicable to saas-2023.3, step-2023.3, and step-2023.4.

■ **ISSUE-675601 - Fix for an issue after implementing In-Memory**

Event-based export: Fixed meta-data of event so that it will export correct nodeType when running In-Memory.

■ **ISSUE-675980 - Fix for optimistic verification problems when moving objects through workflow**

Fixed a caching problem when running STEP on Oracle without In-Memory. The bug could incorrectly cause optimistic locking errors. There is also a hotfix available for this solution that is applicable to step-2023.3 and step-2023.4.

■ **ISSUE-676463 - Fix for the limit of exported products / columns during Smartsheet Export to avoid OOM**

Introduced config properties to stop the Smartsheet Export conversion if: the amount of exported product is above the configured limit; and the amount of mapped columns is above another configured limit. In this case, Smartsheet Export will fail with the exception which will tell the user that the configured limit has been reached, and that in order to avoid an Out-Of-Memory problem, a process has been terminated. Notice that both properties are disabled by default. Customers should set the limits by their own standards according to their environment configuration and preferences. In order to set these properties, contact Stibo Systems Support.

■ **ISSUE-676533 - Fix for Project Team Migration: Workbench - republish matching events throwing error**

Customer previously reported an error with their matching algorithm configuration. Upon republishing, an error occurred. Now, it should be possible for the customer to republish more than 1,000,000 entity children to the event processor. There is also a hotfix available for this solution that is applicable to saas-2023.3, step-2023.3, and step-2023.4.

■ **ISSUE-676546 - Fix for Category Profile Batch processes not observing epoch for long time**

Fixed so that the background process named 'Category Profile Batch Processes,' which can run for a very long time, is not blocking other processes (i.e., activating Unique Key).

■ **ISSUE-677036 - Fix for timeout / error message in the Web UI**

Fixed a problem when the Web UI was throwing an unexpected exception 'User...Only allowed to do SSO Authentication' after a period of inactivity for externally maintained users on a STEP system with OAuth (keycloak) SSO enabled. There is also a hotfix available for this solution that is applicable to step 2023.4.

■ **ISSUE-677249 - Fix for a queuing / processing problem**

Fixed a performance problem when Generic XML import spent too much time with unnecessary logging, even though it was disabled.

■ **ISSUE-677379 - Fix for 'java.net.SocketTimeoutException: Read timed out' errors on sidecar0.log - unknown but regular sidecar restarts occurring**

A new configuration property has been added that allows setting the timeout used when the Sidecar connects to the application server when the Sidecar is reporting its status. To enable this functionality, contact Stibo Systems Support. There is also a hotfix available for this solution that is applicable to saas-11.1, saas-11.2, saas-2023.3, as well as step-11.1-mp4-6, step-11.2, step-11.2-mp1-3, and step-2023.3, and step 2023.4.

■ **ISSUE-677793 - Fix for when anchored objects in InDesign templates are not updated correctly**

When an InDesign publication is duplicated in the workbench and then the new publication is updated by the InDesign server, all references from a text frame to a version must then be updated as the versions have new IDs in the duplicated publication. References to a version from an anchored text frame are now also updated.

■ **ISSUE-677806 - Fix for when the Web UI error messages are not displayed correctly**

When an action fails with multiple errors a headline and a description have been added to the sub alerts in the side panel.

■ **ISSUE-677897 - Fix for NPEs on Dev environment**

Fixed NullPointerException thrown by the OIEP/IIIEP monitoring , if the OIEP/IIIEP cannot be retrieved because it had been deleted.

■ **ISSUE-678328 - Fix for thread leak on SaaSv2 systems**

This is now fixed. Previously, on SaaSv2 systems, a new thread was started every two hours and never stopped again.

■ **ISSUE-678556 - Fix for Web UI warning: The node could not be expanded as it has more than the configured maximum of displayable children**

Fixed a problem when entity references were counted twice, which caused a 'The node cannot be expanded...' message to be shown in Web UI when trying to expand an entity with a huge amount of references - but not big enough to prevent it from being expanded.

■ **ISSUE-679535 - Fix for when the healthcheck screen is missing the blue expansion arrow post upgrade to 2023.4**

Now, the healthcheck screen shows the details icon by default.

■ **ISSUE-679582 - Fix for duplicate data container row being created with same data container key**

To fix a problem with 'SnapshotTooOldException' when running 'Check Duplicate Key' on a data container type, apply HOTFIX-7163.

■ **ISSUE-679677 - Fix for a setback: Certain DTP documents might get inconsistencies introduced by 'Upgrade Plugin'**

There was a bug that could cause inconsistencies in DTP documents (and Assets). Now, the upgrade plugin for injecting stibo.uid values on DTP documents will skip documents having any existing stibo.uid values, and the functionality will work as expected.

■ **ISSUE-679687 - Fix for STEP logs filled with warnings**

Now, the Admin Portal GC log parser will not spam the application server logs about the impossibility of parsing the gc.log file.

■ **ISSUE-679743 - Fix for certain ACES Imports failing with java.util.ConcurrentModificationException**

Fixed ConcurrentModificationException inside of JS scripting API caused by race conditions.

■ **ISSUE-679843 - Fix for LFSC error on startup / attribute schema history workbench tab**

Lock-free Schema Change: Fixed a problem deserializing lock-free schema change metadata for attribute validation changes. This could prevent a system from starting up when upgrading to 2023.4. Another symptom is an internal error in the workbench when opening the Schema History tab on Attribute objects (in the System Setup), which had previously had their validation changed.

■ **ISSUE-679894 - Fix for when a large amount of LOV values created an error**

Fixed a problem when an error message about a huge amount of LOV values was shown on the Web UI Create Product Variant action dialog when the variant attribute link contained the LOV filter, which decreased the amount of values, but the link was inherited. There is also a hotfix available for this solution that is applicable to step-11.2, 11.2-mp1, 11.2-mp2, 11.2-mp3, step-2023.3, and step 2023.4. The hotfix is included in step 2023.3-mp1 and 2023.4-mp1.

■ **ISSUE-680111 - Fix for a session timeout**

Increased a timeout of an Authentication.Impersonated.ValidityInSeconds config property from 1 hour to 24 hours to avoid unexpected behavior when the Web UI session is still valid, but the Keycloak password becomes invalid.

■ **ISSUE-680628 - Fix for issues in Workflow Widgets when upgrading to STEP 2023.4**

Fixed a problem when the Status Selector width on a Web UI Homepage could be affected by external CSS configured in other widgets. There is also a hotfix available for this solution that is applicable to step-2023.4.

■ **ISSUE-680663 - Fix for when editing LOV values in the Web UI destroys inline formats**

Fixed an incorrect error message while editing an LOV value with HTML tags in the Web UI.

■ **ISSUE-680702 - Fix for when comparer functions cannot be outsourced into the library**

Fixed a NullPointerException which occurred when calling a comparator function from a business library in a JavaScript business rule. There is also a hotfix available for this solution that is applicable to step-11.2-mp1, 11.2-mp2, 11.2-mp3, step-2023.3, and step 2023.4. The hotfix is included in step-2023.3-mp1 and 2023.4-mp1.



■ **ISSUE-680866 - Fix for Asset Publisher not setting to the right MIME Type**

Made Asset Publisher respect manual mime-type mappings set by the 'DocumentContent.ExtensionToMimeType' property.

■ **ISSUE-681001 - Fix for customer's preprod environment not being accessible**

Fixed a problem when the 'Too many revisions' healthcheck occupied too much memory when retrieving the BLOB asset contents, which can be quite big.

■ **ISSUE-681142 - Fix for when the search option in the 'Select Node(s)' screen does not work when adding reference**

Fixed a problem when picking a suggestion on a 'Search' tab of an 'Add reference' node picker on the Web UI Multi Reference screen caused a search result to not display, if a search was configured with attribute value criteria. It happened because of the second search being executed after picking a suggestion on a node ID, which did not pass the configured attribute criteria. Now, the second unnecessary search has been removed. There is also a hotfix available for this solution that is applicable to step-2023.3 and step-2023.4.

■ **ISSUE-681337 - Fix for 2023.4: creating a collection from a file import throws an error**

Fixed an exception 'java.sql.SQLException: org.datanucleus.store.rdbms.datasource.dbcp2.DelegatingPreparedStatement with address: 'NULL' is closed', which was thrown when creating a collection from a file.

■ **ISSUE-681511 - Fix for when the system is not showing the warning message for mandatory attribute**

Fixed a problem when a mandatory attribute value was marked with an empty exclamation mark without warning when changing the empty value to non-empty and again to empty on the Web UI Node Editor.

■ **ISSUE-681519 - Fix for data inconsistencies found in Cassandra database (PROD)**

Improved garbage removal of events in Cassandra.

■ **ISSUE-681754 - Fix for missing classifications in BMEcat export**

Fixed the issue with missing classifications in BMEcat export when classification references are inherited to the exported product. There is a hotfix for this solution that is applicable to step-11.2-mp2, step-11.2-mp3, step-2023.4, and step-2023.4-mp1.

■ **ISSUE-682027 - Fix for 'hidden' bind not working on a screen for assets**

Now, a Hidden JavaScript bind will correctly work for a business condition, configured on a Web UI Node Editor to hide an attribute value for a currently-selected asset.

■ **ISSUE-682666 - Fix for when revision attribute groups cannot be expanded**

Items belonging to a group component were not rendered properly when they were not marked as always visible from the start. A fix was implemented to properly render all child components under the group component. There is also a hotfix available for this solution that is applicable to step-11.2-mp2, 11.2-mp3, step-2023.3 and step-2023.4.

■ **ISSUE-682735 - Fix for broken thumbnail for default image**

Fixed a problem when Web UI Node List's Thumbnail Header did not show an empty cell for external assets with empty external URI.

■ **ISSUE-683266 - Fix for error messages from the business rules not shown properly in the Web UI**

Previously, a value threw in business rules was not handled and presented in an alert. There was only information about the issue without details. Now, the value which is thrown is presented in the alert.

■ **ISSUE-683351 - Fix for inability to map multi-variable to data container**

Fixed unexpected exception when trying to map a multi-variable mapping rule to a data container in workbench Import Manager's mapping pop-up.

■ **ISSUE-683400 - Fix for when editing the 'Global Navigation Panel' tree or search fails with exceptions**

Fixed a setback, when navigating to main area components in Design Mode with Context Global representation configured, caused the unexpected exception to appear due to the problem in caching functionality.

■ **ISSUE-683841 - Fix for Configuration tab in admin portal not having all information**

Improved Admin Portal logging.

Made change so that the Admin Portal uses a configurable property to change a default timeout of the requests between servers in a cluster.

Fixed NullPointerException when running `./spot --prop=*` and there are undocumented properties in STEP, and added better logging in that case. There is also a hotfix available for this solution that is applicable to step-2023.4.

■ **ISSUE-684295 - Fix for 'Show LOV IDs' setting in Web UI not working in Multi Edit screens**

Now, LOV IDs will be shown in typeahead suggestions for the Table Header Value on Web UI Node Lists, if the Show LOV IDs parameter is configured in Design Mode for this header. There is also a hotfix available for this solution that is applicable to step-11.2-mp2, 11.2-mp3, and step-2023.3, and step 2023.4.

■ **ISSUE-684371 - Fix for workbench: Internal application error when choosing BMEcat 2005 in the Export Manager**

Fixed NullPointerException that was thrown when choosing the BMECat2005 plugin in STEP Workbench Export Manager without doing the EasySetup for this component, so the attribute 'stibo\_ISO-639-2' was missing on a system.

■ **ISSUE-684519 - Fix for when users cannot deploy configurations**

The importer memory-measuring feature 'ApproximateMemoryRequirement' did not work with the new resilience feature using shared memory on SaasV2. This has been fixed. There is also a hotfix available for this solution that is applicable to inmemory-7.0.71.

■ **ISSUE-684569 - Fix for Excel Import Mapping in workbench in German language not working**

Fixed a problem where radio button labels on the Import Manager mapping dialog in the STEP Workbench were truncated in the German locale. There is also a hotfix available for this solution that is applicable to step-2023.4.

■ **ISSUE-684591 - Fix for an error with the configurations import to a lower environment**

Fixed a NullPointerException when importing a configuration for non-existing Outbound Integration Endpoint.

■ **ISSUE-684606 - Fix for inability to create an LOV value with <> symbols**

Fixed adding values to LOV with STEP tags. There is also a hotfix available for this solution that is applicable to step-11.1-mp2, 11.1-mp3, 11.1-mp4, 11.1-mp5, 11.1-mp6, step-11.2- mp1, 11.2-mp2, 11.2-mp3, step-2023.3, and step 2023.4.

■ **ISSUE-684644 - Fix for privilege required despite BR running as privileged**

This fix allows the 'Remove from Workflow' action to execute as privileged when so configured.

■ **ISSUE-684988 - Fix for the event processor: error asset publisher processor**

The asset publisher uses an asynchronous upload function, which in the Amazon S3 case, did not take proxy settings into account. In the backported versions, this still only supports not-authenticated proxies due to the Amazon SDK version.

■ **ISSUE-685003 - Fix for Promote Article Ordinary job processing slowly**

Fixed performance problem during matching that was caused by unnecessary calculated attribute value calculations, even if the particular attribute is not a part of the attribute group, configured for a survivorship rule.

■ **ISSUE-685098 - Fix for viewing some assets in the Web UI causing an error**

Fixed a problem when an unexpected exception was thrown in Web UI when trying to view the asset content for an asset, which size is less than 4 bytes. There is also a hotfix available for this solution that is applicable to step-2023.3 and step-2023.4.

■ **ISSUE-685442 - Fix for when updating a Change Package runs into an exception 'Node specification cannot be null'**

Adding an asset that was never approved to a change package when a specific private property was set would cause a `java.lang.IllegalArgumentException: Node specification cannot be null`. If you run into this same situation / error, contact Stibo Systems Support for help.

■ **ISSUE-685444 - Fix for production: optimistic lock recovery in STEP healthcheck**

Fixed an optimistic lock problem when integration endpoint was rescheduled after a failure. There is also a hotfix available for this solution that is applicable to step-2023.3, step-2023.3-mp1, step-2023.4 and step-2023.4-mp1.

■ **ISSUE-685455 - Making it default to include profiling data when sending diagnostics**

When you open the admin portal and click on the 'Send Diagnostics' tab, the 'Include Profiling Data' is now checked by default.

■ **ISSUE-685615 - Fix for all BGP processes are erroring out with `org.datanucleus.transaction.NucleusTransactionException: Invalid state. Transaction has already started`**

Reading and writing data used to store configurations for Instrument could in some cases fail when multiple users were updating multiple configurations at the same time.

■ **ISSUE-685719 - Fix for when users cannot search for parent ID or name in the Smartsheet**

Fixed a problem when a parent search did not return any results in Excel Smartsheets. There is also a hotfix available for this solution that is applicable to step-11.1-mp2, 11.1-mp3, 11.1-mp4, 11.1-mp5, 11.1-mp6, step-11.2, step-11.2-mp1, 11.2-mp2, 11.2-mp3, step-2023.4, and step 2023.4-mp1.

■ **ISSUE-685859 - Fix for space usage in /tmp**

When importing assets with the Web UI Asset Importer, temporary files would be left behind in /tmp, which could eventually cause the disk to run full. This has been fixed.

■ **ISSUE-685990 - Fix for mail formatting not working properly**

When sending emails from OIEP, the body of the mail was treated as HTML even if it did not contain any kinds of tags. Now, mail will be sent as plain text if there are no tags in the body text. Plain-text mails show the proper newlines.

■ **ISSUE-686164 - Fix for when item revisions and the workspace button actions are not behaving as expected**

'Hiding columns' will be based on the component visibility instead of the potential visibility, since it is more consistent through the system. There is also a hotfix available for this solution that is applicable to step-2023.3 and step-2023.4.

■ **ISSUE-686312 - Fix for when export notifications do not appear**

This fix ensures that the parsing of background process messages will not cause errors, which in turn will ensure that export notifications will appear consistently.

■ **ISSUE-686436 - Fix for event processor failing with OptimisticLockRetryCountExceeded errors**

Fixed a problem with fetching references for data containers, when the object owning them had been deleted.

■ **ISSUE-686963 - Fix for RCA: very bad system performance**

Performance optimization for the Web UI component that gives notifications for background processes (BGPs). There is also a hotfix available for this solution that is applicable to step-11.1-mp1, mp2, mp3, mp4, mp5, and mp6.

■ **ISSUE-687240 - Fix for upgrade 2023.4 version: data containers allow multiple classifications to be selected in the pop-up navigation in the Web UI**

Disabled the ability to add multiple classifications as keys to data containers in the pop-up navigation in the Web UI.

■ **ISSUE-687529 - Fix for when BackgroundProcessStatisticsCollector consumes way too much memory**

Decreased the memory usage of BGP Statistics Collector by fixing the cleanup and using a better API to retrieve the BGP by status.

■ **ISSUE-687535 - Logging added for issue: Pagination is not working in Thailand context**

Additional logging has been added to help diagnose the root cause of the problem.

■ **ISSUE-687872 - Fix for deletion issue**

Improved reference metadata deletion speed when force deleting the reference type in workbench.

■ **ISSUE-688034 - Fix for button not working properly when applying filters**

Business actions run from the Multi Reference component will now receive the correct selection even when one or more filters has been applied to a column.

■ **ISSUE-688363 - Fix for business condition not working in screen mapping condition for Basket screens**

Fixed a problem occurring when Web UIs Main Screen business condition mappings did not work for the Basket screen when a user was clicking on the 'Go to basket' button from the Global Navigation Panel. Notice that business conditions for the basket screen cannot utilize the 'current node' JavaScript bind as there is no current node. There is a hotfix for this solution that is applicable to step-11.2-mp2 and step-11.2-mp3.

■ **ISSUE-688646 - Fix for when users cannot add a workflow item to a change package**

On a system with many contexts, adding an item to a change package could fail if a product was included as a dependency and this product contained a lot of tables. This has been fixed.

■ **ISSUE-688763 - Fix for customer-specific product outage**

There was some code in relation to connecting to the database that was not thread safe. Thus, it could create a loop in a data structure, if two threads were accessing it concurrently. Subsequently, when processes were trying to access the database, they would get stuck in an infinite loop over this data. There was a hotfix created for the solution.

■ **ISSUE-689314 - Fix for Attribute Value Migration failure (divide by zero)**

Fixed division by 0 error, caused by 0 value7 initial rows when preparing for compact soft value migration.

■ **ISSUE-689467 - Fix for issues when customer upgraded to 11.1-MP6 from 11.1-MP4 during the maintenance window**

Now, the Web UI Node Editor's Multi Editor Data Container will not throw the 'value is being modified by another user' error when Use Immediate Save is enabled for this component and there are headers with date validation base type attributes configured.

■ **ISSUE-689792 - Fix for failed background process**

Now, the Inbound Integration Endpoints with preprocessor will not preprocess the already processed file a second time if the background process has failed and user resumed it. Instead, an already preprocessed file will be processed by import engine. Also, fixed problem occurring when resuming the failed BGP caused the input file to be deleted, so if a BGP fails again, it cannot be resumed anymore.

■ **ISSUE-689811 - Fix for ETIM sorting in Web UI**

Fixed ETIM attributes sorting in Web UI using the 'Classification-Specific Attribute Value Group Component.'

■ **ISSUE-690779 - Fix for table transformation warnings on logs**

Reduced log level on MoveUnitsToHeader from Warning to Info as it is really only need in the event of requesting additional information.

■ **ISSUE-691169 - Fixed CSV to XML conversion error within IIEP -**

Fixed a problem occurring when a CSV import with "Allow multiple values" did not unescape escaped double quote values, if there were multiple such values in a single line. There is a hotfix for this solution that is applicable to step-2023.3, step-2023.3-mp1, step-2023.4, and step-2023.4-mp1.

■ **ISSUE-691282 - Fix for when users are unable to change the data container import removal options**

Fixed a problem when it was not possible to remove a mapped data container replacement rule from the Import Manager Advanced step in workbench.

■ **ISSUE-691341 - Fix for API node.queryReferencedBy(null) not working for some reviews**

Fixed a NullPointerException when retrieving all references via queryReferencedBy(null) JS business rule API.

■ **ISSUE-691383 - Fix for portal not responding (status 401)**

Fixed the issue with Web UI not responding, which was caused by GraphQL authentication errors, which may occur when only one step node is restarted in multi-node STEP environment. There is a hotfix for this solution that is applicable to step-11.1-mp1 through mp6 and step-11.2-mp2 / mp3.

■ **ISSUE-691606 - Fix for attributes not displaying when revision attribute group is expanded**

Changing logic for hidden columns in MultiFacetScreenView to cover all currently known corner cases. Adding different kind of PropertyItems to handle when calling MakeDifferentAction.

■ **ISSUE-692398 - Fix for IIEP not processing import file**

Fixed a problem occurring when the Generic XML converter did not escape illegal XML characters in Attribute IDs after conversion, which caused an import to fail.

■ **ISSUE-692476 - Fix for a file upload widget: no notification in BGP panel**

Fixed a minor Web UI setback causing BGPs related to IIEPs to not be shown in the widget showing notifications for BGPs.

■ **ISSUE-692648 - Fix for error with adding valid attributes to reference types**

Fixed mismatched sorting of references on 'Valid for Entity Reference Types' flipper on Validity tab of an attribute.

### ■ **ISSUE-693141 - Fix for DataNucleus Level2 cache problems**

Running a STEP cluster with more than three servers AND running without In-Memory will not work without this hotfix in releases 2023.3 and 2023.4. HOTFIX-7237, HOTFIX-7238 and HOTFIX-7253 has now been released and is applicable for branch step-2023.3-mp1 and step-2023.4-mp1.

### ■ **ISSUE-693638 - Fix for an internal error when editing some reference metadata attributes**

Fixed a problem in the healthcheck 'Unrevised values that should be revised'.

### ■ **ISSUE-694538 - Fix for when the Web UI rich text editor does not copy tags**

Fixed a problem when an attribute value with <hyperlink target=...> could not be copied and pasted on the Web UI node editor, when there was no tag 'hyperlink target' in STEP and the validator failed with unexpected error.

### ■ **Fix for a certificate update error**

Hotfix with additional debugging for certificate updates.

### ■ **Fix for the PLM 'Compare Requirements' Tab not showing correct samples in the comparison table**

This patch fixes the behavior where samples were duplicated for Compare Requirements. Now, only the actual entries which are returned by the Ggraphql query are presented within the tab instead of the actual entries and a duplicate of them.

### ■ **Fix for ECLASS Advanced: Export is not taking into account 'Format' option**

Transforming '<' and '>' tags yielded an unexpected result for ECLASS Advanced. This fix deals with the proper conversion of and tags.

### ■ **Fix for missing configuration information pushed by the MongoDB Connector**

Attribute related tags and fields from STEPXML will now be exported to mongo. There is also a hotfix available for this solution that is applicable to saas-2023.3, mongodbadapter-7.0.65, saas-11.1, saas-11.2, and mongodbadapter-7.0.64.

### ■ **Fix for an error (async) while counting index table partition edge\_parentid for repartitioning**

STEP systems running on Cassandra with an object having many (millions) of sub-objects might have problems with getting to these sub-objects when looking in older revisions (and the same case if having objects with millions of incoming references). This will fix any such issues once the internal re-partitioning process has processed these large hot-spots.



### ■ **Fix for when the automotive system crashes when importing a large amount of supplier data**

Fixed a problem when importing multiple TecDoc supplier files simultaneously which caused the conversion to fail. There is also a hotfix available for this solution that is applicable to automotive-7.0.45 and saas-10.3.

### ■ **Fix for OIEP with business rule-based message processor fails as BRA failed to resolve parameter**

Fixed a problem when Classification Product Link Type bind in a Javascript business rule configured as a Node Handler for Business Action Outbound Event Processor, caused an unexpected exception to appear, which was failing the processor. Now this bind resolves correctly to the configured link type.

### ■ **Fix for PDX: PDX OIEP rolling back transactions during publishing**

Now, the PDX delivery will not fail if an update of PDS Syndication time attribute (which can be configured via PDSDelivery.AssetUploadedAttributeID config property) fails by any reason.

### ■ **Fix for an inbound integration endpoint error preventing product imports**

Fixed a problem when Classification Product Link Type bind in Javascript business rule, configured as a Node Handler for Business Action Inbound Event Processor, caused an unexpected exception to appear, which was failing the processor. Now, this bind resolves correctly to the configured link type.

### ■ **Fix for GDSN Import**

GDSN Receiver would fail if two CIN files containing the same packaging hierarchy were imported at the same time. This is fixed.

### ■ **Property direction loading issue fix**

Fix for a loading issue that occurred when the Property Direction was set to 'vertical' on the Multi Reference component on the Web UI Node Editor. A hotfix is available for step-10.2-mp1.

### ■ **Privilege fix for integration endpoint via REST API V2**

Previously, it was possible to invoke, enable, or disable an integration endpoint via a REST API V2 call if valid STEP credentials were provided. This was also possible for users who had view-only privileges. Now, the privileges for the current user are checked before performing the invoke, enable, or disable action.

### ■ **Fix for System Administration - REST API version 1 - Swagger UI cannot be started**

Previously, all third-party libraries with older jQuery references were upgraded to newer versions for security reasons. Unfortunately, that introduced an error in the Swagger UI wrapper web page that is

used for the legacy REST API documentation. Now, the index.html is bundled with the specific Enunciate version that generates the documentation data, so it is replaced with a fixed version during the build process of STEP

■ **Fix for ECLASS Advanced: Import encountered node data error after node children while using business rules**

Fixed the ECLASS Advanced Preprocessor to correctly create STEPXML files when a product contains child products and values. This will prevent the error in the importer which occurs when it tries to import the file using Inbound Integration Endpoint with processing business rules attached. There is also a hotfix available for this solution that is applicable to saas-11.1 and eclass-advanced-model-7.0.13.

■ **Fix for when TecDoc Supplier Data import throws an error**

Fixed a problem when automotive list of values (LOV) Cache Pool got stuck in an infinite loop causing a stack overflow.

■ **Fix for when TecDoc supplier import gave 'Conversion failed' message**

Fixed a problem when importing multiple TecDoc supplier files simultaneously would cause the conversion to fail. There is also a hotfix available for this solution that is applicable to automotive-7.0.45, automotive-7.0.46, automotive-7.0.47, automotive-7.0.48, automotive-7.0.49, automotive-7.0.50, automotive-7.0.51, automotive-7.0.52, automotive-7.0.53, automotive-7.0.57, and automotive-7.0.58.

■ **Fix for GDSN PROD: Import process takes a long time**

When the GDSN Receiver processes CIN import files, the files appear to contain more messages and split the file in one file per message. If the import file contained only one message, the import file was still copied to a new file. This split is now avoided so the creation of an additional file is skipped. Settings were updated for the parallel worker queue, when the import is done in more threads, to make sure that more import files are queued up for the workers. There is also a hotfix available for this solution that is applicable to gdsn2-receiver-7.0.68.

■ **Fix for InMemory.OffHeapMemory: 11.1 GB used out of 5 GB**

Improved a message for OffHeapMemory sensor when Builtin.OffHeapMemoryLimit.Percentage property is used, to show a total amount of memory instead of the value of Builtin.OffHeapMemoryLimit property, which is not used in this case.

■ **Fix for an error with Typeahead on search field in the workbench**

Fixed a NullPointerException in InMemory Typeahead caused by a data inconsistency, when there was an LOV without 'domain details' information in the database. Now, the Typeahead should not be blocked in the workbench anymore, and additional information about the inconsistency will be logged to the application server logs.

### ■ Fix for when no SDL returns after translation

Code changes were done to avoid the exception errors only. Currently, STEP was not considering status code 11 (cancelled) and 12 (new) as mentioned in the SDL API documentation. After the code changes were done, STEP will acknowledge the status code 11 and 12, but will not react to it. For that, the customer was advised to create an Enhancement Request (ER issue) so that a detailed analysis can be done to get a possible solution.

### ■ Fix for when STEP is unavailable

Introduced a config property to temporarily disable office-preview in order to prevent disk space consumption and potential STEP failures. Also, introduced a config property to control the maximum size of office documents processed by office preview with default 50MB. This only converts the first page, the one used for the thumbnail.

### ■ Fix for when a custom export is not successful when executed from the 'Basket' ribbon

Fixed a problem when the Custom Export / Export from a template is executed from the Web UI Basket delivered an empty result if there were two temporary collections for a current user with upper and with lower case user ID. Now, the exports will pick the correct basket collection.

### ■ Additional logging for TecDoc Supplier data import on PROD throws a NullPointerException

Added additional logging to find root cause of problem.

### ■ Fix for when a vulnerability test messages included detailed error messages

Now, the exception will not be exposed when accessing SAML StepLogout resource in non-authenticated session or outside of STEP. There is also a hotfix available for this solution that is applicable to saml-7.0.29 and saml-7.0.31.

### ■ Fix for NullPointerException - Error Tab Referenced to

The 'Orphan publication data' health check could not fix problems with actual pages. This has been fixed.

Deletions from the workbench that include publication groups, publications, or publication sections will be run in a background process. This is to avoid data inconsistencies caused by closing the deletion dialog while the deletion is running.

### ■ Fix for Kafka delivery with multiple partitions

Kafka delivery has been updated to support publishing to multiple partitions in a topic instead of always publishing messages to partition 0.

**Note:** Customers may want to search Stibo Systems Support Portal for their Issue Numbers (if shown). To do so, while in the Support Portal, navigate to Issues (in the header bar) and then select 'Search for Issues.' Click on the 'Advanced' option on the filtering bar, and then type in 'issue=' and the issue number. Press Enter or click the magnifying glass icon to run the query. **Users can only view Support Portal issues for issue numbers that they have privileges to access. If the issue is not applicable to the user searching, then a 'No issues were found to match your search' message displays.**