

2023.3 Release Overview

Release Date: September 27, 2023



Before you get started...

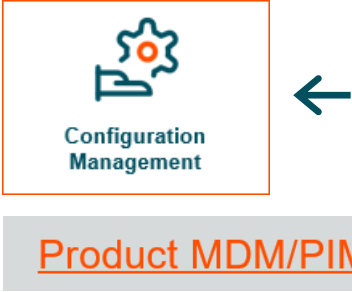
... a few words on 2023.3!

- **2023.3** is our latest release and it's available only 3 months after 11.2 (2023.2) was released. Why? Because you expected it! Quarterly releases are upon us, starting with 2023.3!
- **Why 2023.3?** We needed a simple naming convention to easily identify releases in this new cadence. The first four digits (2023) indicate the year of the release. The last one (3) indicates the calendar quarter. The next releases will therefore be named 2023.4, 2024.1, 2024.2 and so on.
- **Why Quarterly Releases?** Releasing 4 times a year instead of 2 will benefit you and your business. More releases means a shorter time to market so you can take advantage of the new capabilities faster. It also means faster market feedback leading to an improved overall quality of the solution. And by releasing more frequently, we can be more responsive to changing market conditions and quickly enhance our solution to best fit your needs. Finally, with this shorter release cycle and automated updates, we're aiming at making upgrades seamless for you and your teams, so you always benefit from our latest technology. **This will first apply to our SaaS v2 customers.**

Browsing Tips

Welcome to the 2023.3 Release Overview Deck. Here are a few tips to help you browse the slides:

1




Configuration Management

Product MDM/PIM


We've included shortcuts in this deck so you can easily reach the content you want to see. Clicking an initiative tile, a back arrow or an underlined text will take you there in no time!

2



Most of the following slides contain direct links to additional content (webpages, supporting documents*, etc). A "pointing hand" cursor will indicate hidden content!

3



@ADMIN

You're looking for information based on user roles? We've got you covered! Simply search this deck (Ctrl + F or Command + F) for @ADMIN, @BUSINESS USER or @DEVELOPER to find the relevant slides for each.

*Release Notes, Release Videos, Product Showcases. Not all initiatives include Release Videos. Community access is required to watch videos.

Highlight Slide 101

Our highlight slides contain a lot of information. The example below details the type of content to expect and where it can be found on the slides.

Release Version → 23.3 HIGHLIGHT ← Applicable to all Domains ← Which Domain(s) this initiative is applicable to

Initiative Name → **Faceted Search for Customer, Supplier and Location MDM**

Market Problem → **There is a market need for a powerful and easy to use search interface for non-expert end users** ← @BUSINESS USER ← Which User Role(s) this initiative is mainly addressing

Problem vs Solution →

When Faceted Search was first introduced it did not support Customer, Supplier and Location domain use cases (entities, data containers) and was only relevant for PMDM customers, making for an inconsistent search experience across domains.

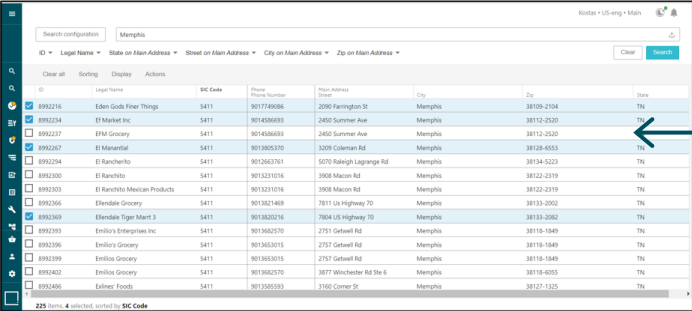
With 23.3, we are extending the Faceted Search capability with support for entities and data containers, and thus support searches for Customer, Supplier and Location data. This delivers a consistent and user-friendly experience while enabling users to find Products by their associations to Suppliers, Customers and Locations and find Products by their supplemental product data such as reviews. Moreover, it allows searching within and across domains therefore supporting true multidomain use cases.

This is a joint initiative between the CMDM and PMDM teams.

Supporting Documents* → **RELEASE NOTES** **RELEASE VIDEO** ← Screenshot ← Tip: use your PDF reader's zoom for a detailed look at the images!

Please refer to your Account Manager ← Browse back to the Release Initiative Map

Which License is required to unlock this capability



ID	Legal Name	State on Main Address	Street on Main Address	City on Main Address	Zip on Main Address	State
8992216	Eden Gods Fine Things	5411	9017749086	2050 Farrington St	Memphis	38109-2104 TN
8992214	Ef Market Inc	5411	9014386693	2450 Summer Ave	Memphis	38112-2520 TN
8992217	EFM Grocery	5411	9014386693	2450 Summer Ave	Memphis	38112-2520 TN
8992267	Ef Marantial	5411	9013805970	3209 Coleman Rd	Memphis	38128-6553 TN
8992294	Ef Ranchoito	5411	9012667967	5070 Raleigh LaGrange Rd	Memphis	38134-5223 TN
8992300	Ef Ranchoito	5411	9012310196	3908 Macaul Rd	Memphis	38122-2319 TN
8992303	Ef Ranchoito Mexican Products	5411	9012310196	3908 Macaul Rd	Memphis	38122-2319 TN
8992366	Eleudale Grocery	5411	9013821469	7871 Us Highway 70	Memphis	38133-2002 TN
8992369	Eleudale Tiger Mart 3	5411	9013820216	7804 US Highway 70	Memphis	38133-2002 TN
8992393	Emilio's Enterprises Inc	5411	9013802570	2751 Getwell Rd	Memphis	38118-1849 TN
8992396	Emilio's Grocery	5411	9013803015	2751 Getwell Rd	Memphis	38118-1849 TN
8992399	Emilio's Grocery	5411	9013803015	2751 Getwell Rd	Memphis	38118-1849 TN
8992402	Emilio's Grocery	5411	9013802570	2877 Winchester Rd Ste 6	Memphis	38118-4050 TN
8992486	Estee's Foods	5411	9013805993	3340 Corner St	Memphis	38127-1325 TN

*Not all initiatives include Release Videos. Community access is required to watch Release Videos.

Table of Contents

- [1 Introduction and Highlights](#) – General updates (events, Communities, Academy, release map and more!)
- [2 MDM Platform](#) – New initiatives related to STEP core, including cross-domain Enhancement Requests
- [3 Product MDM/PIM](#) – New initiatives related to the Product domain
- [4 Customer, Supplier and Location MDM](#) – New initiatives related to Customer, Supplier and Location domains
- [5 Product Data Exchange](#) – New initiatives related to PDX Onboarding and Syndication
- [6 Looking back – 11.2 and 11.1 Highlights](#) – Major initiatives of our last 2 releases
- [7 Social Networks](#) – Follow Stibo Systems!
- [8 One more thing...](#)

Introduction and Highlights

Introduction and Highlights

1

[Connect 2023 and Upcoming Events](#)

2

[Community Updates](#)

3

[MDM Academy Updates](#)

4

[Product Documentation, Newsletters, Resource Library](#)

5

[Benefits of Upgrading](#)

6

[Release Activities and Dates](#)

7

[Release Highlights](#)

8

[Release Initiative Map](#)

CONNECT 2023

NOVEMBER 14-16

GO BEYOND

BETTER DATA. BETTER BUSINESS. BETTER WORLD.

MADRID
SPAIN

Explore the Event

Other Events




Stibo Systems Online Community

Customer Community

Learn, share and grow your MDM knowledge by interacting with a global community of users.

SIGN IN





With our Online Community get exclusive access to a wealth of opportunities:

- Participate in peer-to-peer forums and groups
- Pose questions, provide answers and share your first-hand knowledge
- Connect directly to Stibo Systems' experts to get the latest software updates
- Grow your expertise by building your MDM network
- Share and vote on new ideas
- Follow release communications (download release decks, read release notes, watch release videos and more!)
- Attend our Community Live webinars

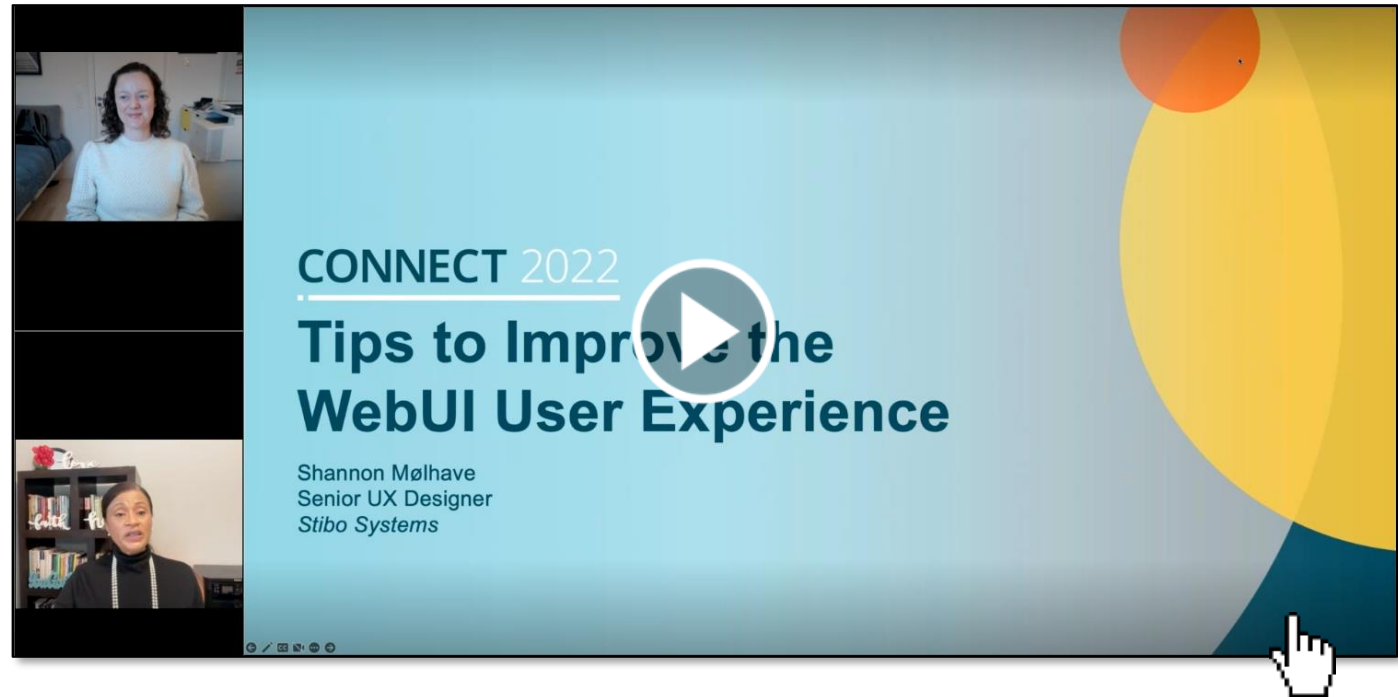
Community Live Talks

Exclusively for our Stibo Systems Community

Replay previous sessions!

- [Meet Adrian Carr, Chief Executive Officer](#)
- [Let's Dive into the Documentation](#)
- [Exploring Releases](#)
- [Web UI Tips and Tricks](#)
- [ML/Augmented MDM](#)
- [STEP to Success with our MDM Academy](#)

Stay tuned for upcoming sessions!



If you are interested in leading or co-presenting a future Community Live event, please contact TOVO@stibosystems.com

MDM Academy Offerings

You want to connect and learn with Stibo Systems? Reach out to our MDM Academy! Find below our full interactive offering (click on courses for more info), including new courses in our program:

PROJECT	BUSINESS	ARCHITECTURE	APPLICATION	DEVELOPMENT	MANAGE
MDM Solution Fundamentals					
STEP for MDM Experts					
MDM Project Fundamentals	MDM Solution Design	Data Modeling	JavaScript Business Rules	System Admin Fundamentals	
	MDM Solution Architecture and Integration	Data Management	Integration Advanced		
		Workflows and Web UIs	Web Services		
		Publishing	Extension API		
		Customer MDM Configuration for B2C	Data as a Service		
		Customer MDM Configuration for B2B			
		Customer MDM Match Tuning			
		PDX Syndication with STEP			
INDUSTRY SOLUTIONS					
Accelerator for Retail	PDX Onboarding with Accelerator for Retail				



New! Virtual classroom

- PDX Syndication with STEP

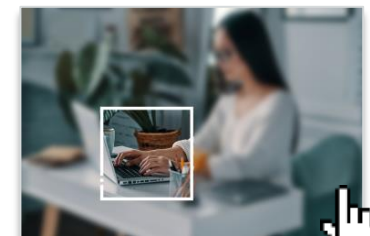
In development

- PDX Syndication with 1WorldSync – new virtual classroom course
- Integration Advanced – new, improved version of our existing course
- Solution Architecture – new, improved version of our existing course

Part of Track Certification

Not Part of Track Certification

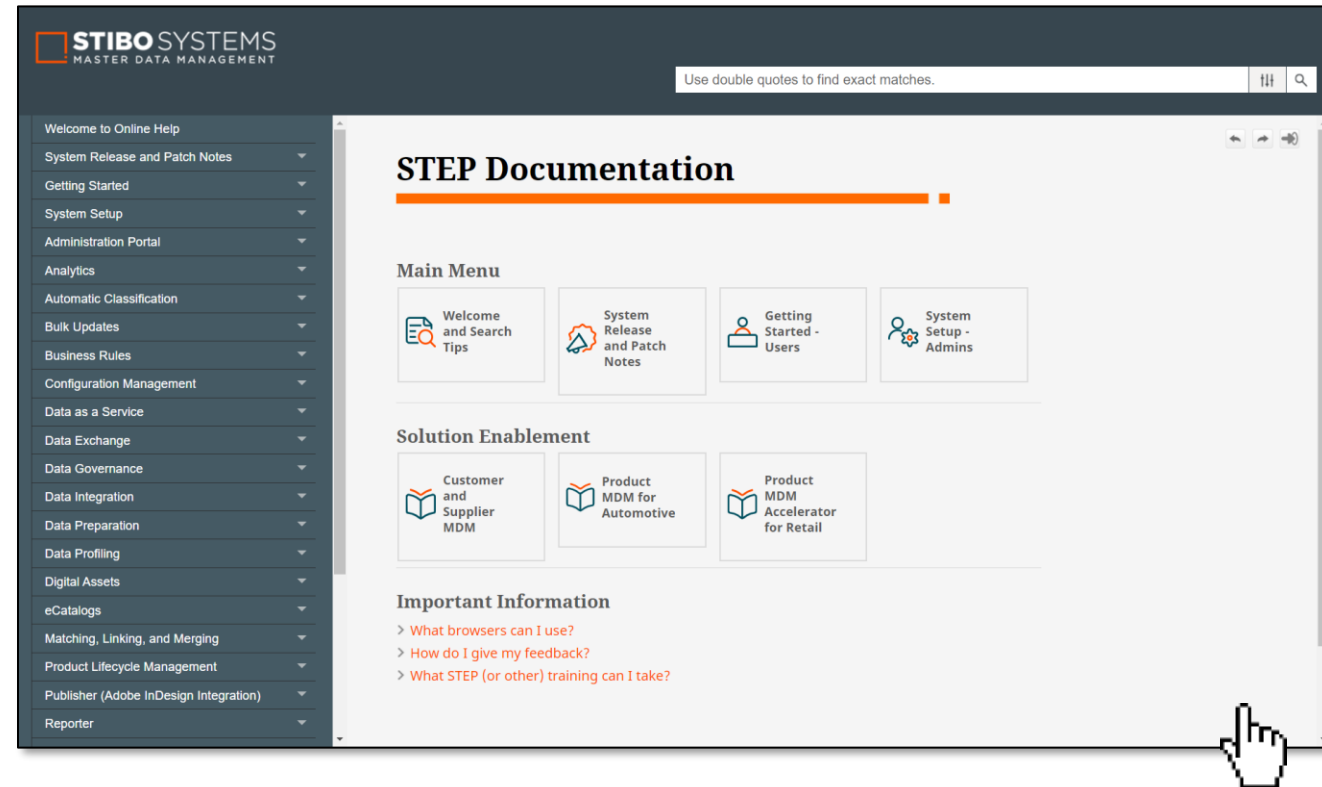
- Available as self-paced online course
- Available as virtual classroom course
- Available as a in-person classroom course



Product Documentation

With each new release comes updated [STEP Documentation](#) including

- Release Notes
- Online Help
- Enablement Topics
- Maintenance Patch Notes
- Platform and Software Support
- End-of-Life Notifications



Customer Newsletters

Don't miss out on the latest updates from Stibo Systems such as overall news, product releases, upcoming events, new capabilities, training courses and more, available in our quarterly newsletters (February, May, August and November).

Customer newsletters are sent to all Customers and no subscription is required to receive them! The last newsletter was sent on [August 29](#) and if you did not get it, please make sure to check your spams or reach out to your Account Manager.

Upcoming newsletters are scheduled for [November 21](#), [February 27, 2024](#) and [May 28, 2024](#). Save the dates!

STIBO SYSTEMS
MASTER DATA MANAGEMENT

MDM NEWSLETTER

August 2023

STEP release 2023.3 - Update and timeline

On August 25, we shared the **2023.3 Release Preview Deck** giving some initial insights into the contents of the new release. This deck, and all other release information, can be found on your dedicated [2023.3 Release Community Page](#). If you don't have community access, please reach out to your account manager.

On September 27, you can join the **2023.3 Release Overview Webinar** for a deeper dive into the major capabilities, improvements and benefits of the new STEP release.

[Save your seat](#)

How would you like your release info?

Communicating a new release the right way is important. Over the years, we have tried different styles and methods of sharing release information with you.

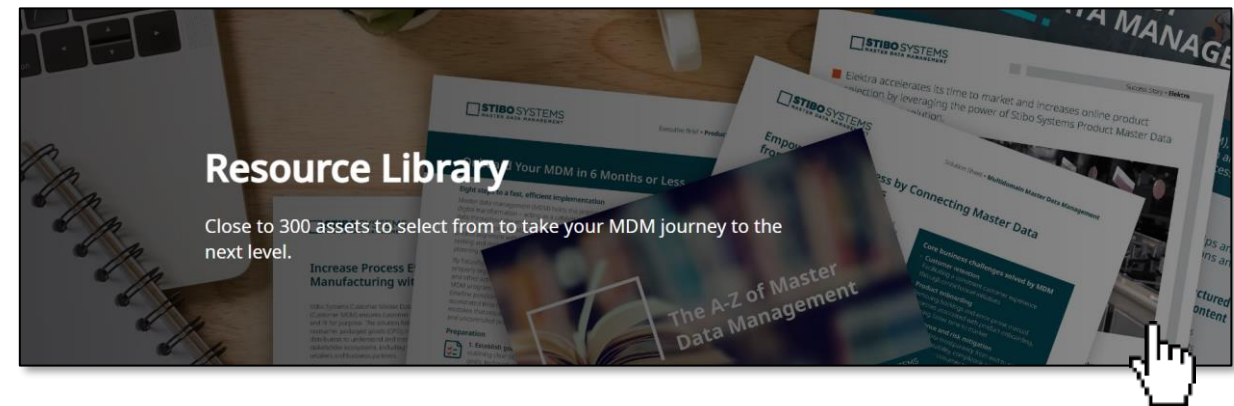
As we're transitioning into our new quarterly release cycle, we want to revise and improve the way we communicate release information to fit your needs and routines. But we can't do this without your valuable feedback so please take 5 minutes to answer this short, 11-question, satisfaction survey.

[Take the survey](#)

Resource Library

Events, Communities, Academy trainings, Product Documentation, Newsletters... If you're still hungry for more content, please check out our [Resource Library](#).

Browse hundreds of assets by topic (AI, SaaS, ROI, ...), industry (Manufacturing, CPG, Retail, ...), content type (success stories, videos, white papers, ...), request your personalized ROI report and take your MDM journey to the next level!



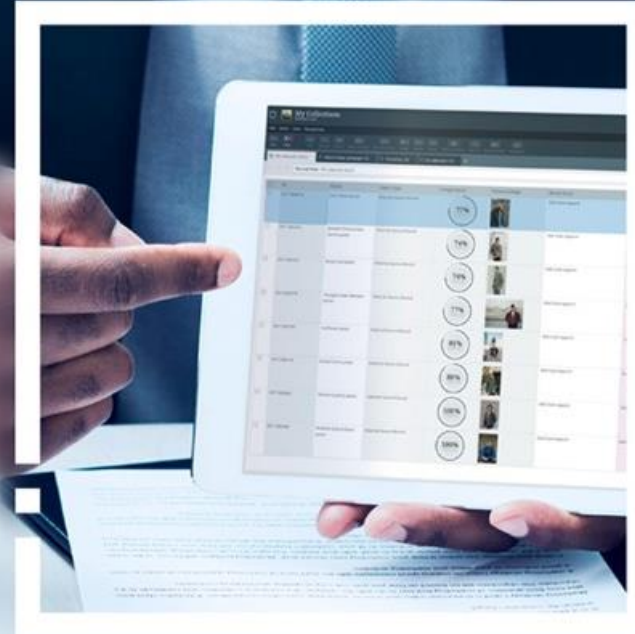
Benefits of Upgrading

When was the last time I upgraded? What version am I currently running on? Is my version still supported*? Why should I upgrade?

If you are looking for good reasons to upgrade, please find below a few pointers so you don't miss out! And remember, upgrades are made easy with SaaS!

- Get the latest and greatest to **stay ahead of your competition** – update to outdate
- **Improve the user experience and increase both productivity and efficiency** – take advantage of new capabilities and enhancements
- **Stay current** with releases for security and supportability – stay up to date with third-party application versions, latest industry standards and more
- **Support new business initiatives** – best option for expanding the use of the solution and increasing business value
- **Benefit from improved system performances** – bug fixes and enhancements make for an evermore reliable product

*Support for 9.3 ended November 1, 2022. Support for 10.0 ended May 1, 2023. Support for 10.1 ends December 1, 2023. Support for 10.2 ends May 1, 2024.



2023.3 Release Activities

As part of the release process, [Product Showcases](#) have been delivered. These sessions allow for a deeper dive in our solution both from a business and technical standpoint.

The Product Showcase recordings are available to watch from this deck and can also be found on our [Online Community's 2023.3 Release Page](#)*.

*Community access is required to watch these recordings.



2023.3 Release **Highlights** - Looking for more info? Click on the titles!



Configuration Management **MDM PLATFORM**

Delivering the first phase of an end-to-end configuration management solution that is intuitive, reliable and which fully supports continuous development needs



Deletion Optimization **MDM PLATFORM**

Optimizing deletion operations (use of background processes, user feedback, deletion options) to improve overall system performance and user experience



Enhancement Requests **PRODUCT MDM, MDM PLATFORM**

Continuously adapting to the changing needs of the market and of our customers with more than 50 ERs delivered in 2023.3

Certified Translation Connector **PRODUCT MDM**

Certified integration to Lionbridge APIv2 ensuring a stable integration, improved workflow and job status

Faceted Search for CMDM **CUSTOMER, SUPPLIER, LOCATION MDM**

Delivering a consistent cross-domain search experience enabling users to interact with data in an efficient manner



Optimized Central Authorship **CUSTOMER, SUPPLIER, LOCATION MDM**

Introducing a new data container editor supporting address typeahead, multivalued attributes and rich text for improved user experience and efficiency

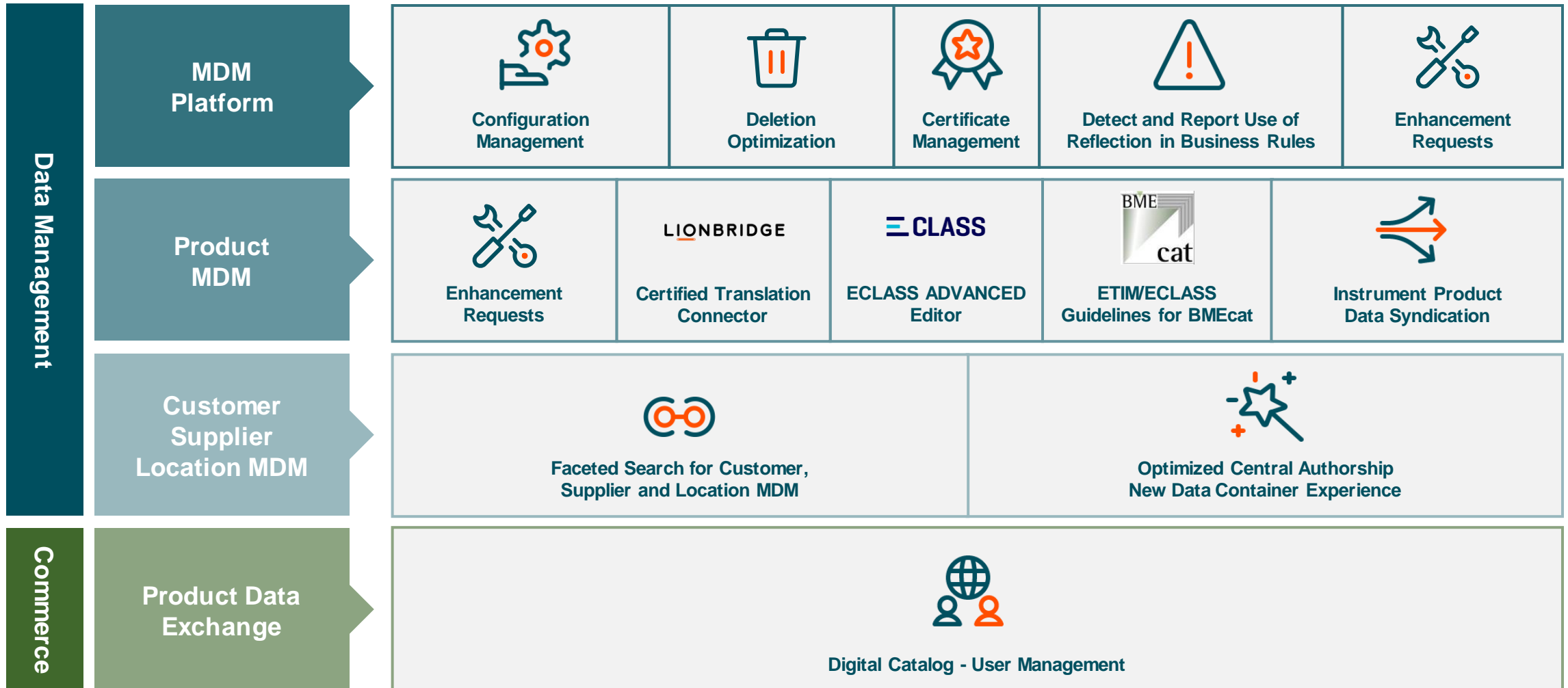


Digital Catalog **PRODUCT DATA EXCHANGE, PRODUCT MDM**

Extending and solidifying the Digital Catalog offering to support user management and catalogs in multiple languages



2023.3 Release Initiative Map - Looking for more info? Click any tile!



Kay Magnuson Jensen
Director, Product Management



MDM Platform

MDM Platform

1

Configuration Management Across Environments

2

Deletion Optimization

3

Certificate Management

4

Detect and Report Use of Reflection in Business Rules

5

Enhancement Requests

Configuration Management Across Environments

Customers must be able to transfer subsets of configurations between environments in a predictable and accurate manner to support dynamic development processes

@ADMIN,
@DEVELOPER

Our customers have expressed a need to manage configurations between systems, including a way for Administrators and Developers to track changes to configurations (data model, workflows, business rules, etc.) on one STEP system and to merge these changes onto another STEP system.

With 2023.3, we are delivering the first phase of creating a standard, safe and predictable way to transport STEP configurations between systems with more improvements coming in future releases. In this first release we are focusing on expansion and usability improvements of the existing change package solution. These updates include supporting more types of setups, more control over what is transferred, automated transfer of change packages between systems, an optional export of change packages to Git to allow for tracking changes in an external version control system, and several other usability improvements. These improvements should significantly simplify and streamline the management of configurations across environments for STEP Developers and Administrators.

Change Package		Log		
Name	Value			
ID	CP_IntegrationUser			
Name	CP_IntegrationUser			
Status	Open			
Exported	No			
Signed	Not yet sealed			
Unique ID	cpk-b0f70c60-b7ed-4e2e-af64-4c4b2a9a68c4			
Origin	laal-saas			
Operation Mode	Full			
Default Handling	Analysis Only			
Change Package Description				
Primary Items (1)				
Item	Current	Included	Instruction	
OutboundExportUser	0 minutes	2023-07-11 10:50:11		
Secondary Items (0)				
Items Required For Transfer (10)				
Item	Current	Handling	Included	Instruction
All Setup Actions	0 minutes	Analyze Only	2023-07-11 10:50:12	
All User Actions	0 minutes	Analyze Only	2023-07-11 10:50:11	
Assetpush setup actions	0 minutes	Analyze Only	2023-07-11 10:50:12	
Assetpush user actions	0 minutes	Analyze Only	2023-07-11 10:50:12	
Classification 1 root	0 minutes	Analyze Only	2023-07-11 10:50:12	
Collections	0 minutes	Analyze Only	2023-07-11 10:50:12	
Entity hierarchy root	0 minutes	Analyze Only	2023-07-11 10:50:11	
Service Users	0 minutes	Analyze Only	2023-07-11 10:50:11	
		Analyze Only	2023-07-11 10:50:11	
		Analyze Only	2023-07-11 10:50:12	
Promote item to primary				
Configuration Entity References	1 minutes	Analyze Only	2023-07-11 10:50:11	
User Information	1 minutes	Analyze Only	2023-07-11 10:50:11	

RELEASE NOTES

RELEASE VIDEO

Included in Platform

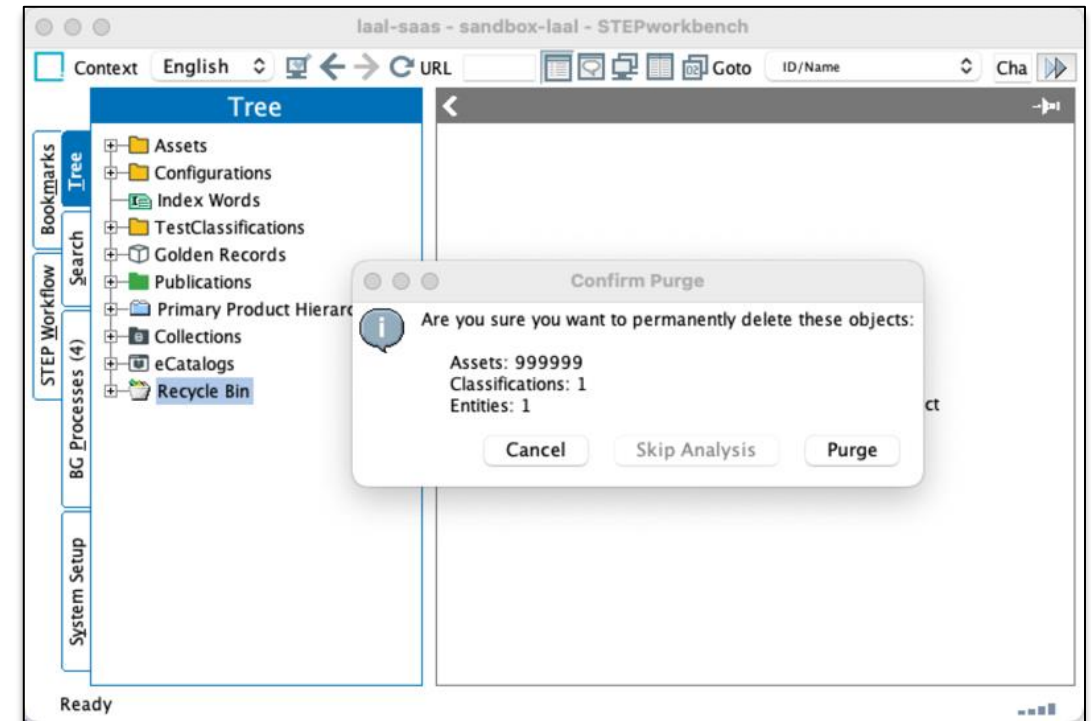
Deletion Optimization

Customers must be able to manage high volumes of data, but have observed that deleting and purging large numbers of objects can be slow or impossible in extreme cases

@ADMIN

Deletion of millions of objects on a Cassandra system can prove to be problematic both for the user executing the deletion but also for the overall system which, in some rare cases, can fail entirely.

With 2023.3, to avoid such issues, we have made several improvements to both stabilize and accelerate the deletion operations. These include the use of background processes for some deletion operations, better user feedback when deletions are occurring so progress can be monitored, adding additional options for deletion such as a force delete capability directly from the recycle bin, and we have made several optimizations to how the deletions are being carried out to improve the overall performance of these operations. These changes benefit all users, but are most relevant for STEP Administrators, Architects, and Implementation Specialists who will have increased efficiency and an improved experience when carrying out deletion operations. Many of these changes are not limited to Cassandra, meaning that Oracle implementations will also see a benefit.



RELEASE NOTES

Included in Platform

Certificate Management

Certificates are often necessary to ensure security in data feeds but their configuration and management can be difficult, leading to delays and unnecessary time spent in Support

@ADMIN

Up until today, the configuration of SSL certificates for outbound integrations required several individual steps and, often, involvement from Stibo Systems' Support team.

With 2023.3, this configuration is now fully manageable within the STEP workbench and without any system downtime. This will greatly simplify the Administrators' work and streamline the overall integration management process, providing a better experience for Administrators and maximum uptime for end users.

Please note that this solution only supports the configuration of SSL certificates for outbound integrations. Support for configuration of inbound mTLS will be planned for inclusion in a future release.

SSL Client Certificates - HTTPS Connections					
HTTPS Connections					
Trusted Certificates					
Subject Common Name	Certificate Alias	Valid Until	Updated By	Updated Date	
productapi	product api	Wed Apr 23 2025 02:01	Mark Janssen	Thu Jul 13 2023 16:04	
*.hub.com	integration hub	Mon Apr 13 2015 01:59	Mark Janssen	Thu Jul 13 2023 16:04	
Add Trusted Certificate					
Tested URLs					
URL	Certificate Alias	Test Result	Tested By	Tested Date	
https://papi.westeurope....	product api	OK	Mark Janssen	Thu Jul 13 2023 16:07	
https://api.westeurope.do...		Server Not Trusted	Mark Janssen	Thu Jul 13 2023 16:07	
https://anypoint.mulesoft....		OK	Mark Janssen	Thu Jul 13 2023 16:07	
https://integration.hub.com	integration.hub.com	OK	Mark Janssen	Thu Jul 13 2023 16:07	
Add URL					
mTLS Client Certificate					
Download Client Public Key					

RELEASE NOTES

Included in Platform ←

Detect and Report Use of Reflection in Business Rules

Using reflection to access non-public APIs can lead to performance problems, inconsistencies in the database, and problems with future versions of STEP

@DEVELOPER

It has historically been possible to use reflection in JavaScript business rules to access non-public methods in the API. Unfortunately, this could cause inconsistency in the database, lead to performance issues, and cause unexpected problems during upgrades.

With 2023.3, checks are added to report usage of reflection in health checks, in the step.0.log, and in metrics and diagnostics. These identify the use of reflection so that you are aware of it and can implement an alternate solution using public APIs. **Please prioritize this work with your development teams to ensure smooth upgrades and optimal system health because, in a future release, the usage of reflection will be blocked.** If cases are found that cannot be implemented using existing public APIs, please submit an enhancement request so that we can consider making the necessary methods public or can assist in suggesting a viable alternative.



RELEASE NOTES



Included in Platform ←

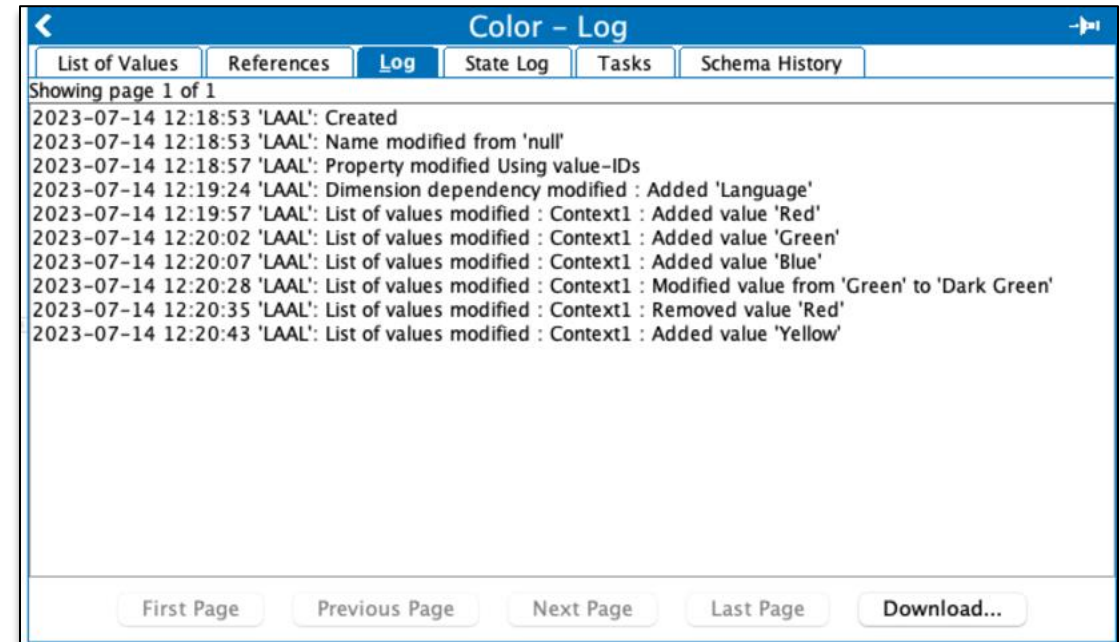
Enhancement Requests

Businesses need an MDM solution that supports them in their operational agility and which adapts to changing needs

@ADMIN,
@DEVELOPER

Enhancement Requests (ERs) allow us to continuously adapt to the changing needs of the market and our customers. Please find here some of the ERs that are delivered with 2023.3:

- We have improved change log information on value addition, maintenance and deletion when editing the values in a List of Values to provide better traceability when LOVs are modified (see screenshot). [Release Notes](#)
- The public GraphQL, JavaScript, and REST APIs have been enhanced to support several new functions to better support unique business challenges and align the capabilities across varying areas of the software. [Release Notes](#)
- We have introduced a new Gateway Integration Endpoint plugin for Google Cloud Storage that can be used for Asset Publisher and in the Cloud Storage Delivery Method, providing simplified integration management for administrators. [Release Notes](#)



Included in Platform ←

QUESTIONS, COMMENTS?

We would love to hear from you!



Kay Magnuson Jensen

Director, Product Management
Platform



Peter Sønderskov
Director, Product Management



Product MDM/PIM

Product MDM/PIM

1

[Enhancement Requests](#)

2

[Certified Translation Connector](#)

3

[ECLASS ADVANCED Editor](#)

4

[ETIM/ECLASS Guidelines for BMEcat](#)

5

[Instrument Product Data Syndication](#)

6

[Watch the Product MDM/PIM Showcase!](#)

Enhancement Requests

Businesses need an MDM solution that supports them in their operational agility and which adapts to changing needs

@ADMIN,
@BUSINESS USER

Enhancement Requests (ERs) allow us to continuously adapt to the changing needs of the market and our customers. Please find here some of the ERs that are delivered with 2023.3:

- Values for Lists of Values can now be exported and imported via Excel, making it easier to manage and maintain large LOVs (see screenshot). [See next slide for more.](#)
- You can now export Price Lists (Commercial Data) in Excel/CSV when exporting product data. This provides human-readable extracts for this combined information and supports PMDM customers who need, for example, and among other use cases, to export price data as part of ETIM and/or ECLASS extracts. [Release Notes](#)
- Available Workspaces and Contexts for Web UIs can now be controlled for users and user groups through the intersection of Global Representation Lists and GUI Settings. This allows different users to have different Contexts and Workspaces available in the same Web UI. It also improves the user experience for users who only access a subset of data. [Release Notes](#)

	A	B	C	D
1	<LOV ID>	<LOV Name>	<LOV Value ID>	<LOV Value>
2	CountryLOV	Country	AUS	Australia
3	CountryLOV	Country	BGR	Bulgaria
4	CountryLOV	Country	BHS	Bahamas
5	CountryLOV	Country	BRA	Brazil
6	CountryLOV	Country	CAN	Canada
7	CountryLOV	Country	CRI	Costa Rica
8	LanguageLOV	Language	da	Danish
9	LanguageLOV	Language	de	German
10	LanguageLOV	Language	en	English
11	LanguageLOV	Language	fi	Finnish
12	LanguageLOV	Language	fr	French
13	LanguageLOV	Language	hi	Hindi

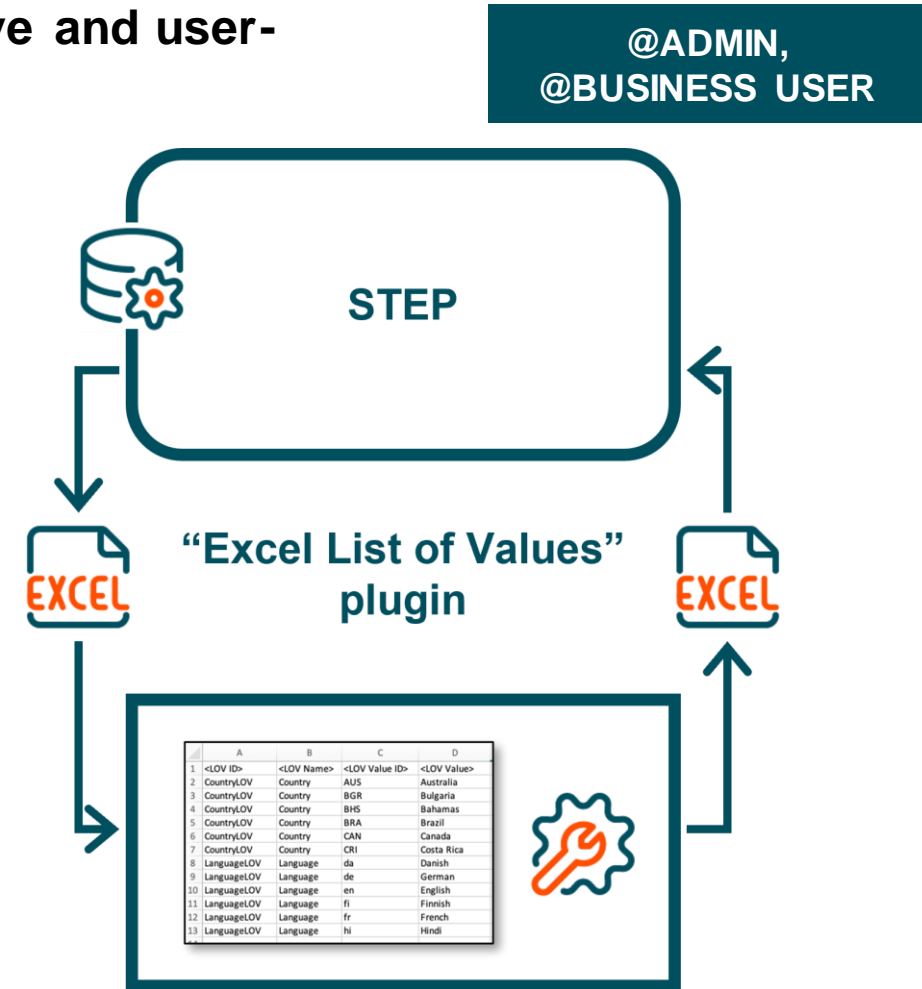
Included in Platform 

List of Values (LOV) Maintenance

Customers need to manage large lists of values in an intuitive and user-friendly manner

Up until today, LOV value maintenance outside STEP involved STEP XML, which made it harder for users to manage existing LOVs and their values.

With 2023.3, we are introducing a new Import/Export Manager format plugin called "Excel List of Values". This plugin now allows users to easily import and export their LOV values, and maintain these, in Excel. Managing these values in Excel is not only more intuitive than in XML but it will also speed up implementation and maintenance tasks.



RELEASE NOTES

RELEASE VIDEO

Certified Translation Connector

Customers using Lionbridge for product translation need a certified connector for integration with Lionbridge

@BUSINESS USER

To be able to have localized product information for diverse markets and languages, customers are using Lionbridge as translation service provider.

With 2023.3 the Lionbridge Connector has been upgraded to allow for integration to Lionbridge APIv2, the latest API provided by Lionbridge. The Lionbridge Connector has now been certified by Lionbridge, meeting requirements from Lionbridge to ensure a stable and updated integration between STEP and Lionbridge. With the certification also comes an improved workflow and job status.

Lionbridge V2 job status

All configurations	
Translation Export	0
Extract File To Translate	0
Send to LionbridgeV2	0
Waiting for Translation	5
Store Translation Result	0
Import Translation	0
Quarantine	0
Completed	2

LIONBRIDGE

RELEASE NOTES



Available with the Translation Service Integration license ←

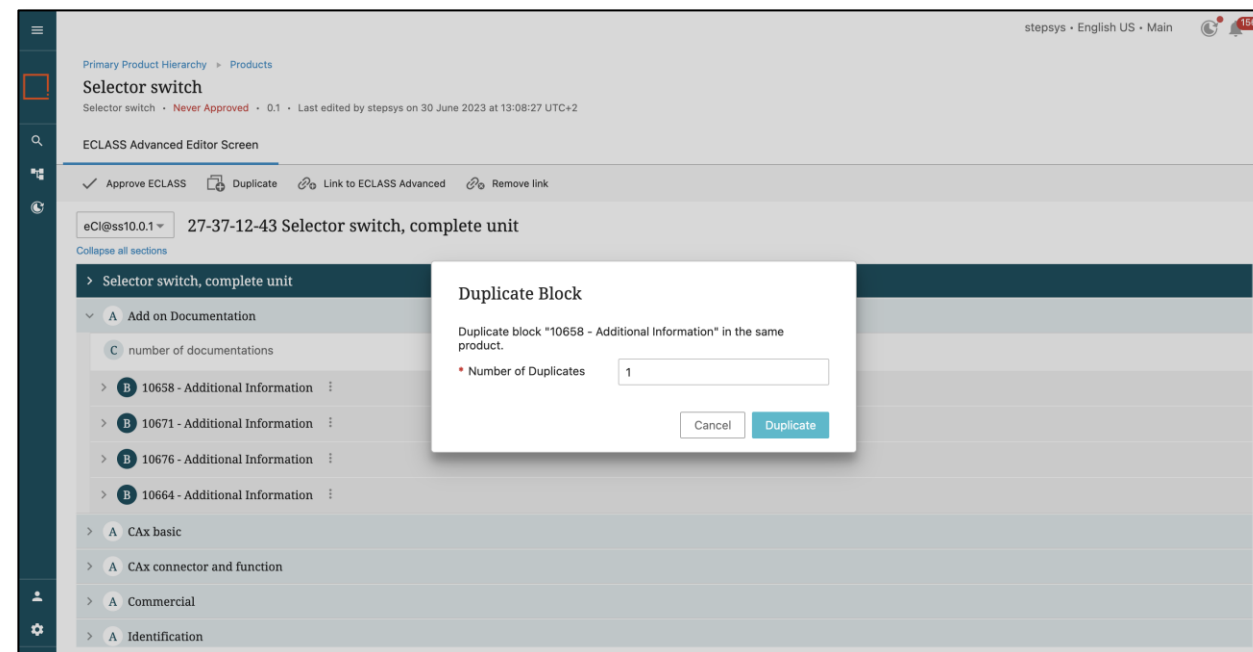
ECLASS ADVANCED Editor

Companies need the ability to have standardized data management across the entire supply chain

@BUSINESS USER

Manufacturers have a crucial need to speak the same language when it comes to describing product data in a highly complex but standardized structure to add value across the entire supply chain. ECLASS is a consortium which offers a standardized way to describe products and services and classify them.

With 2023.3, we have further improved the ECLASS ADVANCED (ECA) editor first introduced in 10.2 for faster product onboarding and maintenance and to provide users a better overall experience. When adding or maintaining products, Product Managers are now able to duplicate a block rather than having to create it manually. Product Managers can also duplicate a product linked in the ECA hierarchy. Finally, by providing a clear distinction between aspects and blocks, we are making navigation through the product hierarchy easier and more comfortable.



RELEASE NOTES



Available with the ECLASS ADVANCED license



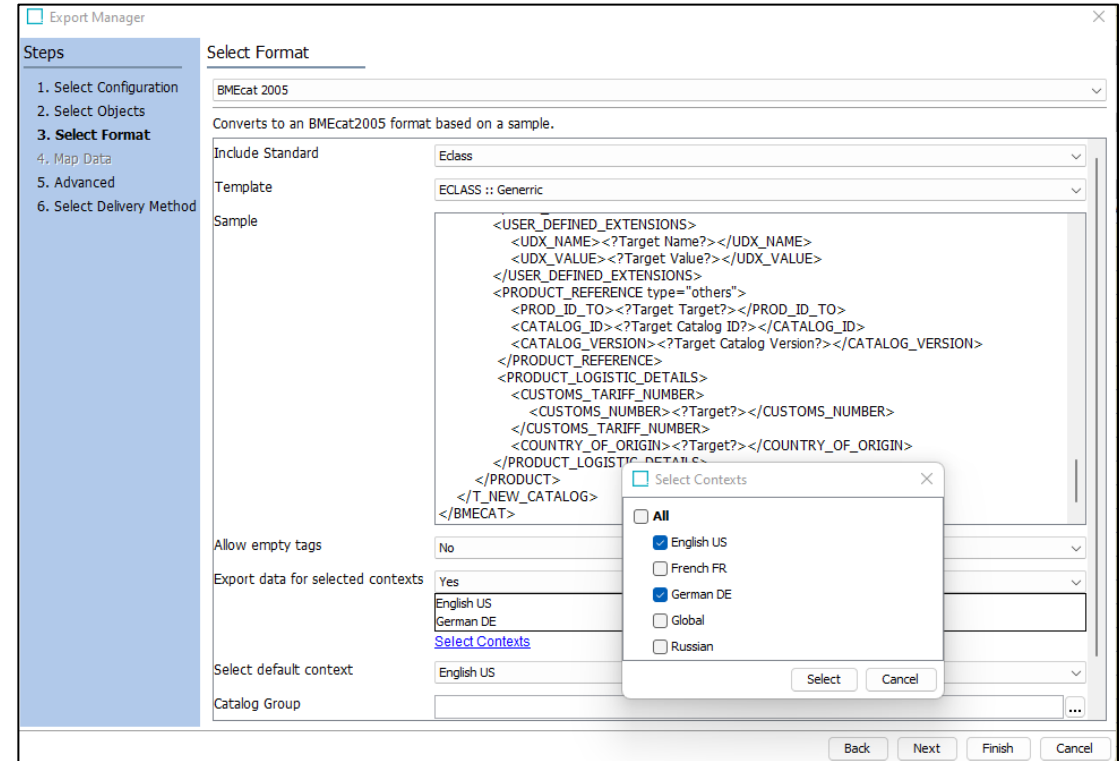
ETIM/ECLASS Guidelines for BMEcat

Manufacturers have a constant focus on efficient data exchange when importing or exporting product data

@ADMIN,
@BUSINESS USER

With progressing globalization, ever-increasing quantity of product data and constantly diminishing product lifecycles, there is a growing market requirement for quality of information, though the use of industry standards such as BMEcat.

With 2023.3, we have enhanced the BMEcat export with support for both ETIM and ECLASS guidelines for BMEcat 2005. This makes for a better and more efficient data exchange by preventing customization, accelerating time-to-market and improving the overall user experience.



RELEASE NOTES



Available with existing STEP licenses
(3rd party BMEcat, ECLASS, ETIM licenses required)



Instrument Product Data Syndication

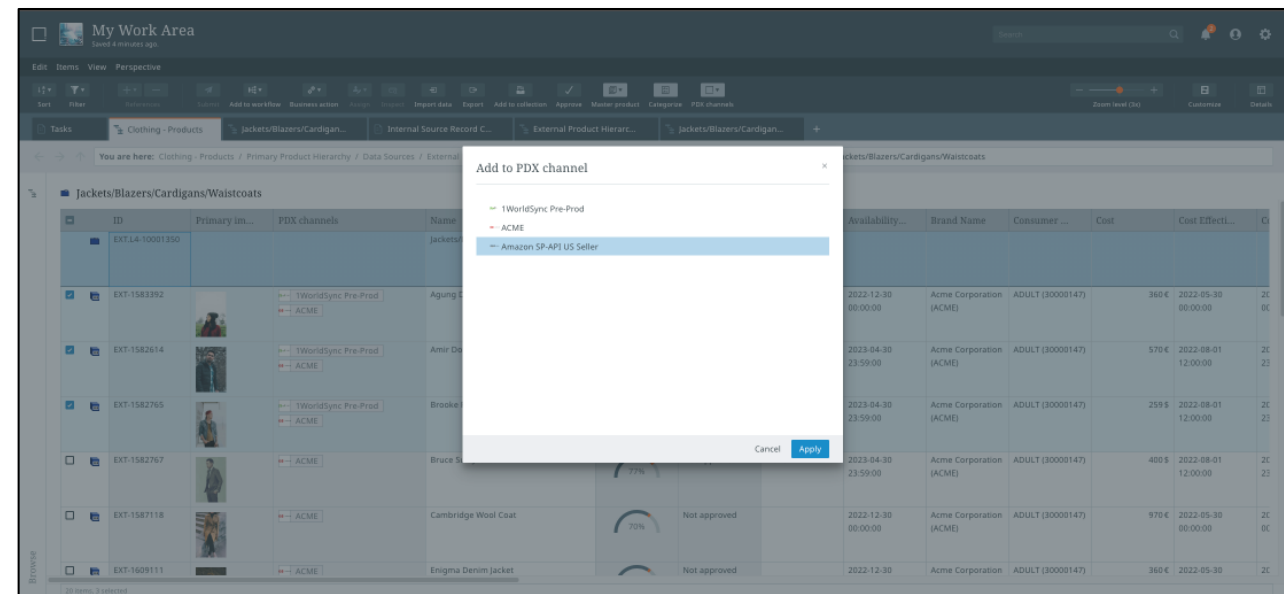
Manufacturers need to have a productized solution that meets the needs and requirements of the industry supported by a modern and intuitive UI/UX

@BUSINESS USER

Manufacturers need a way to send selected product data to selected receivers (retailers, distributors and data pools). More granularly, Category Managers need to be able to select and maintain the receivers of the product.

With 2023.3, we are addressing these needs in Instrument using our Product Data Exchange (PDX) solution, enabling Category Managers to select/deselect the desired PDX target channels (aka data receivers), for one or more selected products, at any point in time of the product's lifecycle. Moreover, users can use existing data quality checks in order to support a seamless dataflow to PDX recipients.

This is a joint initiative between the PMDM and PDX teams.



RELEASE NOTES



The PDX Syndication license is required
(Limited availability) ←

Watch the Product MDM/PIM Showcase!

For a detailed deep dive into the PMDM enhancements, click on the picture below.



QUESTIONS, COMMENTS?

We would love to hear from you!



Peter Sønderskov

Director, Product Management
Product Data (PMDM/PIM)
Product Domain



Jignesh Patel
Director, Product Management



Customer, Supplier and Location MDM

Customer, Supplier and Location MDM

1

[Faceted Search for Customer, Supplier and Location MDM](#)

2

[Optimized Central Authorship – New Data Container Experience](#)

3

[Watch the Customer & Supplier MDM Showcase!](#)

Faceted Search for Customer, Supplier and Location MDM

There is a market need for a powerful and easy to use search interface for non-expert end users

@BUSINESS USER

When Faceted Search was first introduced it did not support Customer, Supplier and Location domain use cases (entities, data containers) and was only relevant for PMDM customers, making for an inconsistent search experience across domains.

With 2023.3, we are extending the Faceted Search capability with support for entities and data containers, and thus support searches for Customer, Supplier and Location data. This delivers a consistent and user-friendly experience while enabling users to find Products by their associations to Suppliers, Customers and Locations and find Products by their supplemental product data such as reviews. Moreover, it allows searching within and across domains therefore supporting true multidomain use cases.

This is a joint initiative between the CMDM and PMDM teams.

ID	Legal Name	SIC Code	Phone Number	Main Address Street	City	Zip	State	
<input checked="" type="checkbox"/>	8992216	Eden Gods Finer Things	5411	9017749086	2090 Farrington St	Memphis	38109-2104	TN
<input checked="" type="checkbox"/>	8992234	Ef Market Inc	5411	9014586693	2450 Summer Ave	Memphis	38112-2520	TN
<input type="checkbox"/>	8992237	EFM Grocery	5411	9014586693	2450 Summer Ave	Memphis	38112-2520	TN
<input checked="" type="checkbox"/>	8992267	El Manantial	5411	9013805370	3209 Coleman Rd	Memphis	38128-6553	TN
<input type="checkbox"/>	8992294	El Rancherito	5411	9012663761	5070 Raleigh Lagrange Rd	Memphis	38134-5223	TN
<input type="checkbox"/>	8992300	El Ranchito	5411	9013231016	3908 Macon Rd	Memphis	38122-2319	TN
<input type="checkbox"/>	8992303	El Ranchito Mexican Products	5411	9013231016	3908 Macon Rd	Memphis	38122-2319	TN
<input type="checkbox"/>	8992366	Ellendale Grocery	5411	9013821469	7811 Us Highway 70	Memphis	38133-2002	TN
<input checked="" type="checkbox"/>	8992369	Ellendale Tiger Marrr 3	5411	9013820216	7804 US Highway 70	Memphis	38133-2082	TN
<input type="checkbox"/>	8992393	Emilio's Enterprises Inc	5411	9013682570	2751 Getwell Rd	Memphis	38118-1849	TN
<input type="checkbox"/>	8992396	Emilio's Grocery	5411	9013653015	2757 Getwell Rd	Memphis	38118-1849	TN
<input type="checkbox"/>	8992399	Emilios Grocery	5411	9013653015	2757 Getwell Rd	Memphis	38118-1849	TN
<input type="checkbox"/>	8992402	Emilios Grocery	5411	9013682570	3877 Winchester Rd Ste 6	Memphis	38118-6055	TN
<input type="checkbox"/>	8992486	Exlines' Foods	5411	9013585593	3160 Corner St	Memphis	38127-1325	TN

RELEASE NOTES

RELEASE VIDEO

Please refer to your Account Manager



Optimized Central Authorship – New Data Container Experience

Complexities in data structures weigh on B2B party data authoring

@BUSINESS USER

Business users are challenged in creating or updating B2B Customer or Supplier Master Data due to complexities in ensuring that the data they enter is valid coupled with a high number of data entry tasks.

The current data container editor limits the end users ability to author and maintain master data in a fast and efficient manner, whilst adherence to the required data validation standards was limited.

In release 2023.3 a new data container editor is introduced underpinned by optimal user experience concepts with streamlined data entry supporting full value controls framework and typeahead 3rd party data entry (address typeahead on data containers) ensuring improved efficiency, accuracy and quality of data that is entered enabling users to centrally author and maintain master data within MDM in an fast and efficient manner.

The screenshot displays a data entry form for a 'Main Address'. The current address is '301 Avenue U, Garden City, NY, 11530-6700, United States'. Below the main address field is an 'Address Search' dropdown menu. The search term 'Avenu' is entered, and the dropdown shows a list of suggestions for 'Avenue U' in various locations, including Garden City NY, Brooklyn NY, Wilmerding PA, West Palm Beach FL, Birmingham AL, Bogalusa LA, Galveston TX, Dickinson TX, and Houston TX. Each suggestion includes the number of addresses associated with that location.

Address Search	Suggestions
Avenu	Avenue U, Garden City NY 11530 - 100 Addresses
	Avenue U, Brooklyn NY - 7110 Addresses
	Avenue U, Brooklyn NY 11229
	100 Avenue U, Wilmerding PA 15148 - 13 Addresses
	Avenue U, West Palm Beach FL 33404 - 250 Addresses
	Avenue U, Birmingham AL - 2040 Addresses
	Avenue U, Bogalusa LA 70427 - 400 Addresses
	Avenue U, Galveston TX - 1411 Addresses
	Avenue U, Dickinson TX 77539 - 100 Addresses
	Avenue U, Houston TX 77011 - 510 Addresses

RELEASE NOTES

RELEASE VIDEO

Included in Platform



Watch the Customer & Supplier MDM Showcase!

For a detailed deep dive into the CMDM enhancements, click on the picture below.



QUESTIONS, COMMENTS?

We would love to hear from you!



Jignesh Patel

Director, Product Management
Customer Domain, Supplier Domain,
Location Domain



Søren Lundtoft
Director, Product Management



Product Data Exchange

Product Data Exchange

1

[Digital Catalog - User Management](#)

2

[Watch the Product Data Exchange Showcase!](#)



Digital Catalog - User Management

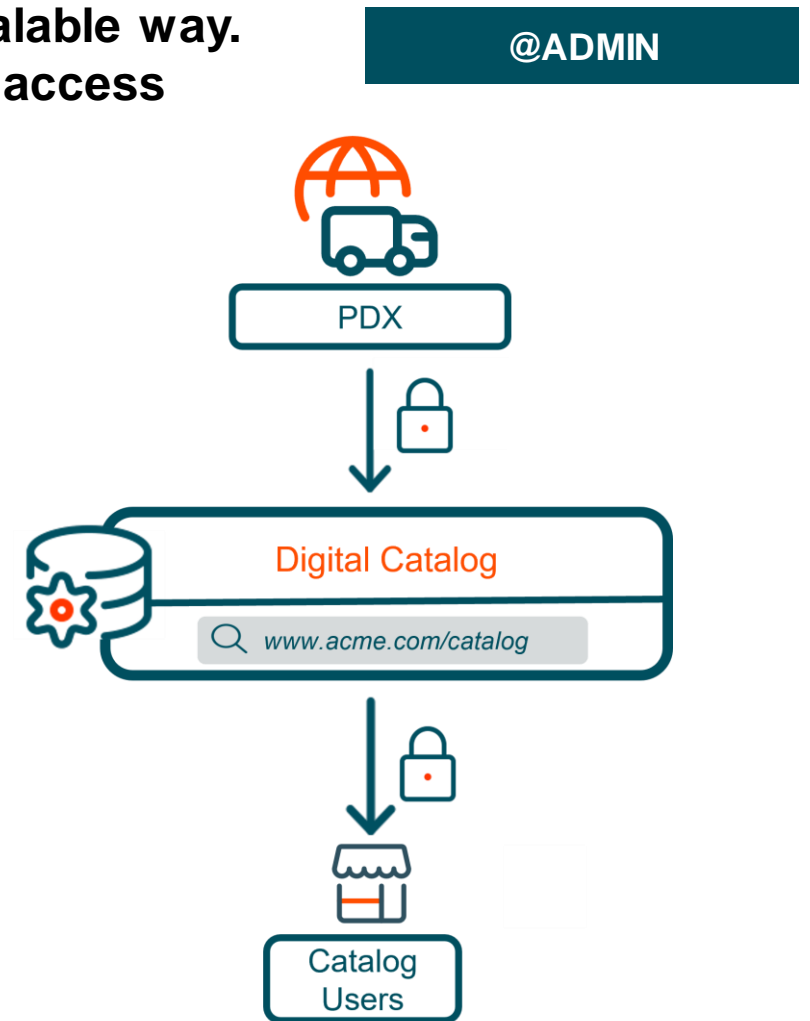
Suppliers need the capability to manage access to catalogs in a scalable way. Retailers need to be able to invite other members of their team and access product data in the UI or API in a self-service manner.

With 2023.3, we are providing suppliers with the ability to easily share their products with a variety of individuals. Suppliers are now able to see who has accessed their catalogs to see engagement from their business partners. They are also able to control and prevent access to the catalog, to perform maintenance around the product assortment or data model for example, providing a more secure and efficient way to share their products. Finally, partners are able to leverage new product querying capabilities in the Digital Catalog API, on their own, for a true self-service experience.

Overall, we are extending and solidifying the Digital Catalog offering to support user management and catalogs in multiple languages.

RELEASE NOTES

RELEASE VIDEO



Available with the Digital Catalog license ←

Watch the Product Data Exchange Showcase!

For a detailed deep dive into the PDX enhancements, click on the picture below.



QUESTIONS, COMMENTS?

We would love to hear from you!



Søren Lundtoft

Director, Product Management
Commerce

Product Data Exchange (PDX)
Product Experience Management (PXM)



Looking back...

11.2 and 11.1 Highlights

Previous Releases

1

[11.2](#)

2

[11.1](#)

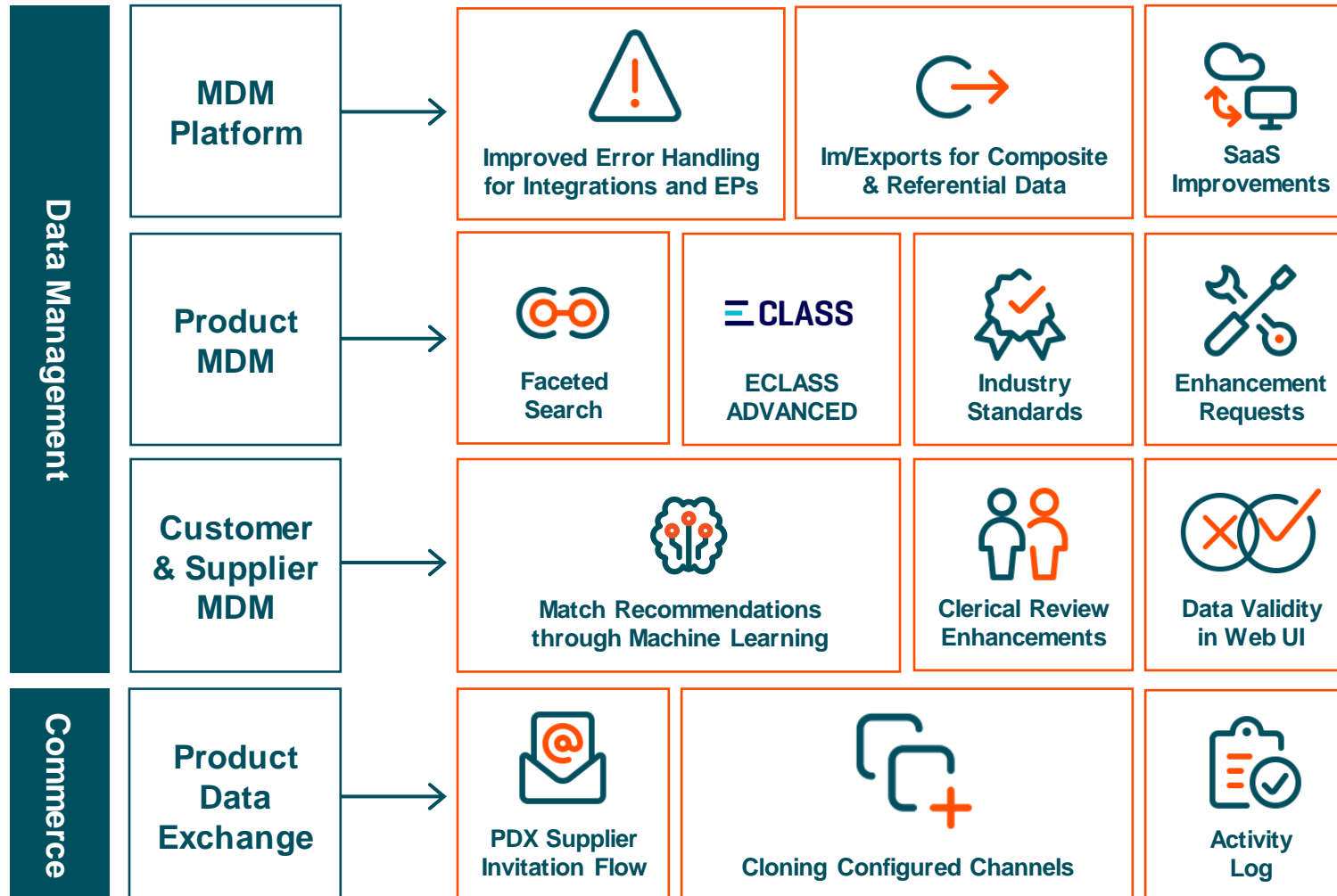
*** READ THE 11.2 RELEASE DECK ***

11.2 Release Initiative Map - Looking for more info? Click any tile!



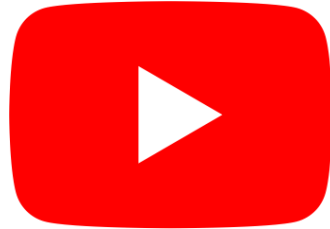
*** [READ THE 11.1 RELEASE DECK](#) ***

11.1 Release Initiative Map - Looking for more info? [Click any tile!](#)



Social Networks

Click the logos below and follow us on our social networks!



One more thing...

Please answer our satisfaction survey!

Spreading the word around a new release involves a lot of work from many departments and people within the Stibo Systems organization.

Along the years, we have shared different types of documents and tried out different styles of presentation to find the most efficient way to reach you, and to provide you the most comfortable experience when you consume our release content.

As we're transitioning into our new quarterly release cycle, we want to revise and further improve the way we communicate release information, so you get the most out of it, quarter after quarter. But we can't do this without you and we need your valuable feedback so please take 5 minutes out of your day to answer this short, 11-question, satisfaction survey.

Don't do it for us, do it for you!

[I want to take the survey!](#)

**Stay tuned for 2023.4, coming
December 2023...**



BETTER DATA.
BETTER BUSINESS.
BETTER WORLD.