



RELEASE NOTES

2023.3 (11.3)-MP1

February 2024 (updated March 11, 2024)

Table of Contents

- Table of Contents** 2
- 2023.3 (11.3) Release Notes** 5
 - New: Quarterly Releases 5
 - Upgrade Guide 6
 - Academy and Community Resources 6
 - Installation Recipe 7
- 2023.3 (11.3) Upgrade Guide** 8
 - Use of reflection in JavaScript business rules will be disabled 8
 - OIEP STEPXML Splitter post-processor changes 8
 - Support removed for 'Website' legacy objects - customer action required before upgrading 9
 - New object type icons available 9
 - Start Page display based on user privileges for SaaS environments 9
 - BMEcat updates 10
 - WebSphere receiver and delivery methods are renamed 10
 - Displaying Context and Workspace per user in Web UI 10
 - Support, platform, and system admin information 10
 - New features incorporated via 11.2 (2023.2) maintenance patches 10
- Configuration Management Improvements** 12
 - Additional types of objects supported in change packages 12
 - Automated transfer functionality 13
 - Change package usability improvements 13
- Faceted Search Enhancements** 15
 - Elasticsearch version support update with required upgrade 15
 - Added support for entities in Elasticsearch 15
 - Added support for data containers in Elasticsearch 15

- Customer MDM and Supplier MDM Enhancements**17
 - New Attribute Control Type Rules17
 - Optimized central authorship through new Globally Configured Unfolding Data Container18
- Data Exchange Enhancements and Changes**20
 - New Google Cloud Storage gateway integration endpoint option21
 - Support for updated versions of MongoDB22
 - Manage SSL certificates for outbound integration in workbench22
 - Support for latest version of IBM MQ SSL23
 - IIEP Kafka Receiver updated with access to all metadata23
 - OIEP and IIEP Kafka allows OAuth 2.0 bearer tokens23
 - New property restricts user creation with known passwords24
 - BMEcat Version Updates24
 - Improvements to ECLASS Advanced Editor Screen27
 - PDX Channels in Instrument28
- General Enhancements and Changes**29
 - Object type icon update30
 - Updates to JavaScript, REST, and GraphQL APIs31
 - New object type and icon for contexts33
 - Use of reflection in JavaScript business rules will be disabled34
 - Improved performance and usability for delete operations34
 - Support removed for 'Website' legacy objects35
 - SSO login extended to Admin Portal35
 - DaaS improvements35
 - Start page display based on user privileges for SaaS environments36
 - List of Values updated change log36
 - Export and import of existing LOV values using Excel37
 - Export 'Price Lists' and 'Attributes Inherited from Classification' using CSV or Excel38

New 'Fraction (No Decimal)' attribute validation base type	38
Edit 'Started by' user field in scheduled processes	38
Lionbridge APIv2 update	38
Cloud-based Audit Message Framework delivery method available for SaaS	39
New PDX Channels Context bind	39
Web UI and Instrument Enhancements and Changes	40
Visual update to Web UI homepage	40
Displaying context and workspace per user in Web UI	40
Accelerator for Retail with Instrument enhancements	41
Product MDM for Automotive 2023.3 (11.3) - 7.0.56 Release Notes	42
Announcement	42
Patch Recipe	42
Platform and Software Support Changes	43
Current Updates	43
Future Updates and End-of-Life Notifications	43
Server and client support	43
Updated: New on-premises deployment architecture	43
Baseline EOL	44
Miscellaneous Bugfixes	45
2023.3 (11.3)-MP1 Maintenance Patch Notes	55
Bugfixes	55
Patch Recipe	69

2023.3 (11.3) Release Notes

These release notes describe the new, enhanced, and changed features provided with the release. Some changes may require action, so review these notes carefully. These notes complement the Stibo Systems Enterprise Platform (STEP) Online Help, which includes in-depth information on previously existing and new system functionality, including detailed explanations and step-by-step instructions for use, when appropriate.

Release highlights:

- **Configuration Management** – Delivering the first phase of an end-to-end configuration management solution that is intuitive, reliable, and fully supports continuous development needs (Platform)
- **Deletion Optimization in Cassandra** – Optimizing deletion operations (use of background processes, user feedback, and deletion options) to improve overall system performance and user experience (Platform)
- **Faceted Search for Customer MDM** – Delivering a consistent and relevant cross-domain search experience enabling users to interact with data in an efficient manner (Customer MDM, Supplier MDM, and Location MDM)
- **Optimized Central Authorship** – Introducing a new data container editor supporting address typeahead, multivalued attributes, and rich text for improved user experience and efficiency (Customer MDM, Supplier MDM, and Location MDM)
- **Certified Translation Connector** – Certified integration to Lionbridge APIv2 ensuring stable integration plus improved workflow and job statuses (Product MDM)
- **Digital Catalog** – Extending and solidifying the Digital Catalog offering to support user management, customized UI, and faceted search (PDX and Product MDM)

As always, Stibo Systems is continuously adapting to the changing needs of the market and our customers by implementing various enhancement requests in all of our releases.

Information regarding the enhancements above and a wide variety of other enhancements and changes are included in this release note set.

Note: Product Data Exchange (PDX) release notes and online help are available in the PDX solution. Once logged into the tool, click Help Center > Documentation using the left navigation panel. Documentation will open in a new tab.

New: Quarterly Releases

The 2023.3 (11.3) release is the beginning of a new quarterly release cycle. Releases will now be identified by year and quarter to align with this new cadence. The first four digits (2023) indicate the year of the release.

The last digit (3) indicates the calendar quarter. The next releases will therefore be named 2023.4, 2024.1, 2024.2, and so on. Quarterly releases are supported for one year with no maintenance patches planned for the release cycle.

More releases mean a shorter time to market so our customers can take advantage of the new capabilities faster. It also means faster market feedback leading to an improved overall quality of the solution. By releasing more frequently, we can be more responsive to changing market conditions and quickly enhance our solution to best fit your needs. With this shorter release cycle and automated updates (first applicable to our SaaS v2 customers), Stibo Systems aims to make upgrades seamless so that our customers always benefit from our latest technology.

Upgrade Guide

In addition to the individual release notes, upgrading customers should read the 2023.3 (11.3) Upgrade Guide. This guide provides information that existing customers need to know prior to upgrading. This includes actions required for deprecated components and unsupported functionality.

The Upgrade Guide includes information about actions that need to be taken prior to upgrading.

At the time of your installation, read the hotfix release notes for 2023.3 (11.3)—if applicable—to understand the full scope of changes for the 2023.3 (11.3) release and subsequent patches.

Important: Some functionality described within these notes is controlled via licenses and/or component installations and may not be available on your system. Questions should be directed to your Stibo Systems account manager or partner manager.

Academy and Community Resources

Stibo Systems Academy

Stibo Systems Master Data Management (MDM) Academy offers customer and partner hands-on training options to expand your knowledge on Stibo Systems MDM solutions. Information regarding our certification programs and specific classes can be found on our website: <https://www.stibosystems.com/services-support/mdm-academy>.

Stibo Systems Communities

All customers and partners are encouraged to join their respective Stibo Systems Communities to collaborate with other users. These release notes and other release materials, including videos, are also available within each Community.

Customers: <https://www.stibosystems.com/online-community>

Partners: <https://www.stibosystems.com/partners/partner-community>

Installation Recipe

The baseline (and additional components) can be installed using these commands:

```
./spot --upgrade=step:2023.3
```

For on-premises systems, refer to the SPOT Program documentation for more information, including how to use the SPOT `--upgrade` command to also find compatible components that can be added at the same time as the baseline patch (`--upgrade=a11`) in the SPOT Program topic of the System Administration Guide found in Downloadable Documentation. For assistance, contact Stibo Systems Technical Services. For SaaS systems, contact Stibo Systems. For customers that have custom add-on components and/or if Stibo Systems Support is deploying your system upgrades and patches, submit an upgrade request via the Support Portal.

This document is intended for use by active Stibo Systems Enterprise Platform (STEP) users and partners and describes the above and other new functionality and improvements in greater detail. It does not serve as a replacement for the Online Help, which includes additional information on previously existing and new system functionality, as well as more detailed explanations and step-by-step instructions for use, when appropriate.

2023.3 (11.3) Upgrade Guide

Summary

There are many benefits to keeping your current system upgraded. And, remember that upgrades are made easy with SaaS.

- Get the latest and greatest software to stay ahead of your competition
- Take advantage of new capabilities and enhancements to improve the user experience and increase both productivity and efficiency
- Stay current with releases for security, supportability, third-party application versions, latest industry standards, and more
- Support new business initiatives, which allows for opportunities to expand the use of the solution and increase business value
- Benefit from improved system performances

Customer action may be required. Before upgrading the platform and its add-on components to 2023.3 (11.3) from an earlier version, customers should be aware of certain system changes. The list that follows may not be comprehensive; however, along with the full release note set, it provides a starting point for upgrade evaluation.

For on-prem deployed systems, it is always recommended to use the latest released version of SPOT (regardless of the current STEP version in use). If upgrading via the --upgrade command, using the latest SPOT version is required.

Details

Use of reflection in JavaScript business rules will be disabled

In JavaScript business rules, reflection has been used to access non-public methods in the API. Since reflection can be a security risk and can potentially lead to performance issues and unexpected issues during upgrade, it will be disabled in a future release. With the current release, a new scheduled healthcheck identifies business rules that use reflection and a warning with the text 'Attempted to call reflection API...' is written to the step.0.log. To prepare for reflection being disabled, rewrite the reported rules to use publicly available methods. If the needed functionality is not public, use the customer support portal to create an enhancement request to make the functionality public. For more information, refer to the General Enhancements and Changes release note.

OIEP STEPXML Splitter post-processor changes

The STEPXML Splitter logic used for publishing STEPXML to a version control system (VCS) has been changed. Instead of using a collection to package the objects, now, a change package is used and a new folder structure is in place below each published change package, which differs from previous functionality.

To eliminate confusion, consider using a new branch when publishing change packages from 2023.3 (11.3). For details, refer to the Configuration Management Improvements release note.

Support removed for 'Website' legacy objects - customer action required before upgrading

In workbench, objects of the legacy object type 'Website' enabled customers to publish STEP data downstream, often to a website. The 'Website' object publication functionality was implemented using a workspace to hold data approved for publishing or tracking published data in files. **With release 2023.3 (11.3), support is removed for 'Website' objects, and STEP cannot start if they exist. Therefore, before upgrading to 2023.3 (11.3), customers must manually delete 'Website' objects and any related workspaces.** For details, refer to the General Enhancements and Changes release note.

New object type icons available

Updated object type icons are available with this release. All updated icons are of the Scalable Vector Graphics (.svg) file type. SVG images retain image fidelity when resized and are easier to create, edit, and maintain.

Customers upgrading to 2023.3 (11.3) should be aware:

- Object type icons that were set by a user (i.e., object types for which an icon displays in the 'Icon' field for the object type object) can either be retained or updated manually by selecting a new icon from the set of new icons.
- Object type icons that are system defaults and do not have an icon displaying in the object type object will be automatically updated to one of the new SVG icons.

In the event upgrading customers wish to adopt updated object type icons for the object types not automatically updated, they may edit the icon by right-clicking the 'Icon' field for the object type and selecting the desired icon from the 'Select Icon' dialog that displays.

It should be noted that once an icon has been swapped, the old icon is no longer available. For additional details, refer to the General Enhancements and Changes release note.

Start Page display based on user privileges for SaaS environments

Administrators can update the Start Page so that link categories are hidden if the user does not have the correct privileges assigned to them. This feature is only applicable for SaaS environments in which the user logs in with Keycloak. The 'About STEP' and 'STEP Documentation' links are not controlled through user privileges; therefore, the 'Resources' section will continue to display for all users. Administrators should review the privileges if they do wish to make changes upon upgrade. For more information, refer to the General Enhancements and Changes release note.

BMEcat updates

A number of updates to BMEcat, BMEcat 2005, and BMEcat 2005.1 have been made to support industry standards for ECLASS and ETIM when exporting data. For more information, refer to the Data Exchange Enhancements and Changes release note.

WebSphere receiver and delivery methods are renamed

IBM has renamed their 'IBM WebSphere MQ' product to 'IBM MQ.' To reflect that name change, the OIEP delivery method 'IBM Websphere MQ SSL Delivery' option and the IIEP receiver method 'IBM Websphere MQ SSL Receiver' have been renamed as 'IBM MQ SSL Delivery' and 'IBM MQ SSL Receiver.' For more information, refer to the Data Exchange Enhancements and Changes release note.

Displaying Context and Workspace per user in Web UI

Users and user groups can now control the available Workspaces and Contexts through the intersection of Global Representation Lists and workbench-specified GUI Settings, allowing different users to have different contexts and workspaces available in the same Web UI and improving the user experience for users who only access a subset of data. These restrictions will be reflected in the overall context and workspace selections in the Global Navigation Panel, as well as in components throughout the Web UI where users have a context or workspace selection option, such as Multi Context, Multi Language, and Multi Workspace Screens.

If the user does not have GUI Settings applied, they will not notice a difference in their available options. In implementations where GUI Settings are used, administrators should review existing privilege setups to ensure that end users will have the expected access following upgrade.

Support, platform, and system admin information

Baseline desupport information is as follows:

- In 2023, support for 10.1 ends December 1st.
- In 2024, support for the 10.2 release ends May 1st, support for 2023.3 ends September 30th, and support for 10.3 ends November 1st.

Additional Platform and Software Support information as well as information about future changes to deployment architecture for on-premises and private cloud customers can be found in the Platform and Software Support Changes topic in the 2023.3 (11.3) Release notes.

Important: Prior to upgrade, customers should be aware of any maintenance patch updates that came out in earlier releases. The projects below were covered in the 11.2 (2023.2) Maintenance Patch Notes.

New features incorporated via 11.2 (2023.2) maintenance patches

Below is a list of new features or important announcements introduced / published within the 11.2 (2023.2) release cycle:

- New 'Quarantine' State for Lionbridge Translations (MP2)
- New 'Self referencing' parameter in the Onboarding Mapping Details Screen (MP1)
- PDX Channel Configurator UI extension (MP1)

Configuration Management Improvements

Summary

Change packages support data governance by allowing configuration management across environments in a Development, Test, Acceptance, and Production (DTAP) environment, and can be used alone or in conjunction with an integration to Git for version control. With 2023.3 (11.3), both change packages and the Git integration have been updated to begin to provide a more holistic solution for managing configuration changes across environments. The improvements that have been made as part of the 2023.3 (11.3) release are outlined below and are described in the Details section that follows.

- Support for **additional types of objects in change packages** lessens the manual configuration required in target systems. Additionally, security while creating users for processes is now improved with a system-generated user password.
- **Automated transfer functionality** between systems and to an external version control system (VCS) reduces the manual work that was previously required. Change packages and their included objects now include text fields to communicate instructions for target system installation. This is especially useful in cases where the configuration is not fully supported in change packages to provide a single source of truth or 'checklist' for the full set of changes.
- Change packages are now supported in the **external VCS integration** so administrators can segregate sets of changes in a dynamic folder structure using a template, supporting multiple deliveries within one branch instead of replacing everything in the branch with each update.
- Improved **usability** when creating, analyzing, sealing, importing, and installing change packages minimizes errors and makes change packages easier and more reliable to work with. Dependent-object analysis is also optimized for relevancy, and a new default handling mode provides users with complete control of the configuration objects to be installed.

These improvements streamline the management of configurations across environments for STEP developers and administrators. Customers can expect additional improvements in the overall configuration management solution over the next several releases.

Details

Additional types of objects supported in change packages

Creating a change package on a source system now supports many additional types of objects from both the System Setup and Tree tabs, including individual hierarchy nodes, import / export configurations, collections, and other data objects that often serve configuration functions. This improvement increases the number of configuration items that can be transferred via change packages and streamlines overall configuration management operations.

In addition, users created via change packages, for example, for integration endpoints or event processors being transferred, are assigned a system-generated password upon installation on the target system. When passwords are managed in STEP, the 'Forgot Password' option on the Web UI login page provides password reset, or an administrator can assist the password changes in workbench. If passwords are managed in an external identity provider, it is not necessary to reset the password in STEP.

For information on all types of objects available for change packages, refer to the Change Packages section in the Configuration Management documentation.

Automated transfer functionality

To reduce the manual work previously associated with change packages:

- Sealing a change package (which indicates it is ready for export) now generates an event. The change package event provides a way to automate data exchange between a source system and a target system using event-based integration endpoints. Additionally, an OIEP can be set up to export the change package contents to a VCS in STEPXML format. Working with a VCS allows for the tracking and comparing of different versions of the same change package, the option to edit business rules externally from STEP, and provides a consistent way to define changes for automated system-to-system transfer.
- Teams working on different projects or domains can use custom attributes on the change package to organize them within a repository branch, automatically using a directory template and macros for key aspects of the change package. For example, change package ID or the system where the change package was sealed and/or originated could be used to identify the data on the repository branch. Below the change package, the Primary and Secondary flipper grouping (visible in workbench) is maintained. Subfolders for different objects improve the organization of STEPXML files, grouping them by type. This allows administrators to avoid overwrites by exporting subsets of the configuration independently, without needing to export the entire configuration.
- On a target system, change packages can be automatically imported via a REST-based integration endpoint (IIEP) to directly receive change packages from an upstream system, or to directly update objects from a VCS in STEPXML format.
- The Change Package Git Delivery method allows integration with popular repositories, supporting the HTTPS (token-based) or the SSH (file-based) access methods for GitHub, GitLab, and Bitbucket. The delivery option now toggles access to the appropriate fields when either HTTPS or SSH is selected for the access method, making the required and irrelevant fields clear.

For information on the available automated transfer functionality, refer to the Configuration Management topic, the Version Control System Integration section, and the Change Packages topic, all in the Configuration Management documentation.

Change package usability improvements

These change package improvements allow users to control an installation by explicitly choosing which items to include, while using the remaining items for impact analysis. This full control ensures reliable transfers without unintended objects being installed.

- Creating and modifying change packages include new 'drag and drop,' multi-select, and filtering functionality.
- The 'Items Required for Transfer' list and the 'Possibly Impacted Items' list have new functionality for promoting items to the 'Primary Items' list and show fewer distantly related objects.
- Default handling now only includes objects explicitly selected by the user, with dependent objects noted for impact analysis but not installed when transferred.
- The dependent-object analysis used to determine the items on the 'Items Required for Transfer' list and the 'Possibly Impacted Items' list now includes significantly fewer objects. This means that reviewing the list of dependencies requires less effort and that the file size for a new change package is smaller. Updating items in an existing change package recalculates the dependencies, which also results in a smaller file size.
- On the target system, some items require manual configuration once installed. To communicate notes for installation, on the source system, each object added to the change package can now have a user-defined instruction attribute that is transferred with the change package. The ability to add objects without supported installation, along with the new instruction attribute eliminates the need for an external document to describe manual changes necessary to support the installation process.
- User-defined description attributes can be added to change package object types to communicate information relevant to the entire change package, like general instructions or prerequisites. These description attributes can also be used when integrating with a version control system (VCS), like GitLab, GitHub or Bitbucket, to automate a consistent folder structure within a branch of a repository.
- The STEPXML splitter post-processor used with an OIEP integration to a VCS has been changed. It no longer replaces the entire content of a repository branch with the current set of files where the objects were included from a collection. Instead, change packages are used to house configuration changes for a feature set and many change packages can be exported to the VCS branch over time. The branch can automatically have sub directories built using a template with macros to generate the organizational structure, with the change package ID at the end of the path template, storing all of the change packages. STEPXML and JSON files are contained within the change packages, and are grouped by the Primary and Secondary flippers, then by type of object. These files do not contain the context and workspace, however, they can be added manually for ad-hoc imports or can ideally be used with an IIEP where the context and workspace can be defined for imports. When using the new features in 2023.3, consider creating a new branch in the repository.

For more information, refer to the topics within the Change Packages section and the Version Control System Integration section in the Configuration Management documentation.

Faceted Search Enhancements

Summary

The following enhancements to STEP's faceted-search functionality have been made as part of the 2023.3 release and are described in the Details section:

- Elasticsearch **version support update**.
- Elasticsearch now supports **entities**, making the solution more consistent across various solutions.
- Elasticsearch now supports **data container** data for products and entities. In addition, the Web UI search screen has been optimized for displaying data container data.

Details

Elasticsearch version support update with required upgrade

STEP now supports Elasticsearch version 8.8.2 and higher. Improvements made in this version will make it easier to maintain for future enhancements.

For more information, refer to the On-Premises Initial Setup for Elasticsearch topic in the System Setup documentation and the 2023.3 (11.3) Upgrade Guide.

Added support for entities in Elasticsearch

Elasticsearch can now display entity data. Such as with other available object super types, entity object types can now be selected during configuration, indexed by Elasticsearch, and the resulting data can then be displayed on a search screen in Web UI. Previously, only product, classification, and asset data could be used with Elasticsearch.

For more information, refer to the Creating and Maintaining an Elasticsearch Configuration topic in the System Setup documentation.

Added support for data containers in Elasticsearch

Elasticsearch can now display data container data for products and entities. The attributes and reference attributes of a data container can be selected during configuration and indexed by Elasticsearch. The resulting data can then be displayed on a search screen in Web UI, which now includes additional configuration options for displaying data container attributes and references.

For more information, refer to the Creating and Maintaining an Elasticsearch Configuration topic in the System Setup documentation.

Once a set of data container attributes have been configured as facets on a search screen, users will be able to search for entities based on these attribute values. To account for the inclusion of data containers, the Web UI Search Screen has received cosmetic adjustments, including a dividing line that should help the user differentiate between attributes that belong to different data containers.

sandbox • stepsys • US-eng • Main 🔄 206

Search configuration 📄

Super Type ▾ Object Type ▾ Path ▾ Approval Status ▾ Last Revision Created Date ▾ First Revision Created Date ▾ Clear Search

Select all	Sorting	Display	Actions	Legal Name	Employee Size	Phone Phone Number	Main Address City	Street	Zip	State
<input type="checkbox"/>										
<input type="checkbox"/>				Eddies Superfoods	0	7319252131	Savannah	2109 Wayne Rd	38372-2237	TN
<input type="checkbox"/>				Eden Gods Finer Things	0	9017749086	Memphis	2090 Farrington St	38109-2104	TN
<input type="checkbox"/>				Edgemont Food Market	0	4236399522	Greeneville	1102 E Church St	37745-6226	TN
<input type="checkbox"/>				Eds Corner Store	0	9314241280	Pulaski	2169 Elkton Pike	38478-8763	TN
<input type="checkbox"/>				Eds Grocery Inc	0	4238877600	Englewood	P.O. BOX 339	37329-0339	TN
<input type="checkbox"/>				Edwards Country Market-Kitchen	2	9319624024	Winchester	1112 Williams Cove Rd	37398-2739	TN
<input type="checkbox"/>				Edwina Grocery	0	4236232425	Newport	1280 Highway 73	37821-6110	TN
<input type="checkbox"/>				Ef Market Inc	0	9014586693	Memphis	2450 Summer Ave	38112-2520	TN
<input type="checkbox"/>				EFM Grocery	0	9014586693	Memphis	2450 Summer Ave	38112-2520	TN
<input type="checkbox"/>				Eighteenth Street IGA Market	1	8655247813	Knoxville	307 18th St	37916-1922	TN

For more information, refer to the Search Screen Search Configuration topic in the Web User Interfaces documentation.

Customer MDM and Supplier MDM Enhancements

Summary

The following enhancements have been made to the Customer and Supplier Master Data Management solution with the 2023.3 (11.3) release. These updates are outlined below and described in the Details section that follows:

- Users now have the option to apply **Attribute Control Type Rules** when configuring the display and behavior of attribute values in the Web UI. This option gives system administrators additional flexibility as it enables them to specify rules for specific attributes and apply different settings on different screens if needed.
- A new **Globally Configured Unfolding Data Container component** has been added that allows users to display data container attribute values within an expanded view on a Node Details screen and facilitates the creation and maintenance of data containers.

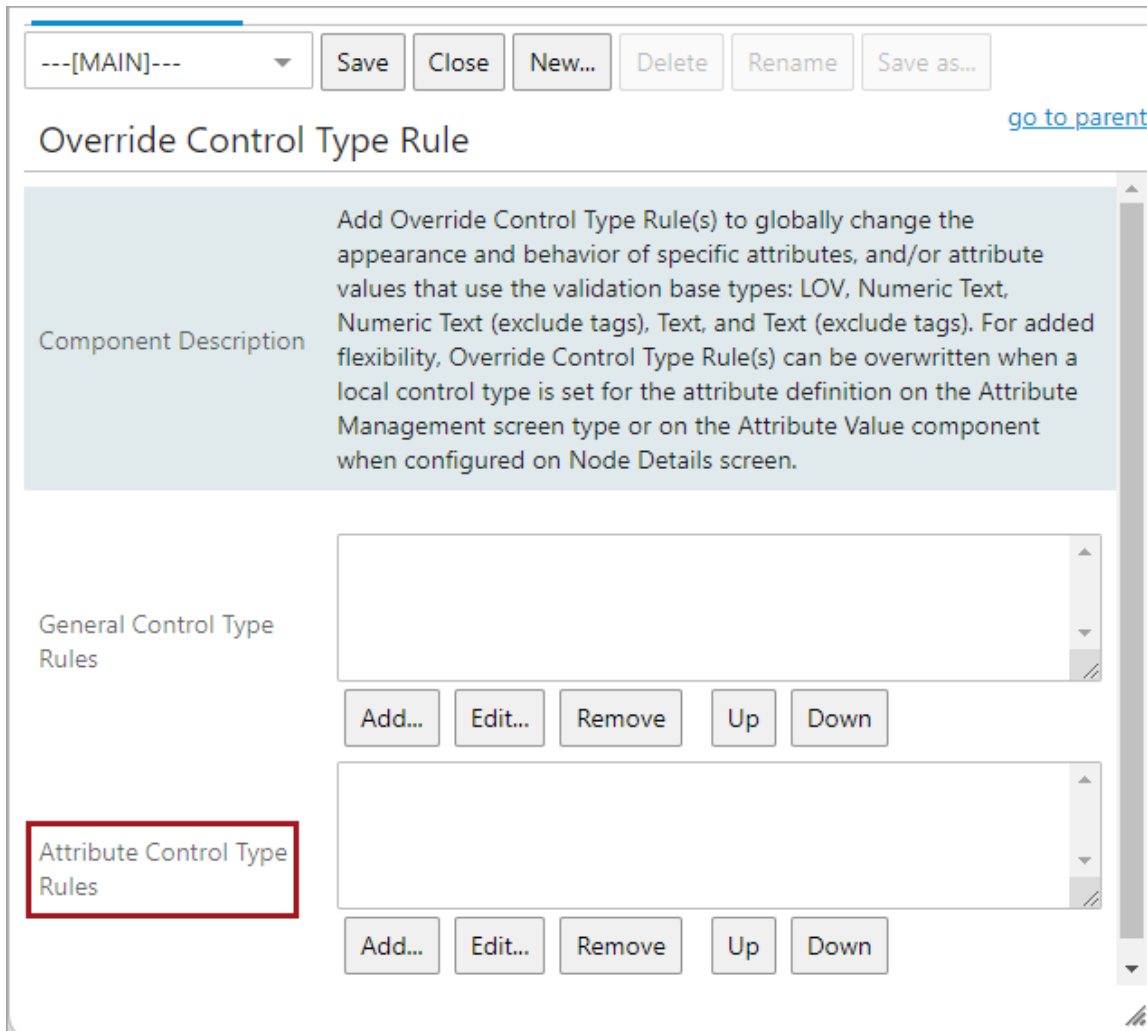
Additionally, updates to the faceted search functionality as it relates to entities and data containers have also been made with this release. For additional information on these enhancements, including a video, refer to the Faceted Search Enhancements release note.

Details

New Attribute Control Type Rules

With this release, additional flexibility has been added to the Override Control Type Rule component that gives users the option to choose between 'General Control Type Rules' and 'Attribute Control Type Rules' when configuring the display and behavior of the attribute values in the Web UI. While the first parameter option (General Control Type Rules) enables users to apply general rules for the display of validation base types, the second option (Attribute Control Type Rules) allows users to specify rules for specific attributes. The latter option enables Web UI administrators to configure the display of the validation base type of specified attributes differently and apply different control type settings on different screens if required.

The general and specific attribute control type rules are configured within the existing 'Override Control Type Rule' properties in the Web UI designer.



For more information, refer to the Override Control Type Rule topic in the Web User Interfaces documentation.

Optimized central authorship through new Globally Configured Unfolding Data Container

In the Web UI, a new Globally Configured Unfolding Data Container is now available, enabling users to display data container attribute values within an expanded view on a Node Details screen. The component facilitates the creation of new data container instances with attributes and references, and users can efficiently edit existing data containers and remove them as needed, while making use of features such as Address Typeahead and updated Override Control Type configurations, which make it easier to update and maintain data in the data containers.

* Main Address	Axel Kiers Vej 11, Højbjerg, 8270, Denmark		^
Street	Axel Kiers Vej 11		
Zip	8270		
City	Højbjerg		
State			
Country	Denmark		
* Phone	:		v
	Add		

The Globally Configured Unfolding Data Container component is added to a Node Editor child component within a Node Details screen. For more information, refer to the Globally Configured Unfolding Data Container View and Globally Configured Unfolding Data Container Component topics in the Web User Interfaces documentation.

Data Exchange Enhancements and Changes

Summary

The following enhancements to STEP's data exchange functionality have been made as part of the 2023.3 (11.3) release. These updates are outlined below and described in the Details section that follows:

- The integration options with external cloud storage providers are expanded with the new **Google Cloud Storage** connection option available for gateway endpoints. Assets can be delivered to Google Cloud Storage through the Asset Publisher event processor, and data can be delivered via the Export Manager or an outbound integration endpoint (OIEP).
- The '**Mongo Delivery (from release 4.2)**' delivery method for an OIEP is updated to support delivery to MongoDB versions 5.0 and 6.0. Support for the OIEP 'Mongo Delivery' option will be deprecated in a future release.
- **SSL certificates** for outbound integrations can now be managed in the STEP Workbench without assistance from Stibo Systems Support. Managing these certificates within STEP reduces system downtime and streamlines the overall integration management process.
- The existing '**IBM MQ SSL**' delivery and receiver (formerly named 'IBM Websphere MQ SSL') options are renamed and updated to use the latest supported versions of IBM MQ to ensure data exchange continues to function with currently supported libraries.
- The **IIEP Kafka Receiver** option is updated to allow access to metadata, which can be used in the execution report and can also be accessed in the work done by a pre-processor. This provides added logging and identification of the Kafka message processed in a specific background process.
- The existing IIEP and OIEP Kafka integrations now allow a business function to generate **bearer tokens** for use with OAuth 2.0 authentication. This allows customers to implement SASL / OAuth 2.0, an industry-standard authorization protocol, with their Kafka integrations.
- Bulk **importing users and passwords with STEPXML** is now restricted to eliminate a production system security risk that could give unintentional access to STEP. A new configuration property allows user creation with passwords defined in STEPXML to remain available on systems with low risk, such as those used for development and automated testing.
- A number of updates to **BMEcat, BMEcat 2005, and BMEcat 2005.1** have been made to support industry standards for ECLASS and ETIM when exporting data.
- The **ECLASS Advanced Editor Screen** has been enhanced with a refined user interface, streamlined functionality through toolbar access, and a new 'Duplicate' action for efficient element replication between products.
- **PDX channels** are now available in Instrument. Products can be assigned to PDX channels individually in perspectives. This allows Category Managers to check product assignments as well as tracking product syndication via PDX.

Details

New Google Cloud Storage gateway integration endpoint option

Customers who use Google Cloud Storage can now create an integration from STEP via a new gateway integration endpoint (GIEP) plugin. This new plugin type enables customers to integrate outbound digital assets and data maintained in STEP with their Google Cloud Storage account. Further integration with the customer's Google Cloud ecosystem is also available, for example, through storage triggers that enable publishing to Google Pub/Sub.

Gateway Integration Endpoint	Configuration	Statistics	Error Log	Status	Log						
<p>Gateway Configuration</p> <p>Gateway Plugin Type: Google Cloud Storage</p> <table border="1"> <tr> <td>> ConnectionKeyPath</td> <td>boytte-gcs-dev</td> </tr> <tr> <td>> Bucket</td> <td>boytte-gcs-dev</td> </tr> <tr> <td>> Connection timeout in seconds</td> <td>60</td> </tr> </table> <p>Edit</p>						> ConnectionKeyPath	boytte-gcs-dev	> Bucket	boytte-gcs-dev	> Connection timeout in seconds	60
> ConnectionKeyPath	boytte-gcs-dev										
> Bucket	boytte-gcs-dev										
> Connection timeout in seconds	60										
<p>Gateway Connectivity</p>											

Assets can be delivered to Google Cloud Storage via the Asset Publisher event processor. Data can be delivered by selecting the Google Cloud Storage GIEP when configuring the Cloud Blob Storage delivery method in the Export Manager or an outbound integration endpoint (OIEP). The Cloud Blob Storage delivery method has been updated to include a zip option to group and compress the content; it also allows integration with Azure Blob Storage and AWS S3 Storage.

Cloud Blob Storage - Configuration											
Outbound Integration Endpoint	Configuration	Event Triggering Definitions	Background Processes								
<p>Configuration</p> <p>Event Queue Configuration</p> <p>Output Templates</p> <p>Delivery Method</p> <p>Cloud Blob Storage Delivery</p> <table border="1"> <tr> <td>> Cloud Blob Storage Provider</td> <td>GoogleCloudStorage</td> </tr> <tr> <td>> Blob Storage file path template</td> <td>\$systemname/\$timestamp(yyyy-MM-dd_HH.mm.ss)/\$filename.\$extension</td> </tr> <tr> <td>> Zip content</td> <td>No</td> </tr> <tr> <td>></td> <td>Edit Delivery</td> </tr> </table>				> Cloud Blob Storage Provider	GoogleCloudStorage	> Blob Storage file path template	\$systemname/\$timestamp(yyyy-MM-dd_HH.mm.ss)/\$filename.\$extension	> Zip content	No	>	Edit Delivery
> Cloud Blob Storage Provider	GoogleCloudStorage										
> Blob Storage file path template	\$systemname/\$timestamp(yyyy-MM-dd_HH.mm.ss)/\$filename.\$extension										
> Zip content	No										
>	Edit Delivery										

For information on the new GIEP plugin, refer to the Configuring a Gateway Integration Endpoint - Google Cloud Storage topic in the Digital Assets documentation.

For delivery information, refer to the Asset Publisher topic in the Data Exchange documentation, the OIEP Cloud Blob Storage Delivery Method topic in the Data Exchange documentation, or the Export Manager Cloud Blob Storage Delivery Method topic in the Data Exchange documentation.

Support for updated versions of MongoDB

The 'Mongo Delivery (from release 4.2)' delivery method that is available for outbound integration endpoints (OIEPs) now supports delivery to a MongoDB version 5.0 and version 6.0. In a future STEP release, the original 'Mongo Delivery' delivery method will be deprecated and MongoDB versions older than 4.2 will not be supported.

Outbound Integration Endpoint	Configuration	Event Triggering Definitions	Backgro
<ul style="list-style-type: none"> Configuration Event Queue Configuration Output Templates Delivery Method 			
Mongo Delivery (from release 4.2)			
> Server(s)	<input type="checkbox"/> Edit Delivery Configuration		
> Raw DB prefix			
> User name	Select Delivery Method	<ul style="list-style-type: none"> Mongo Delivery (from release 4.2) Kafka Delivery Mongo Delivery Mongo Delivery (from release 4.2) Oracle AQ Delivery 	
> Password			
> Use SSL to encrypt netw	Server(s)		
> Key store location	Raw DB prefix		

For more information, refer to the Mongo Delivery Method topic in the Data Exchange documentation.

Manage SSL certificates for outbound integration in workbench

Administrators can now use the workbench to fully manage SSL certificates (mTLS and self-signed TLS) for outbound integrations without any system downtime. A new 'SSL Client Certificates' node is available in the System Setup tab that provides full visibility into all configured certificates and their expiration, offers the ability to test if a secure connection to a certain remote URL is possible, and can be used to directly import certificates from remote URLs or files. Furthermore, users can download the mTLS client public key for implementing a mutual trust for outbound integration.

SSL Client Certificates - HTTPS Connections					
HTTPS Connections					
Trusted Certificates					
Subject Common Name	Certificate Alias	Valid Until	Updated By	Updated Date	
productapi	product api	Wed Apr 23 2025 02:01	User J	Thu Jul 13 2023 16:04	
*.hub.com	integration hub	Mon Apr 13 2015 01:59	User J	Thu Jul 13 2023 16:04	
Add Trusted Certificate					
Tested URLs					
URL	Certificate Alias	Test Result	Tested By	Tested Date	
https://papi.westeurope....	product api	OK	User J	Thu Jul 13 2023 16:07	
https://api.westeurope.do...		Server Not Trusted	User J	Thu Jul 13 2023 16:07	
https://anypoint.mulesoft....		OK	User J	Thu Jul 13 2023 16:07	
https://integration.hub.com	integration hub	OK	User J	Thu Jul 13 2023 16:07	
Add URL					
mTLS Client Certificate					
Download Client Public Key					

For more information, refer to the SSL Client Certificates topic in the Data Exchange documentation.

Support for latest version of IBM MQ SSL

The existing 'IBM Websphere MQ SSL Delivery' method and the 'IBM Websphere MQ SSL Receiver' option have been renamed to remove 'Websphere' in keeping with a name change by IBM. The newly named 'IBM MQ SSL Delivery' and 'IBM MQ SSL Receiver' options are updated to use the latest supported version (version 9.3.3.0) of IBM MQ.

For information on working with IBM MQ, refer to the IBM MQ SSL Delivery Method topic and the IBM MQ SSL Receiver topic, both in the Data Exchange documentation.

IIEP Kafka Receiver updated with access to all metadata

The existing Kafka Receiver option in an inbound integration endpoint (IIEP) now has access to the message metadata from ConsumerRecord. This means that all available metadata is now accessible. Customers can extend the IIEP functionality with a custom pre-processor to include additional logging and identification of the Kafka message processed in a specific background process.

For more information, refer to the Kafka Receiver topic in the Data Exchange documentation.

OIEP and IIEP Kafka allows OAuth 2.0 bearer tokens

SASL / OAuth 2.0 can now be configured for STEP with Kafka to authenticate securely via bearer tokens. With this release, a business function allows integration with the existing Kafka Receiver for inbound integration endpoints (IIEPs) and the Kafka Delivery method for outbound integration endpoints (OIEPs). The

business function handles the OAuth authentication and returns a HashMap containing the Bearer Token and other details.

This functionality requires the following new `sharedconfig.properties` entries:

- `Kafka.Delivery.[OIEP_ID].ExtraDriverOptions` - to indicate the OIEP ID.
- `Kafka.Receiver.[IIEP_ID].ExtraDriverOptions` - to indicate the IIEP ID.
- `stibo.authentication.function` - to set the JavaScript business function ID.
- `security.protocol` - to indicate either SASL_PLAINTEXT (while testing) or SASL_SSL (in production) for the SSL transport layer.

For details on configuration, refer to the Kafka Receiver topic and the Kafka Delivery Method topic in the Data Exchange documentation.

New property restricts user creation with known passwords

Importing new users via STEPXML has allowed including an initial known password, which is useful during development and testing. However, in a production system, it exposes a security risk since access to the STEPXML file also gives access to STEP via the specified usernames and passwords. Now, by default, passwords provided in a STEPXML import file are ignored on import and instead, a temporary password (not known to anyone) is created. Temporary passwords must be reset by the user or by the administrator if STEP manages passwords.

To resolve the security risk in production systems and to follow the recommended practice, the new case-sensitive `Import.Users.PasswordIgnored` property in the `sharedconfig.properties` file is set to 'true' by default. For development and testing systems, as needed, set the property to 'false' to allow bulk creation of users with specified passwords via a STEPXML import.

For more information, refer to the Working with Users topic in the System Setup documentation.

BMEcat Version Updates

With progressing globalization, increasing quantity of product data, and constantly diminishing product lifecycles, there is a growing market requirement for information through the use of industry standards such as BMEcat.

It is now possible to export BMEcat 2005 and BMEcat 2005.1 in multiple languages and have a default language. Previously, it was only possible to correctly export in one selected language. Now, users are able to customize their exports to include proper tags for multiple context languages, as well as designate a default language. This eliminates the need for manual data entry or the use of multiple systems, and manufacturers can now easily share their product information with a wide range of partners.

Export Manager

Steps

1. Select Configuration
2. Select Objects
- 3. Select Format**
4. Map Data
5. Advanced
6. Select Delivery Method

Select Format

BMEcat 2005.1

Converts to an EclassBMECat2005ConverterPlugin format based on a sample.

Allow empty tags: No

ECLASS ADVANCED version: []

Validate XML: No

Export data for selected contexts: Yes

- English US
- French CA
- Germany DE
- Select Contexts

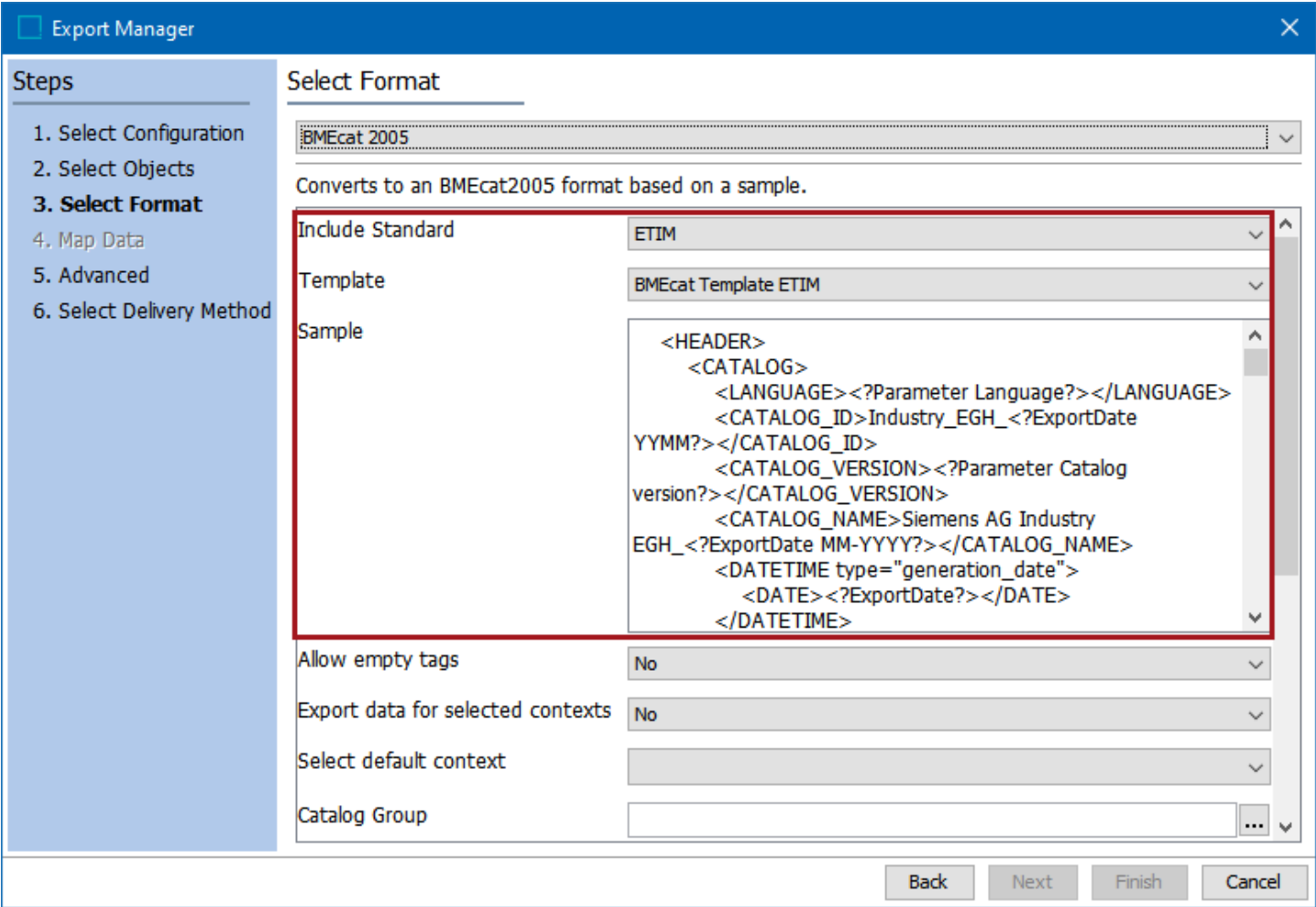
Select default context: Germany DE

FID Selection Policy: Auto enumerate blocks

Back Next Finish Cancel

```
<?xml version="1.0" encoding="UTF-8"?>
<BMECAT version="2005.1"
xmlns="http://www.bmecat.org/bmecat/2005+onto"
xmlns:xsi="http://www.w3.org/2001/XMLSchema-instance"
xsi:schemaLocation="http://www.eClass.eu/static/eClassXML/2.0/
bmecat/bmecat_2005onto.xsd">
  <HEADER>
    <CATALOG>
      <LANGUAGE>fra</LANGUAGE>
      <LANGUAGE default="true">deu</LANGUAGE>
      <LANGUAGE>eng</LANGUAGE>
      <DATETIME type="generation_date">
        <DATE>2023-09-05</DATE>
      </DATETIME>
```

Additionally, with BMEcat 2005, users are able to select a standard and an associated template to use when exporting to support industry standards for ECLASS and ETIM. Previously, users only had a generic default template provided that did not always cover all user needs, and they were not able to select a standard. This often forced users to contact support for help. Now, with the ability to create and upload as many templates as needed and associate them with standards, such as ECLASS or ETIM, users have control of how they export configured data with BMEcat 2005. This saves time by enabling users to already have templates to select from that support industry standards for ECLASS and ETIM and eliminates the need to contact support for data transformation.



BMEcat 2005 and BMEcat 2005.1 have also been aligned and improved to support industry standards for both import and export for ETIM and ECLASS. The following has been updated:

- Export of the classification hierarchy is now available in BMEcat 2005
- 'Attributes Inherited from Classification' is available for BMEcat 2005
- The Price list (term list) option is now available in BMEcat 2005.1
- The 'Self-contained' option is available in BMEcat 2005.1
- The 'Feature price' option is now available for BMEcat 2005.1

These updates allows users to serve their customers with product data that is structured uniformly, prevents customization, accelerates time-to-market, and improves data quality through the use of industry standards.

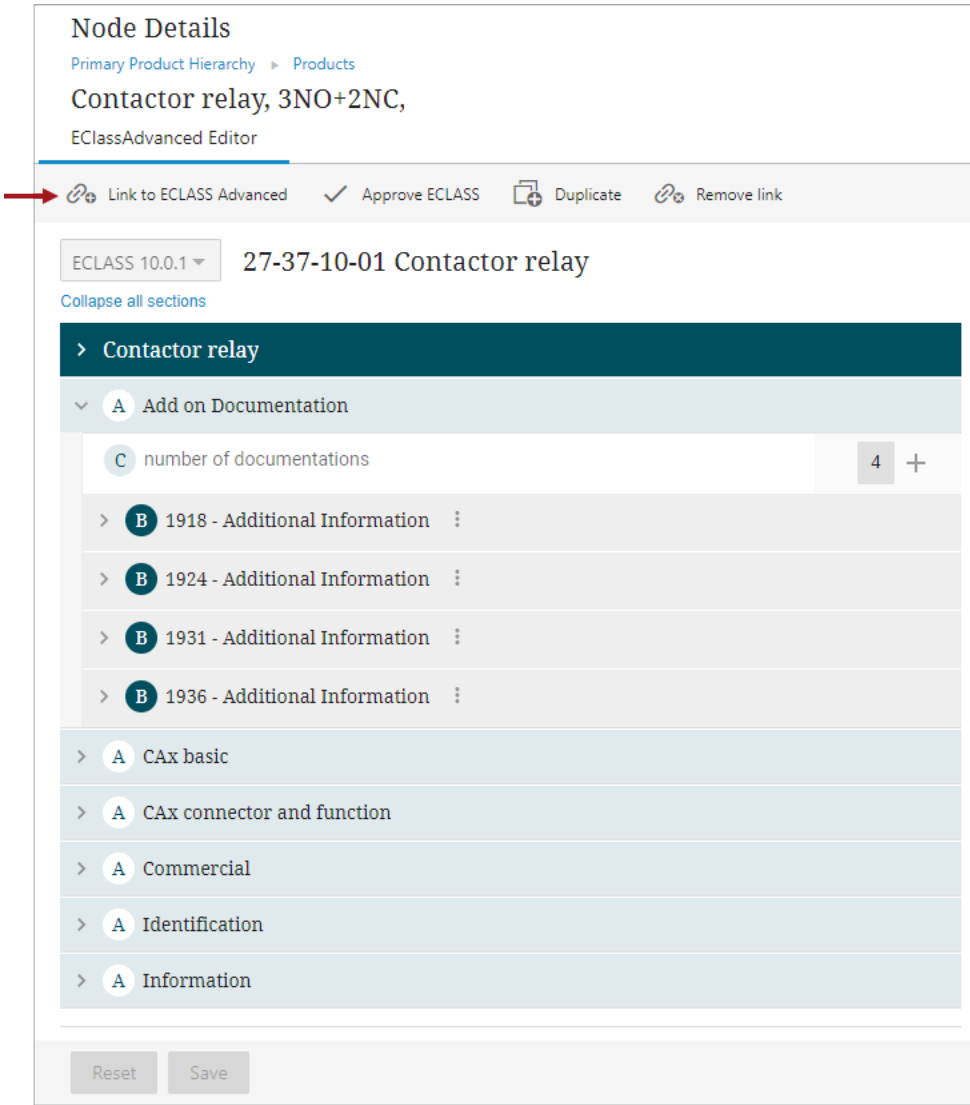
Using BMEcat functionality requires the enablement of commercial licenses. Contact Stibo Systems to begin the process of enabling a license or licenses for your system.

For more information, refer to the BMEcat Format topic, the BMEcat 2005 Format topic, and the BMEcat 2005.1 Format topic in the Data Exchange documentation.

Improvements to ECLASS Advanced Editor Screen

The ECLASS Advanced Editor Screen has undergone the following enhancements and updates:

- **Enhanced User Interface:** The UI has been updated to highlight important elements in the data model, Blocks, aspects, and cardinality attributes.
- **Functionality Consolidation:** To ensure seamless navigation and enriched usability, existing functionalities 'Remove link,' 'Approve ECLASS,' and 'Link to ECLASS Advanced' have been conveniently consolidated and are now accessible through the toolbar.
- **New functionality:** With the new Duplicate toolbar action it is now possible to duplicate either the entire product or specific aspects or block structures. This functionality can be used to duplicate internally on the products or to other products.



For more information, refer to the ECLASS Advanced Editor Screen topic in the Web User Interfaces documentation.

PDX Channels in Instrument

Instrument now allows users to view, add, and remove PDX channels for one or more products in a perspective table view. This will enable Category Managers to easily check if products are assigned to the desired PDX channels. If the products have not been assigned to the desired PDX channels, the Category Manager can add or remove PDX channels to ensure that products will be syndicated to the correct receivers via PDX. Furthermore, the PDX Channel solution in Instrument supports business processes to be executed before the actual syndication takes place. This is triggered via a Business Action that will run when channels are either added or removed.

For more information, refer to the PDX Syndication documentation. For more information on Instrument, refer to the Instrument Documentation that is included when Instrument is enabled on a system. It is located on the Start Page under Resources.

General Enhancements and Changes

Summary

The following enhancements and changes have been made as part of the 2023.3 (11.3) release. These are outlined below and described in the Details section that follows:

- An updated set of **object type icons** is now available; when selected, the icons will display for object types in the various hierarchies in both the STEP Workbench and the Web UI.
- Functionality is extended in the **JavaScript API** to add requested methods, in the **REST API** to provide requests for Gateway endpoints and deletion processes, and in the **GraphQL API** to improve search and sort capabilities.
- Individual **contexts** are now displayed as objects with a new icon in the System Setup hierarchy where they are relevant. This new format shows the relationship between contexts and dimensions / dimension points and also allows selecting individual contexts for a change package.
- A new healthcheck and log entry identifies the use of **reflection in JavaScript business rules** to assist users in identifying rules that need to be rewritten before reflection is disabled.
- STEP's ability to **delete a large number of objects** is now more stable and efficient with improved user feedback. Also, a new healthcheck reports the absence of scheduled cleanup processes that remove unnecessary data from the system.
- Support for **legacy 'Website' object types** is discontinued; customer action is required before upgrading. Outbound integration endpoints are the recommended functionality for publishing data.
- Access to the **Admin Portal** (STEP System Administration) is now available via single sign on (SSO) for on-premises hosted STEP systems using SAML.
- **DaaS improvements**, including better handling of derived events and dimension-dependent LOVs, are provided to better serve customers using the DaaS offering.
- The **Start Page** displays the links and link categories based on the user privileges for SaaS environments, eliminating screen congestion and irrelevant link categories.
- **List of Values log** is enhanced, capturing the details in a more descriptive format.
- Existing **List of Values** can be exported and imported using Excel format, which allows for easier management and maintenance of large LOVs.
- **'Price Lists' and 'Attributes Inherited from Classification'** can be exported using CSV and Excel format, providing human-readable extracts for this combined information and supporting customers who need to export price data as part of ETIM and/or ECLASS extracts.
- A new **'Fraction (No Decimal)'** attribute validation base type is available, which does not allow decimals as a value.

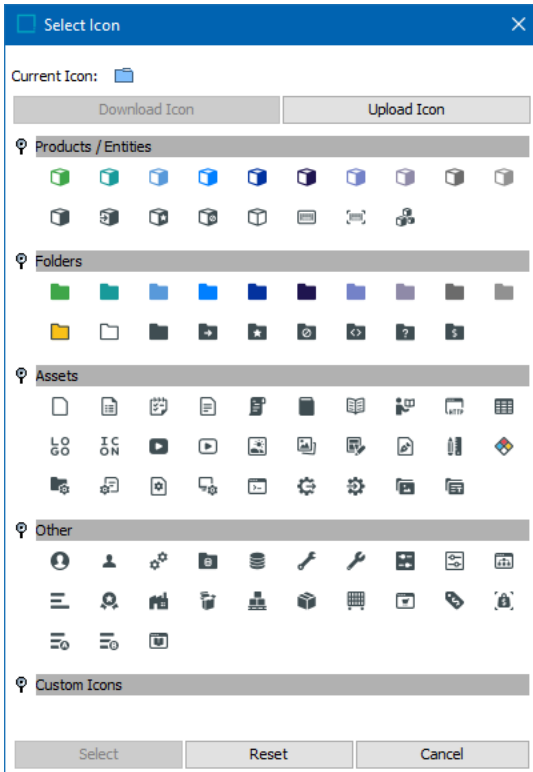
- The **'Started by' user field** can be edited in Scheduled and Queued Processes. This allows for changes to the user without the manual work of deleting existing scheduled processes and scheduling new ones, for example, when the original user is either no longer with the company or changes roles within the company.
- The **Lionbridge APIv2 Connector** has been certified by Lionbridge, meeting requirements from Lionbridge to ensure a stable and updated integration between STEP and Lionbridge. This update which also gives customers time to review and approve jobs, now has a new quarantine state before jobs are completed or archived, as well as updated execution reports.
- An **Azure SQL Database delivery method** solution is now available for Audit Message Framework (AMF) for SaaS systems.
- A new **PDX Channels Context bind** is now available for use as part of the syndication of product data from Instrument (STEP) to receivers via PDX.

Additionally, as part of continuous efforts to maintain the core of our software, this release includes fundamental updates to adopt new technologies in our database access layer. This makes it easier for us to extend and evolve our software. Enhancements are also included to ensure the continued security and supportability of the platform.

Details

Object type icon update

A bold refresh of STEP object type icons has been made available to all customers with this release. The object type icons that display throughout the STEP Workbench and the Web UI have been updated to both contemporize the visual look and feel of the STEP interfaces and to follow the principles laid out in Google's Material Design visual language. The updated icon set is displayed in the 'Select Icon' dialog, shown in the screenshot below.



New STEP implementations will automatically have the updated icons for all system object types. Current STEP customers updating to 2023.3 (11.3) will have system object type icons automatically updated with the new SVG icons if those icons have never been replaced. For object types whose icon has been replaced, users who want the new icons will need to manually swap out the old icons with the new; if no icons are swapped, the old icons will continue to display.

All new object type icons will be of the Scalable Vector Graphics (.svg) file type as images of this type retain image fidelity when reduced or enlarged, present no issues with regard to aspect ratio, and are generally easier to create, edit, and maintain.

Icons assigned to object types in the workbench will also determine the icon assignment in the Web UI.

For more information on assigning object type icons, refer to the Object Type Icons topic in the System Setup documentation.

For more information on how the updated icon set may impact your current object type icon assignments, refer to the 2023.3 (11.3) Upgrade Guide.

Updates to JavaScript, REST, and GraphQL APIs

The JavaScript API, the REST API, and the GraphQL API have been extended to improve functionality in existing methods. These improvements provide consistency among the APIs and help to support customers in automating testing efforts using the desired API.

JavaScript API

The JavaScript API has been improved with the following updates:

- In addition to the previous functionality of adding and removing attributes from attribute groups, now reference types and data container types can be identified, added, and removed from attribute groups via `getAttributeGroups()`, `addAttributeGroup()`, and `removeAttributeGroup()`.
- Previously, the inheritance of a value has been visible, and now, the name on an object can also be checked for inheritance via `isNameDimensionPointInherited()`.
- Previously, a product override could be created from a Business Rule, and now, a method to set the product to optionally override is available via `setOverriddenProduct()`.
- STEP can convert units on values, such as meters to centimeters, which is often needed when showing values to users. Now, the functions are publicly available via `convertValueToUnit()`.
- The ability to access information about which dimension point a translated value is set is now publicly available for values and LOV values via `getDimensionPoints()`.

Details on the JavaScript API functionality are included in the STEP API documentation (accessible at [\[system\]/sdk](#) or from the system Start Page) within the Extension API section from the Javadoc link.

REST API

The REST API has been improved with the following updates:

- Functionality already available for outbound and inbound integration endpoints is now available in REST API for gateway integration endpoints (GIEPs). Users can get a list of GIEP IDs, get the status of a GIEP by ID, and enable / disable a GIEP by ID.
- Now, the REST API can be used to approve deletions and purge assets, classifications, entities, and products that are in the recycle bin. For automated testing systems, temporary data (assets, classifications, entities, and products) is often created and should be cleaned up to avoid degraded system performance. For most other use cases, it is recommended to use a scheduled empty recycle bin instead.

Details on the REST API functionality are included in the STEP API documentation (accessible at [\[system\]/sdk](#) or from the system Start Page) using the link in the REST API section.

GraphQL API

The GraphQL API has been improved with the following updates:

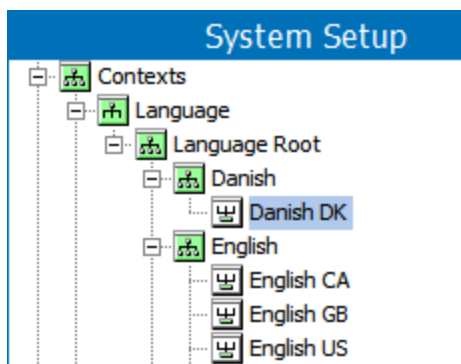
- When STEP IDs are not known by external systems, Keys can be implemented to uniquely identify objects through data known by external system. Keys can already be used through REST API, and are now also available in GraphQL API via the `keyID` parameter.

- Previously, the existing DateTimeValueConditionInput has only been available for use on attributes with the 'ISO Date and Time' validation base type. Now, attributes with the 'ISO Date' validation base type can also be used with the same existing operators (eq, lt, lteq, gteq, neq).
- Prior to this release, using 'search by list' required nesting OR statements, which is error prone and overly complex. Complex sets of OR statements are eliminated with the new list condition (using the ID, name, attribute, or defined key filter) and input is available for:
 - searchForAssets
 - searchForEntities
 - searchForProducts
 - searchForAttributes
 - searchForClassifications
- The sort order applied by users for object type (manual sorting) can be honored for product or classification children via the option `(sorting: {manualSort: true})` while setting the option to 'false' uses the default alphabetical sorting

Details on the GraphQL API functionality are included in the STEP API documentation (accessible at [system]/sdk or from the system Start Page) using the link in the GraphQL API section.

New object type and icon for contexts

Contexts on the System Setup tab now have a new object and icon. This allows contexts to be added to change packages and also gives a visual indication of the relationship between contexts and dimensions / dimension points, displaying the context in each relevant dimension hierarchy. The context editor continues to display as a table when selecting the top-level node and is used to create new contexts, edit selections for existing contexts, and delete contexts.



For more information, refer to the Contexts topic in the System Setup documentation.

Use of reflection in JavaScript business rules will be disabled

In JavaScript business rules, reflection has been used to access non-public methods in the API. Since reflection can be a security risk and can also potentially lead to performance issues and unexpected issues during upgrade, it will be disabled in a future release. With the current release, the new Configuration healthcheck 'Reflection usage in business rules' identifies business rules that use reflection and a warning with the text 'Attempted to call reflection API...' is written to the step.0.log. To prepare for restricted access of reflection usage, rewrite the reported business rules to use publicly available methods. If the needed functionality is not public, use the customer support portal to create an enhancement request to make the functionality public.

Name	Category	Issues	Severity	Status	Completed
Reflection usage in business rules	Configuration	4	High	Succeeded	13/07/2023, 00:10:13

For information on the healthcheck, refer to the Healthcheck Test Index topic in the Administration Portal documentation.

Improved performance and usability for delete operations

Stability and performance are improved for STEP's deletion operations to include initial deletion from the Tree, deletion approval, emptying the recycle bin, and force purging (which allows users to immediately force removal of data from the Recycle Bin). Usability is also enhanced by providing customers with more granular user feedback to better monitor system progress and improved error handling while deleting and purging. These improvements reduce the overall time required, for example, to iteratively load and then delete test data on a development or QA environment, and to remove unneeded data in a production environment.

Stibo Systems recommends using the new 'Data cleanup tools' Performance healthcheck to identify missing or poorly-configured scheduled purging processes. The healthcheck informs users:

- if scheduled Recycle Bin purging is not configured for all contexts. The system administrator can configure 'Schedule Empty Recycle Bin' for the Tree tab Recycle Bin to address this issue.
- if a scheduled 'Revision Management' event processor is not configured or is not enabled. Purging old revisions across workspaces improves performance.

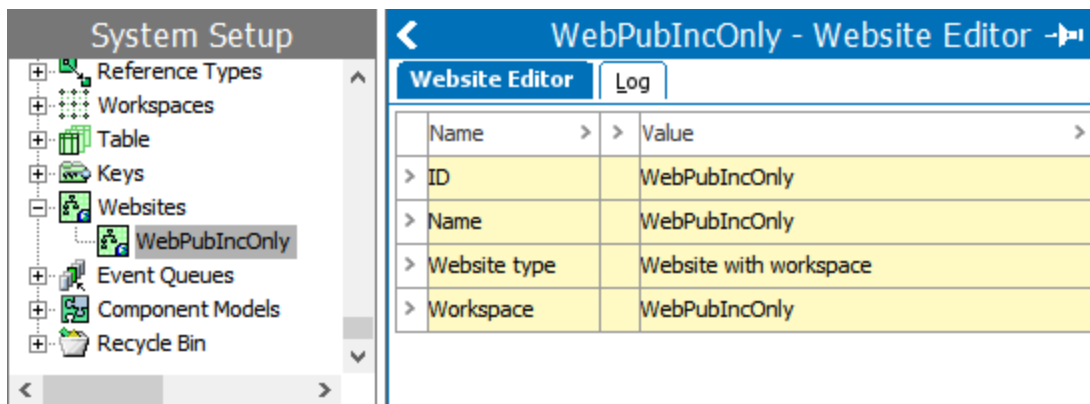
Name	Category	Issues	Severity	Status	Completed
Data cleanup tools	Performance	2	High	Succeeded	29/07/2023, 00:01:39

Although these improvements focused on Cassandra-based In-Memory systems, some of them benefit all system types.

For more information, refer to the Recycle Bin for the Tree Tab topic in the Getting Started documentation and the Healthcheck Test Index topic in the Administration Portal documentation.

Support removed for 'Website' legacy objects

In workbench, objects of the legacy object type 'Website' enabled customers to publish STEP data downstream, often to a website. The 'Website' object publication functionality was implemented using a workspace that holds data approved for publishing or tracking published data in files. **Support for 'Website' objects is discontinued with this release and customer action is required before upgrading to 2023.3 (11.3). Customers must manually delete 'Website' objects and any related workspaces for STEP to be able to start up after the upgrade.** STEP 2023.3 (11.3) cannot start if 'Website' objects exist.



The recommended functionality to publish data is outbound integration endpoints (OIEPs). For more information, refer to the Outbound Integration Endpoints topic in the Data Exchange documentation.

SSO login extended to Admin Portal

To provide a more consistent user experience for SSO users, now, user logging into on-premises hosted STEP systems using SAML can access the Admin Portal (STEP System Administration on the Start Page). Systems require a `sharedconfig.properties` entry to enable / disable the functionality.

STEP Authentication information is located in STEP API documentation accessible at `[system]/sdk` or from the system Start Page.

DaaS improvements

The following new capabilities extended the functionality for Stibo Systems' Data as a Service (DaaS):

- Derived events:** Publishing changes to an event queue now handles the generation of derived events more efficiently. The event queue subscription configuration now also includes new options to enable or disable the generation of derived events for child or parent objects or objects that are the source of incoming references. This improves performance and eliminates timeout issues, especially when the system has a large number of contexts.

- Dimension-Dependent LOVs: The @mapLinkedDimensionID directive is now valid under @mapListOfValuesObject, which, after republishing from STEP, allows access to the dimension dependencies on lists of value objects.

For more information, refer to the Publishing to Data as a Service topic in the Data as a Service documentation or the DaaS built-in User Guide.

Start page display based on user privileges for SaaS environments

Administrators can update the Start Page so that link categories and links are hidden if the user does not have the correct privileges assigned to them. This feature is only applicable for SaaS environments in which the user logs in with Keycloak. Below is the description of setup action privileges used against various link categories and links.

- Access Web UI - If the user does not have this setup action applied to their user group, then all Web UI links on the Start Page will be hidden from that user. If the user has access to this setup action for a particular setup group, they are allowed to log into the Web UIs within those groups only.
- Access Workbench - If the user does not have this setup action applied to their user group, then all workbench links on the Start Page will be hidden from the user.
- View SDK Documentation - If the user does not have this setup action applied to their user group, then the link to the STEP API Documentation in the 'Resources' section on the Start Page will be hidden from that user
- View Administration - If the user does not have this setup action applied to their user group, then they the links to the STEP Performance Analysis and STEP System Administration in the 'Resources' section on the Start Page will be hidden from the user.
- Update Web UI configuration - If the user does not have this setup action applied to their user group, then the Web UI Component Report link in the 'Resources' section on the Start Page will be hidden from the user.

The 'Resources' section will display for all users because the 'About STEP' and 'STEP Documentation' links are not controlled through user privileges.

For more information on Setup Actions, refer to the Setup Actions and Error Descriptions topic in the System Setup documentation.

List of Values updated change log

With this release, the List of Values (LOVs) log has been enhanced and now captures the details of values added, deleted, or updated. The log also shows the changes when any value is modified, added, or deleted for the dimension dependent LOVs. This update allows the administrator to track the changes for both dimension-dependent and non-dimension-dependent LOVs.

List of Values	References	Log	State Log	Tasks
Showing page 1 of 1				
2023-04-26 11:32:27 'STEPSYS': List of values modified : EN All USA : Modified value from 'null' to 'Japan'				
2023-04-26 11:32:28 'STEPSYS': List of values modified : EN All USA : Modified value from 'null' to 'UK'				
2023-04-26 11:32:28 'STEPSYS': List of values modified : EN All USA : Modified value from 'null' to 'USA'				
2023-04-26 11:32:28 'STEPSYS': List of values modified : EN All USA : Modified value from 'null' to 'Canada'				
2023-04-26 11:32:28 'STEPSYS': List of values modified : EN All USA : Modified value from 'null' to 'India'				
2023-04-26 11:39:26 'STEPSYS': List of values modified : EN All USA : Added value 'test'				
2023-04-26 11:39:26 'STEPSYS': List of values modified : EN All USA : Modified value from 'null' to 'This is a long value which consists of a very large number of characters, Just updating few more 12'				
2023-04-26 11:51:01 'STEPSYS': List of values modified : EN All USA : Modified value from 'test' to 'test1'				
2023-04-26 12:16:16 'STEPSYS': List of values modified : EN All USA : Added value 'testing'				
2023-04-26 12:32:59 'STEPSYS': List of values modified : EN All USA : Added value 'test2'				
2023-04-26 12:59:35 'STEPSYS': List of values modified : EN All USA : Added value 'dfd'				
2023-04-26 13:00:33 'STEPSYS': List of values modified : Context1 : Removed value 'test1'				
2023-04-26 13:00:36 'STEPSYS': List of values modified : Context1 : Removed value 'dfd'				
2023-04-26 13:00:51 'STEPSYS': List of values modified : Context1 : Removed value 'test2'				
2023-04-26 13:12:15 'STEPSYS': List of values modified : EN All USA : Added value 'test2'				
2023-04-26 13:17:03 'STEPSYS': List of values modified : Context1 : Removed value 'test2'				
2023-04-26 13:26:16 'STEPSYS': List of values modified : EN All USA : Added value 'test2'				
2023-04-26 13:27:26 'STEPSYS': List of values modified : Context1 : Removed value 'test2'				
2023-04-26 13:28:07 'STEPSYS': List of values modified : de-de : Modified value from 'null' to 'Japan'				
2023-04-26 13:28:08 'STEPSYS': List of values modified : de-de : Modified value from 'null' to 'USA'				
2023-04-26 13:28:09 'STEPSYS': List of values modified : de-de : Modified value from 'Australia' to 'UK'				
2023-04-26 13:28:11 'STEPSYS': List of values modified : de-de : Modified value from 'null' to 'Canada'				
2023-04-26 13:28:12 'STEPSYS': List of values modified : de-de : Modified value from 'null' to 'India'				
2023-04-26 13:28:34 'STEPSYS': List of values modified : de-de : Modified value from 'null' to 'This is a long value which consists of a very large number of characters, Just updating few more 12'				
2023-04-26 13:28:34 'STEPSYS': List of values modified : de-de : Added value 'test2'				

By default, the property ListOfValues.Log.IncludeValueInMessage is set to 'True' which allows the log to capture the details.

For more information on Lists of Values(LOVs), refer to the List of Values (LOVs) topic in the System Setup documentation.

Export and import of existing LOV values using Excel

Users can now export and import Lists of Values (LOVs) for existing LOVs via the Excel format. This update streamlines the exchange of LOV data between customers and their suppliers. A new plugin called 'Excel List of Values' is available in the 'Select Format' step of the Import and Export Manager. Successful exports output LOV data with the following column headers in an Excel file:

- <LOV ID>
- <LOV Name>
- <LOV Value ID>
- <LOV Value>

Additionally, successful imports of LOV data into existing LOVs via 'Excel List of Values' requires the file to have the same column headers in the same order. 'Excel List of Values' is auto selected for the 'Format' field in the 'Select Format' step of the Import Manager when importing a properly formatted Excel file.

The 'Excel List of Values' has a limit of 100 million characters for the <LOV Value> column.

For more information, refer to the Excel List of Values topic in the Data Exchange documentation.

Export 'Price Lists' and 'Attributes Inherited from Classification' using CSV or Excel

In the workbench, 'Price Lists (Commercial Data)' and 'Attributes Inherited from Classification' can now be exported using the CSV and Excel formats in outbound integration endpoints (OIEP) and in 'Export Manager.' This update simplifies the process of sending data to receivers that use industry standards such as ETIM or ECLASS.

For more information on Price Lists, refer to the eCatalogs topic in the eCatalogs documentation.

New 'Fraction (No Decimal)' attribute validation base type

A new attribute validation base type, 'Fraction (No Decimal),' which does not allow decimals, has been created. Only proper, improper, or mixed fractions are allowed for this new validation base type, and it works in both Web UI and Workbench.

For more information on Validation Base Type, refer to the Validation Base Type topic in the System Setup documentation.

Edit 'Started by' user field in scheduled processes

On the BG Processes tab in workbench, administrators can now edit the 'Started by' field for scheduled or queued processes found in the Scheduled Processes and Queued Processes folders. This enables customers to update users that no longer exist for existing scheduled processes instead of manually recreating them or deleting them. The administrator can edit the 'Started by' field when it has the privilege 'Manage Background Process Execution' added to the setup action. The below scheduled processes allow the administrator to edit the 'Started by' field, if they have the required privilege:

- Scheduled Data Translation
- Scheduled Data Export
- Scheduled Bulk Update
- Scheduled Category Profiling

For more information on Scheduled Processes, refer to the Scheduling a Data Export topic in the System Setup documentation.

Lionbridge APIv2 update

With 2023.3, the Lionbridge Connector will be upgraded to allow for integration to Lionbridge APIv2, the latest API provided by Lionbridge. The Lionbridge Connector has been certified by Lionbridge, meeting requirements from Lionbridge to ensure a stable and updated integration between STEP and Lionbridge. With the certification also comes an improved workflow and job status.

A new 'Quarantine' state for translation jobs sent through the Lionbridge V2 asynchronous translation component has been added. Now, when translation jobs are received from Lionbridge, they will remain in the 'Quarantine' state for 5 days before they are completed and archived.

This interim period gives customers time to review the job, contact Lionbridge if changes are needed, and approve it before it is archived. Previously, translation jobs received from Lionbridge V2 would be completed and archived immediately, requiring customers to open a new job if rework was required.

Execution reports have a specific ID that Lionbridge uses to assist with errors. Also, error messages from Lionbridge will be written in the execution report. For example, if a requested language is not supported, a message in the execution report will address the unsupported language. Users can then contact Lionbridge for more support.

There is also additional support for proxy servers.

The Translation Service Connector - Lionbridge commercial license is required to use this functionality.

For more information on this, refer to the Configuring an Asynchronous Translation Service topic in the Translations documentation.

Cloud-based Audit Message Framework delivery method available for SaaS

It is now possible to deliver audit messages from STEP to an Azure SQL cloud-based database, allowing SaaS customers to now use the Audit Message Framework (AMF). As with all AMF delivery methods, database messages can then be processed by a customer's business intelligence tools (Power BI, for example) to generate reports.

To use Audit Message Framework, the Analytics commercial license is required. Contact Stibo Systems to begin the process of enabling a license or licenses for your system.

The Azure SQL Database delivery method for AMF is configuration-driven, so those SaaS customers wanting to implement this solution should submit an issue within the customer support portal. SaaS Operations and Technical Services will reach out to get the specific information needed to complete the configuration.

For more information on the overall solution, refer to the Audit Message Framework section of the Analytics documentation.

New PDX Channels Context bind

A new PDX Channels Context bind allows STEP administrators to access PDX channel IDs of PDX channels selected by the user in Instrument, when configuring JavaScript-based business rules. This bind and two new PDX configuration properties (PDX.BusinessAction.AddChannels and PDX.BusinessAction.RemoveChannels) are part of the PDX channels solution in the Instrument UI as described in the Data Exchange Enhancements and Changes release note.

The Product Data Exchange Syndication commercial license must be enabled to use this functionality.

For more information about configuring the new bind, refer to the PDX Channels Context Bind topic in the Resource Materials online help documentation. For details about the PDX Channels setup in Instrument, refer to the Instrument Documentation that is included when Instrument is enabled on a system. It is located on the Start Page under Resources.

Web UI and Instrument Enhancements and Changes

Summary

The following enhancements and changes have been made to the Web User Interface:

- The **Web UI homepage** has been updated to reflect a more updated look and feel.
- Users can control available **Contexts and Workspaces** through the intersection of Global Representation Lists and workbench-specified GUI Settings.
- **Object type icons** have been updated for the STEP Workbench and Web UI.
- Many enhancements have been made within **Instrument UI**, currently being used by early adopters.

Details

Visual update to Web UI homepage

The Web UI homepage has been given a visual update to contemporize the interface. Continuing to align with the principles set forth in Google's material design, the primary aim of the changes has been to accentuate usability and seamless operation. To this end, the most noteworthy changes to the Web UI are:

- homepage widget corners are now rounded
- all pop-up and modal dialog corners are now rounded
- widget headers are now plain white
- subtle shading has been added to the homepage background

In addition, more directed improvements have been made to specific homepage widgets. For instance, styling changes have been made to the 'User Widget,' and table styling in the 'KPI Widget' has been updated.

For more information on the Web UI homepage and homepage widgets, refer to the Homepage Widgets topic in the Web User Interface documentation.

Displaying context and workspace per user in Web UI

In the Web UI, admin users can now control which workspaces and contexts are available for specific users and user groups. This is achieved through a combination of configuration settings applied on the Web UI's relevant Global Representation List components and workbench-specified GUI settings. These updates allow users with varying privilege levels the ability to view only those contexts and workspaces relevant to them even while working in the same Web UI. This gives Data Stewards more flexibility in how they configure access for their users, and provides a better user experience for users who view only what is pertinent to them.

Additionally, admin users can also determine whether users, based on their privilege level, will have access to the Workspace and Context settings found in the 'System Settings' options in the Web UI's Global Navigation Panel.

These restrictions will also be reflected in components throughout the Web UI where users have a context or workspace selection option, such as the Multi Context, Multi Language, and Multi Workspace Screens.

Previously, which workspaces and contexts were available for a user were restricted via the Global Representation List components, but this provided a global restriction only, meaning the access settings were applied to the Web UI, but made no distinction between users or user groups.

For more information on Contexts and Workspaces, refer to the Contexts and Workspaces topics in System Setup documentation.

Object type icons are updated for Web UI

An updated set of object type icons are now available with this release. In the STEP Workbench, admin users can select from a series of SVG icon images to assign to object types. The icons set there will also display in the Web UI. For more information on this change, refer to the 2023.3 (11.3) Upgrade Guide and the General Enhancements and Changes release notes.

Accelerator for Retail with Instrument enhancements

Customers utilizing the Instrument UI* will benefit from a number of enhancements, including:

- PDX channels (more details in the Data Exchange Enhancements and Changes release note)
- Smartsheet import and export
- Updated object type icons
- Compare tab updates
- Toolbar changes

Refer to the Instrument Documentation that is included when Instrument is enabled on a system. It is located on the Start Page under Resources.

*The Instrument UI is in ramp-up status. It will initially be enabled only for specific early-adopter deployments. To learn more about the ramp-up phase / status, refer to the License and Component Lifecycle in the System Update and Patch Notes section of online help.

Product MDM for Automotive 2023.3 (11.3) - 7.0.56 Release Notes

Release: September 2023



ANNOUNCEMENT

■ Fixed an issue with the AutoCare PIES Importer

Fixed an issue with the IIEP used by AutoCare PIES Importer, which was previously generating an error indicating that the intended entity already existed within the system. Previously, there was an issue with the IIEP used by the AutoCare PIES Importer. It would generate an error, indicating that the intended entity already existed within the system. As part of this fix, we have also updated the way AutoCare PIES imports are handled. Instead of directing them to a group node labeled 'SupplierGroup-[id]', they will now be routed to a group node bearing an ID derived from the supplier's name. However, in cases where the derived ID exceeds 40 characters, importer will automatically generate a numerical value based on the supplier's name to form the ID.

Hotfix recipe compatible with STEP 11.1 MP6 + Automotive-7.0.52: `to:hotfix/645/issue-645504-HOTFIX-6766.spr`.



PATCH RECIPE

The Automotive add-on can be installed with the following recipe:

`to:automotive/7.0/automotive-7.0.56.spr`

The above recipe is compatible with the following STEP 2023.3 (11.3) baseline recipe:

`to:step/platform/step-2023.3.spr`

Important: Once an Automotive add-on is installed to a base STEP system, the base system cannot be upgraded without upgrading the Automotive add-on at the same time. Additionally, when upgrading any base STEP system that has any Automotive add-on installed, both install recipes must be prepared at the same time.

For assistance in applying the patch to systems with extensions or additional add-on components, contact Stibo Systems Technical Services. For on-premise systems, instructions for installing components can be found in the SPOT Program topic in the System Administration Guide found in Downloadable Documentation. For SaaS systems, contact Stibo Systems Support.

Platform and Software Support Changes

This section lists current and future planned changes to platform and software support. The complete list of platform and software support is available in the 2023.3 (11.3) Platform and Software Support section of the System Update and Patch Notes documentation within online help.

The changes in platform and software support from version 11.2 to 2023.3 (11.3) are listed below. **Customer action may be required.**

Current Updates

Support for the items listed below has ended:

- Red Hat Enterprise Linux and Oracle Linux 7.9 are not supported for new customers. Existing customers, refer to the [Future Updates and End-of-Life Notifications](#) section below.

Future Updates and End-of-Life Notifications

The support for the items below will end with the next feature release 2023.4 or as indicated.

Server and client support

- Red Hat Enterprise Linux and Oracle Linux 7.9 will be supported for existing customers until officially desupported on June 30, 2024.
- macOS 11 (Big Sur) support ends with the 2023.4 release.

Updated: New on-premises deployment architecture

One of Stibo Systems' strategic focuses is on delivering a superior SaaS service, which leads to changes in our overall architecture to introduce more and more containerized microservices. These changes cannot be deployed on-premises or in a private cloud without changes to the deployment architecture. To allow on-premises customers to continue to upgrade STEP, **starting with the 2024.3 release in 2024** (not 2024.2 as previously reported), these customers need to change the way that Stibo Systems' software is deployed on-premises so it is aligned with how Stibo Systems' deploys in SaaS. Upgrades to 2024.3 and subsequent releases will require a new deployment architecture where the current application server architecture is replaced by a containerized architecture—just as in SaaS. This in turn requires extra hardware due to an overhead in running the SaaS architecture on-premises. Application operations like starting and stopping the application will be similar in complexity to today—but different.

The database deployment architecture will be exactly the same, so database administration along with backup / restore will remain the same. Any deployment of InDesign and Elasticsearch will also remain the same. Only the application server architecture is changed. On-premises and private cloud customers will receive more detailed documentation separately.

Baseline EOL

Support for these STEP versions ends as indicated below:

- Support for 10.1 ends on December 1, 2023.
- Support for 10.2 ends on May 1, 2024.
- Support for 2023.3 ends September 30, 2024.
- Support for 10.3 ends on November 1, 2024.

Customers should update as soon as possible to the latest release of Stibo Systems Enterprise Platform (STEP). Contact Stibo Systems if you have questions and/or to receive help and guidance on how to update to a supported release.

Software errors reported for the versions shown above may be rejected after the listed effective dates. Application support issues in progress for the releases being desupported will be closed on the desupport date. It is not possible to extend the support services for desupported versions.

Miscellaneous Bugfixes

A number of bugfixes have been applied as part of this release. Refer to the entire set of 2023.3 (11.3) release and maintenance patch notes prior to installing or upgrading.

■ Fix for problems with Translation Status search (on In-Memory systems)

Customers were reporting issues with the Translation Status search option, specifically the translation status for attributes and LOVs. The search returned wrong results and was broken. This has been fixed and backported to STEP-10.3 and 11.0.

■ Fix for ECLASS Advanced: Import encountered node data error after node children while using business rules

Fixed the ECLASS Advanced pre-processor to correctly create STEPXML files when a product contains child products and values. This will prevent the error in the importer which occurs when it tries to import the file using Inbound Integration Endpoint with processing business rules attached.

■ Fix for Elasticsearch error with STEP 11.2-MP1

Now, a removed property (Elasticsearch.FeatureToggle.SupplierPrivileges) will not be mentioned in the warning message about a missing supplier setup for Elasticsearch. There is also a hotfix available for this solution that is applicable to saas-11.2 and elasticsearch-integration-7.0.29.

■ Fix for / change to Dun & Bradstreet process

Introduced a possibility to disable deletion of unused DnB candidates to avoid optimistic locking during the simultaneous DnB event processors execution. Contact Stibo Systems Support to enable this functionality.

■ Fix for data errors occurring during SaaS migration

Customers should note that when using the Cassandra database, do not delete the latest transition log entry for a given workflow and node, even if it is older than the configured retention time.

■ Fix for HAProxy not starting

The user was no longer present on the system. Now, the primary group of a user that started the loadbalancer frontend will be used instead of the hardcoded user group when creating the stats socket in HAProxy.

■ Fix for when asynchronous translation to Lionbridge is not working after upgrading to 11.2-MP2

Added proxy support to the tus client. There is also a hotfix available for this solution that is applicable to lionbridge-7.0.20 and saas-11.2.

■ **Fix for PDX: attribute type is not setting as composite for the newly published reference attribute**

When products are sent from STEP to PDX, composite attributes for asset references were not sent to PDX if the asset reference was dimension dependent. The references did not have a value in the default context defined in the configuration of the Outbound Integration Endpoint delivery, and the reference had a value in one of the other contexts exported by the Outbound Integration Endpoint. This has been fixed.

■ **ISSUE-506586 - Fix for STEP InDesign plugin - after Database Update applied paragraph style is not correct**

Fixed a problem with the InDesign client plugin. Previously, after a Database Update was applied, the paragraph style was lost when using a STEPCOND tag.

■ **ISSUE-568480 - Fix for export current view not exporting 'Title Header' when using a custom label**

Now, it is possible to export a title header from the Web UI Node List via the 'Export Current View' toolbar action if the header has a customized label.

■ **ISSUE-580302 - Fix for Delete Reference showing in Web UI for References Properties**

Fixed a problem occurring when Delete Reference action was available for a user without the privilege to delete the reference on a Web UI Node Editor's References component.

■ **ISSUE-614734 - Fix for an error that occurred during updates to overridden products**

When assigning an overridden product to a product override, STEP would reuse that relation if applicable. However, if the past overridden-product relation has been approved and then deleted, STEP would try to reuse the wrong past relation, which prevented assigning the overridden product, and gave an internal error 'Cannot subtract: Main.' This has now been fixed so that reuse is not implemented in cases where the relation cannot easily be found.

■ **ISSUE-615780 - Fix for when upgrade (11.0-MP4) makes the system behave incorrectly for special character combinations**

Introduced a possibility to disable tag escaping in Attribute Validated Parameters for Run Business Action dialog. To use this possibility, contact Stibo Systems Support. There is also a hotfix available for this solution that is applicable to saas-11.0 and 11.2, step-11.0-mp4 / mp5, and step-11.2-mp1 / mp2.

■ **ISSUE-619495 - Fix for a matching algorithm not creating a confirmed non-duplicate reference after a clerical reject of products**

Changes made for 11.0 and potential duplicate relation include: removed confirmed non-duplicates of a workflow compatible node before processing by task updaters; and remove duplicates with existing potential duplicate relation to avoid creating a PDR task without duplicates. There is also a hotfix available for this solution that is applicable to saas-11.0 and step-11.0-mp4 / mp5.

■ **ISSUE-623750 - Fix for issues deleting old Primary Product Hierarchy (PPH) objects**

Introduced a possibility to skip counting the children when purging the node from recycle bin in workbench. To toggle this property, contact Stibo Systems Support. There is also a hotfix available for this solution that is applicable to saas-11.2 and step-11.2-mp1 / mp2.

■ **ISSUE-624180 - Fix for when logs are full with SecurityFilter Token expired warnings**

Changed a log level from 'WARNING' to 'FINE' for 'Token not present / expired' messages for an invalidated workbench session being open in application server logs.

■ **ISSUE-626274 - Fix for when the proof view action is not working**

Modified the code to send a dummy request between client and server to keep the connection alive while InDesign Render is producing the proof or PDF. Also, added a timeout property set to 15 minutes. If no result is delivered in that time period, the requests are stopped. There is also a hotfix available for this solution that is applicable to saas-10.3, as well as step-10.3-mp4 and 10.3-mp5.

■ **ISSUE-626629 - Fix for exception handling not executing correctly for an 11.1 system upgrade**

When GraphicsMagick failed to parse an image, it would throw a runtime exception that could not be caught in a business rule. The system will now throw an ImageParserException that can be caught.

■ **ISSUE-628610 - Fix for special tags in the UI not showing as expected**

Now, the tags formatting will be correctly displayed for the Web UI Node Editor Attribute Value component configured to display an LOV attribute with a checkbox or radio button override control type. There is a hotfix available for this solution that is applicable to step-10.3-mp4 / mp5 and saas-10.3.

■ **ISSUE-628801 - Fix for when multi-context exports multiple values for a reference**

STEP exporter improvement for non-stepXML formats: inherited depth, context, and qualifiers are considered on reference while applying mapping rules. There is also a hotfix available for this solution that is applicable to saas-11.1 as well as step-11.1-mp3, step-11.1-mp4, step-11.1-mp5, and step-11.1-mp6.

■ **ISSUE-630488 - Fix for when PIM is not able to save a new LOV value in an attribute**

Fixed a problem when LOV values with lesser than / greater than tags were not displayed correctly on the Web UI Node Editor in an attribute value / value group component with the dropdown option. There is also a hotfix available for this solution that is applicable to saas-11.1 and step-11.1-mp4 through mp6.

■ **ISSUE-632876 - Fix for when a user can not change an object type of an asset in STEP quality and production system**

There was an issue where the user could not change an object type of an asset in a customer's STEP quality and production system. This has been fixed, and deletion of a staging workspace is allowed.

■ **ISSUE-633081 - Fix for missing thumbnails for proprietary assets and style guides**

Now, the default thumbnail icons will be shown again under the thumbnail header for products / classifications / entities on the Web UI Node List.

■ **ISSUE-634073 - Fix for opening an attribute in the workbench leading to a stack trace**

Attributes there were migrated to STEP 11.2 from an older STEP release could not be opened in the workbench if they had a language + country dimension. This has now been fixed.

■ **ISSUE-635410 - Fix for NullPointerException when importing STEPXML with MergedGoldenRecordComponent**

Fixed a bug that prevented the null pointer from getting component model elements. There is also a hotfix available for this solution that is applicable to saas-11.2 and step-11.2-mp1. The fix was also included in step-11.2-mp2.

■ **ISSUE-636470 - Fix for when the submit button is greyed out after unchecking 'Lazy' functionality on the 'Main Information' tab**

Fixed a problem when a mandatory value group component hidden under the 'Grouping Option' component caused the buttons of the Web UI Node Editor screen to be grayed out if it did not have a mandatory value populated.

■ **ISSUE-637723 - Fix for delete references tags not being exported by database exporter**

The DeleteClassificationCrossReference tag will now be added in the exported STEPXML when using the database exporter.

■ **ISSUE-637785 - Fix for when external users are not able to reset their password**

Fixed a problem with the concurrent generation of JWT signing key on a clustered setup. There is also a hotfix available for this solution that is applicable to saas-11.1 / 11.2, step-11.1-mp1 through mp6, step-11.2, and step-11.2-mp1 / mp2.

■ **ISSUE-638892 - Fix for severe data error after database refresh**

Attributes there were migrated to STEP 11.2 from an older STEP release could not be opened in the workbench if they had a language + country dimension. This has now been fixed.

■ **ISSUE-640822 - Fix for a PMDM upgrade paste issue in workbench**

The copy paste functionality for multiple values was not working. This has been fixed. There is also a hotfix available for this solution that is applicable to saas-11.1 and step-11.1-mp3 through mp6.

■ **ISSUE-640983 - Fix for all environments (V11) - issues with creating a specific product**

Fixed the issue which caused the whole import to fail when the triggered business rule ran the next workflow step, which ran another business rule, that failed and threw an exception.

■ **ISSUE-641017 - Fix for when the STEPXML LOV import skips 'replace' when XML contains an empty value**

You can now import LOV values that are empty for LOVs with value IDs. If the value is the only one across all contexts, the LOV value will be fully deleted. If it has a value in other contexts, it will inherit it from those or just not have a value. Or, if you import a LOV value that is empty and it does not already exist, nothing will happen.

■ **ISSUE-641160 - Fix for local directory enumeration test findings**

Fixed directory traversal vulnerability in Logo Widget component request to server, which was allowed to traverse from the custom theme folder on a server.

■ **ISSUE-641363 - Fix for outbound integration endpoints post-processor issue**

Fixed a problem when OIEP post-processors were not invoked when processing a split event batch after receiving a delivery exception. There is also a hotfix available for this solution that is applicable to saas-11.1 and step-11.1-mp4 through mp6.

■ **ISSUE-641616 - Fix for products added under classification not showing up sometimes**

Fixed problem occurring when a selected item on a Tree Navigator on a Global Navigation Panel in Web UI did not have an expand indicator even though it does have the children underneath, after performing a search on a Global Navigation Panel. There is also a hotfix available for this solution that is applicable to saas-11.1, step-11.2-mp4 through mp6, and step-11.2-mp2.

■ **ISSUE-641906 - Fix for improved healthcheck safety**

A stability fix was made for these two healthchecks: 'Duplicated History Entries' and 'Value missing content.' There is also a hotfix available for this solution that is applicable to step-11.2-mp2.

■ **ISSUE-642268 - Fix for when image previews were not working after an upgrade to 11.2**

Fixed a problem when assets with conversion info set as image conversion configuration were not displayed on the Web UI Node Editor's referenced asset representation component. There is also a hotfix available for this solution that is applicable to step-11.2-mp2.

■ **ISSUE-642721 - Fix for Classification Product Links showing column name when blank**

Fixed a problem occurring when the Classification Product Links component on a Web UI Node Editor screen was showing the configured table headers, when it was set up as a ReadOnly and the selected item did not have any Classification Product Links to be shown. Now it will show None, just like a References Component with the same setup.

■ **ISSUE-642892 - Fix for exception when loading bulk update configuration**

Fixed problem occurring when a saved Bulk Update Set Single Value configuration could not be reused if it was targeting the node with the empty multi-value LOV with ID attribute, which has to be updated in this configuration. There is also a hotfix available for this solution that is applicable to saas-11.1 and step-11.1-mp3 through mp6.

■ **ISSUE-643069 - Fix for an unhandled exception when accessing completeness score with max value**

Fixed a problem when the completeness score component with a max score for subscores was not loading on the Web UI Node Editor in a non-English locale, causing an unexpected exception to appear. There is also a hotfix available for this solution that is applicable to saas-11.2, step-11.2, and step-11.2-mp1 / mp2.

■ **ISSUE-643098 - Fix for when an export product in the Web UI is not working if the data container is included in export configuration**

When an export configuration contains mapping for nested objects, sorting rows will be skipped in the XLS output. This will be consistent with export behavior when triggered from the workbench.

■ **ISSUE-643708 - Fix for when attribute is set mandatory with business condition, business actions are disabled**

Changed errors to warnings for missing mandatory attributes. Warnings work with enforce validity for: Node Selector, Value Component, Globally Configured References, and Rich Text. Source of the missing mandatory is irrelevant.

■ **ISSUE-645657 - Fix for SaaS Migration Hypercare: exported metadata are not in order**

When exporting products with multiple product to classification links with metadata, the order of the links and metadata was not consistent. This has been fixed.

■ **ISSUE-646214 - Fix for when no unique key is visible in the dropdown of the Advanced Search option: 'Search from list'**

A problem with the select type ID options dropdown coming up empty in Search From List in the Web UI Advanced Search has been fixed. There is also a hotfix available for this solution that is applicable to saas-11.1 and step-11.1-mp2 through mp6.

■ **ISSUE-646553 - Fix for a revision error**

Fixed a problem when performing a 'Purge Action' in the workbench on a list of IDs with selected Setup Configuration node type that caused an unexpected exception to appear in the corresponding BGP. There is also a hotfix available for this solution that is applicable to saas-11.1 and saas-2023.3, as well as step-11.1-mp4-6, and step-2023.3.

■ **ISSUE-646872 - Fix for SaaS - 'Swap User' not working work on IIEP**

Fixed a problem where the Swap User functionality from the File Loading Widget in Web UI did not work for business rules called during the IIEP execution, which were retrieving the current user from manager bind.

■ **ISSUE-648396 - Fix for Mapping config causes stacktrace**

Fixed unexpected exception on the Mapping step in workbench Import Manager when trying to map a column to the attribute with default unit.

■ **ISSUE-648500 - Fix for SaaS migration issue: business rule getting null pointer exception**

Fixed a problem when LFSC 0bits.legacy shadow copies could have been retrieved by attributeGroup.getAttributes() invocation via a business rule with 'Run Privileged' checkbox enabled.

■ **ISSUE-649425 - Fix for when 'Hide Equal' was not working correctly on the Revision screen of the Web UI**

Fixed a problem when 'Hide Equal' action did not work on the Web UI Multi Revision screen. There is also a hotfix available for this solution that is applicable to saas-11.1 and saas-2023.3, as well as step-11.1-mp4-6, step-11.2, and step-2023.3.

■ **ISSUE-649432 - Fix for parent reference being deleted when deleting inherited asset reference from Multi Context Editor screen**

Now, when deleting the inherited reference / classification to product link on a Web UI Node List's Reference Table Header, an error message will be shown: 'The link/cross reference is inherited and thus cannot be deleted.'

■ **ISSUE-650606 - Fix for when an inconsistent scroll bar appears inside a table**

Fixed a problem when an unnecessary scrollbar was showing for long cell values on the Web UI Node List Table Display mode cells.

■ **Bugfixes and enhancements in the BMEcat solution**

These enhancements were made as solutions to customer and internal bugfix tickets:

- Running the BMEcat Model easy setup action now creates description attribute ISO-639-2 (ID = stibo_ISO-639-2), which is valid for both Entity type and Entity Reference type. This attribute stores the Language ISO Code for Language Dimension Points. If this attribute already exists in the system, then running the setup action adds it to the BMEcat Attributes group, making it visible in the Language Dimension Point.
- The exported file now includes <LANGUAGE> tags generated based on the value populated in the ISO-639-2 attribute for each exported context's selected language. If no value is present in this attribute for any exported context, the <LANGUAGE> tag is generated based on the selected Locale (if available). In the BGP logs for each exported context, a message indicates the source of the <LANGUAGE> tag value, whether it originates from the ISO-639-2 attribute or the locale.
- The OIEP allows saving the BMEcat export Output Template without having to select any language (which is not allowed in standard BMEcat export). However, upon invoking such OIEPs, the BGP terminates with an error indicating that mandatory contexts and the default context have not been selected, thus halting the export process.
- Language field generated based on Sample field is no longer taken into account in <LANGUAGE> tags in the output file if there is any context specified. However, if a Language parameter exists and has a value in it, then the BGP warns the user that this value will be overwritten by contexts selected in 'Export Context for selected contexts' field. The error message states: 'Found a <LANGUAGE> tag specified in the sample. It will be overwritten by language dimensions selected in Cross Context Chooser field.'
- BMEcat exporter is updated to correctly export all the block and attribute names based on the default context selected in the 'Select default context' field. Previously, some block and attribute names were exported based on the context selected in the workbench.

Following are the hotfixes available for the above mentioned issues:

Hotfix recipes compatible with STEP 2023.3 (11.3) + eclass-advanced-7.0.11:

- `to:hotfix/676/issue-676453-HOTFIX-7036.spr`
- `to:hotfix/677/issue-677280-HOTFIX-7046.spr`
- `to:hotfix/684/issue-684862-HOTFIX-7137.spr`
- `to:hotfix/684/issue-684950-HOTFIX-7142.spr`

Hotfix recipes compatible with STEP 2023.3 (11.3) + bmecat-7.0.53:

- `to:hotfix/676/issue-676453-HOTFIX-7036.spr`
- `to:hotfix/677/issue-677270-HOTFIX-7045.spr`
- `to:hotfix/684/issue-684862-HOTFIX-7137.spr`

Hotfix recipes compatible with STEP 2023.4 + eclass-advanced-7.0.12:

- `to:hotfix/677/issue-677297-HOTFIX-7047.spr`
- `to:hotfix/678/issue-678136-HOTFIX-7060.spr`
- `to:hotfix/684/issue-684862-HOTFIX-7137.spr`
- `to:hotfix/684/issue-684950-HOTFIX-7142.spr`

Hotfix recipes compatible with STEP 2023.4 + bmeocat-7.0.54:

- `to:hotfix/677/issue-677297-HOTFIX-7047.spr`
- `to:hotfix/677/issue-677502-HOTFIX-7050.spr`
- `to:hotfix/684/issue-684862-HOTFIX-7137.spr`

- Addressed an issue where exporting large BMEcat files encountered errors. Current implementation uses streams ensuring smooth export operations regardless of file size. Users can now export large BMEcat files without encountering performance issues or errors.

For the BMEcat 2005 version, **Hotfix recipes compatible with STEP 2023.3 (11.3) + bmeocat-7.0.53 and STEP 2023.4 + bmeocat-7.0.54:**

- `to:hotfix/693/issue-693598-HOTFIX-7241.spr`

For the BMEcat 2005.1 version, **Hotfix recipes compatible with STEP 2023.3 (11.3) + eclass-advanced-7.0.11 and STEP 2023.4 + eclass-advanced-7.0.12:**

- `to:hotfix/693/issue-693731-HOTFIX-7242.spr`

For general information regarding BMEcat export and configuration, refer to the Exporting in BMEcat 2005.1 Format and BMEcat 2005 Format topics of the Data Exchange documentation.

Note: Customers may want to search the Support Portal for their Issue Numbers (if shown). To do so, while in the Support Portal, navigate to Issues (in the header bar) and then select 'Search for Issues.' Click on the 'Advanced' option on the filtering bar, and then type in 'issue=' and the issue number. Press Enter or click the magnifying glass icon to run the query. **Users can only view Support Portal issues for issue numbers that they have privileges to access. If the issue is not applicable to the user searching, then a 'No issues were found to match your search' message displays.**

2023.3 (11.3)-MP1 Maintenance Patch Notes

February 2024

Note: There are no regularly scheduled maintenance patches. However, there are times an ad-hoc maintenance patch must be made available to allow for system hotfixing. It is important that users read the documentation below. Action may be needed by on-premises customers to install this maintenance patch so that they can apply hotfixes, if / when applicable.



BUGFIXES

■ ISSUE-572265 - Fix for a Web UI error message telling users to check the server log

Added localizable 'Item cannot be deleted due to {number} reasons. Check the server log for more details.' message to Web UI, when an item cannot be deleted after clicking on Delete Action button. This message will be shown in locales other than the default English locale, where the non-localizable reasons will be shown as it was before. There is also a hotfix available for this solution that is applicable to step-11.0-mp4 and 11.0-mp5.

■ ISSUE-586557 - Fix for Referenced Asset Representation Web UI component display assets error

Fixed problem: uploading multiple assets via the Referenced Asset Representation with Asset Import Configuration caused only the last uploaded asset thumbnail to be shown on a Web UI Node Editor before the user saved the result.

■ ISSUE-603849 - Fix for displaying thousands separators in attribute values on the Web UI

Introduced a possibility to show the thousands separators on the Web UI Node Editor and Web UI Node List when displaying the Attribute Value components of numeric-based validation base types. To toggle this possibility, contact Stibo Systems Support. There is also a hotfix available for this solution that is applicable to saas-11.1, saas-11.2, as well as step-11.1-mp4, step-11.1-mp5, step-11.1-mp6, and step-11.2-mp1.

■ ISSUE-619495 - Fix for a matching algorithm not creating a confirmed non-duplicate reference after a clerical reject of products

Changes made for 11.0 and potential duplicate relation include: removed confirmed non-duplicates of a workflow compatible node before processing by task updaters; and remove duplicates with existing potential duplicate relation to avoid creating a PDR task without duplicates. There is also a hotfix available for this solution that is applicable to saas-11.0 and step-11.0-mp4 / mp5.

■ **ISSUE-625810 - Fix for a healthcheck still running after 4 days**

Implemented a fix to make the admin portal refresh less aggressively when healthchecks are running. There is also a hotfix available for this solution that is applicable to step-11.1, step-11.1-mp1, 11.1-mp2, 11.1-mp3, 11.1-mp4, and 11.1-mp5.

■ **ISSUE-630531 - Fix for an error configuring standard functionality in a workflow**

Fixed NullPointerException that occurred in workbench when accessing a Bulk Update Trigger Workflow Event business rule. There is also a hotfix applicable to saas-11.1, saas-2023.3, step-11.1-mp3 to mp6, step-11.2-mp2, and step-2023.3.

■ **ISSUE-633784 - Fix for TecDoc Reference data import - Fatal error - Can't enter single mode update**

Improved NsmStateReport to contain the information about RWLocks.

■ **ISSUE-640304 - Fix for inability to add a new line to a data container when attribute value contains greater than or less than characters**

Fixed problem occurring when it was not possible to save an LOV value with less than / greater than characters in the Add Data Container dialog, invoked from Multi Edit Data Container of Globally Configured Data Container component in Web UI.

■ **ISSUE-641564 - Fix for ORA-02291: integrity constraint (STEPSYS.NODESTATE_PREVIOUS_TRAN_FK) violated - parent key not found**

Trying to move an object through a workflow could cause the error: ORA-02291: integrity constraint (STEPSYS.NODESTATE_PREVIOUS_TRAN_FK) violated - parent key not found. This has been fixed.

■ **ISSUE-643697 - Fix for bind error**

Fixed possible ClassCastException when opening a Packaging screen in Design Mode in Web UI.

■ **ISSUE-643708 - Fix for when attribute is set mandatory with business condition, business actions are disabled**

Changed errors to warnings for missing mandatory attributes. Warnings work with enforce validity for: Node Selector, Value Component, Globally Configured References, and Rich Text. Source of the missing mandatory is irrelevant.

■ **ISSUE-648396 - Fix for Mapping config causes stacktrace**

Fixed unexpected exception on the Mapping step in workbench Import Manager when trying to map a column to the attribute with default unit.

■ **ISSUE-648500 - Fix for SaaS migration issue: business rule getting null pointer exception**

Fixed a problem when LFSC 0bits.legacy shadow copies could have been retrieved by attributeGroup.getAttributes() invocation via a business rule with 'Run Privileged' checkbox enabled.

■ **ISSUE-649425 - Fix for when 'Hide Equal' was not working correctly on the Revision screen of the Web UI**

Fixed a problem when 'Hide Equal' action did not work on the Web UI Multi Revision screen. There is also a hotfix available for this solution that is applicable to saas-11.1 and saas-2023.3, as well as step-11.1-mp4-6, step-11.2, and step-2023.3.

■ **ISSUE-649432 - Fix for parent reference being deleted when deleting inherited asset reference from Multi Context Editor screen**

Now, when deleting the inherited reference / classification to product link on a Web UI Node List's Reference Table Header, an error message will be shown: 'The link/cross reference is inherited and thus cannot be deleted.'

■ **ISSUE-649501 - Fix for when collection refresh is not working for OIEP**

Fixed the refresh of collections when running a business rules based outbound processing engine.

■ **ISSUE-649514 - Fix for BMEcat export: Referenced objects are added**

Fixed the issue with too big STEPXML files being generated when creating BMECat exports with the product reference type mapping. There is a hotfix available for this solution that is applicable to saas-11.1, saas-2023.3, step-11.1-MP3 through MP6, step-11.2-mp2, and step-2023.3.

■ **ISSUE-650606 - Fix for when an inconsistent scroll bar appears inside a table**

Fixed a problem when an unnecessary scrollbar was showing for long cell values on the Web UI Node List Table Display mode cells.

■ **ISSUE-651166 - Fix for issue with LOV display on Web UI**

Fixed a problem occurring when selecting a read-only value on a Web UI LOV Management Screen Values tab caused it to disappear.

■ **ISSUE-655336 - Fix for LOV Cross Validation not working in Web UI after 11.1 Upgrade**

Fixed a problem occurring when LOV cross validation stopped working on the Web UI Multi-Reference screen.

■ **ISSUE-656469 - Fix for Download XLS not working**

Fixed a problem with downloading an Excel Workbook asset from the Web UI. A ZIP file was downloaded by mistake. A hotfix applicable to saas-2023.3 and step-2023.3 is also available for this solution.

■ **ISSUE-656770 - Fix for bug in Grouping component**

The problem seen was that the fields for the Attribute Value Group component are not visible to the user when it is used within the Grouping component in Web UI. A fix has been implemented to make those fields visible to the user in order to manage the content for each attribute. A hotfix applicable to step-2023.3 and saas-2023.3 is also available for this solution.

■ **ISSUE-657079 - Fix for error when adding new record with multiple values in a data container**

Fixed a problem occurring when multi values, chosen on the Add Data Container popup for Globally Configured Multi Data Container, caused an uncaught exception to be thrown. A hotfix for this solution is available and applicable to saas-2023.3, step-11.2-mp2, and step-2023.3.

■ **ISSUE-657277 - Fix for Migration - Web UI - Golden Record Clerical review task list error**

Fixed a bug appearing when having a database migrated from Oracle into Cassandra with transition log rows. A bug resulted in errors when trying to inspect historic workflow transitions on certain objects. The bug was introduced with 2023.3 release. A hotfix applicable to saas-2023.3 and step-2023.3 is also available for this solution.

■ **ISSUE-657499 - Fix for Multi Reference not working in split panel**

Fixed a problem when the Multi Reference component, configured as a right component of a Split Panel, was not being shown in Web UI.

■ **ISSUE-657805 - Fix for account REST Reciever not processing files**

Fixed a problem with hotfolder implementations causing a five-second delay between processing each file (backported to 10.2). Also, fixed a problem occurring when the Purge revisions process threw an exception when purging entities from a list with the IDs.

■ **ISSUE-658057 - Fix for an outbound export issue: Workflow does not export local business rules**

Fixed a problem when local business rules were not exported during the workflows export via Outbound Integration Endpoint.

■ **ISSUE-658255 - Fix for when editing an LOV value in the Web UI destroyed inline formats**

Introduced a possibility to disable the less than / greater than tags escape when saving the changed LOV values on LOV Management Values screen in order to prevent removing the STEP style tags from the values. The screen does not support displaying and adding the tags, but a solution was created so that the tag formatting will be preserved, if needed. To implement this solution, contact Stibo Systems Support.

■ **ISSUE-658939 - Fix for International Bank Account Numbers (IBAN) having the wrong date after a system upgrade to 11.1mp5**

When editing dates in data containers in the Web UI, the date would be stored wrong. This has been fixed.

■ **ISSUE-658956 - Fix for upgrade to 11.1-mp6 not preserving transparency in transformed assets**

Previously, a transparent background was replaced by white color. Now, converted images are keeping their transparency for png files.

■ **ISSUE-659034 - Fix for inability to view thumbnails in SaaSv2**

Added support for importing TIFF assets of photometric type 3, indexed color.

■ **ISSUE-659424 - Fix for post-hotfix issue with choosing a checkbox**

Fixed a problem where it was not possible to change and save a multi-value LOV, represented by checkboxes, on a Web UI Node Editor, if LOV values contained formatting tags. There is a hotfix for this solution that is applicable to the following baselines: saas-10.3, saas-11.0, saas-11.1, saas-2023.3, step-10.3-mp4 / mp5, step-11.0-mp4 / mp5, step-11.1-mp4 through mp6, step-11.2-mp2, and step-2023.3.

■ **ISSUE-659574 - Fixed NullPointerException for Simple Import**

Fixed an issue with temporary collections and the export functionality in Web UI.

■ **ISSUE-659812 - Fix for copy from Excel Sheet into STEP not working anymore**

Flipping of table, while copying data from Excel, was removed. It allowed for the proper copying data from clipboard to Workbench. This is now fixed.

■ **ISSUE-659881 - Fix for State Log tab error**

Fixed a bug appearing when having a database migrated from Oracle into Cassandra with transitionlog rows. A bug resulted in errors when trying to inspect historic workflow transitions on certain objects. The bug was introduced with 2023.3 release.

■ **ISSUE-660238 - Fix for collection name being messed up from the Collection Content Screen in upgraded Production system**

Fixed a problem occurring when collection names were updated to BGP_tmp_input when starting a bulk update of a collection content in Web UI. Instead, only the temporary collection should be renamed this way.

■ **ISSUE-660269 - Logging added to identify reason for inability to create temp file**

Added more logging to IO exception that occurred when creating a temp file when uploading an asset.

■ **ISSUE-660639 - Fix for error on the Log tab for Entity objects in 2023.3**

Fixed IllegalArgumentException when accessing the Log tab in the workbench for the selected Entity.

■ **ISSUE-661188 - Fix for the Remove Attribute Link button not working after certain operations in the Attribute Link Editor screen of the Web UI**

Remove Attribute Links toolbar action did not work when selecting more than 50 items with the 'Select All' action. This is now fixed.

■ **ISSUE-661263 - Fix for inability to import translation STEPXML**

Fixed a problem occurring when an attribute, present in the translation import XML, but missing on a system where the translation import was initiated, was causing the exception during translation import when attempted to be created. In such cases, missing attributes should be skipped instead of being created.

■ **ISSUE-661733 - Fix for a context issue on the Web UI version 2023.3**

Fixed a problem when contexts with special characters in IDs (for example, braces) were not correctly filtered out from Global Navigation Panel in the Web UI if they were unchecked in GUI setup for a current user in workbench. There is also a hotfix available for this solution that is applicable to saas-2023.3, step-2023.3, and step-2023.4.

■ **ISSUE-661970 - Fix for OIEP disabled using REST API V2 cannot be enabled (by REST API) or resumed (in STEP Workbench)**

The following problems were fixed:

- Fixed a setback when a failed endpoint could not be resumed.
- Fixed an issue when stopping an endpoint via REST API caused a multiple pollers problem to appear, when the endpoint was rescheduling at the same time when it was about to stop.

■ **ISSUE-663029 - Fix for unresponsive Asset Push sidecar**

Stibo Systems implemented some code changes that will keep the connection between asset push and the STEP server alive while the assets are handled by the STEP server. Furthermore, additional logging has been added.

■ **ISSUE-663682 - Fix for translation status of attributes**

Solved a problem when the translation status always appeared as 're-translation needed.' This bug was introduced by HOTFIX-6824.

■ **ISSUE-665268 - Fix for monitors showing 'Unknown' and 'Critical' for services which are up and running before a STEP upgrade**

Fixed a problem occurring when sidecar monitoring was reporting the wrong Java version even though Java 11 was installed. A hotfix is available for this solution and is applicable to saas-2023, step-11.2-mp2, and step-2023.3.

■ **ISSUE-665700 - Fix for unable to download CSV**

Fixed NullPointerException and IndexOutOfBoundsException exceptions occurring when downloading text (.txt) extension files, with the txt mime type but .csv extension in the file name, from the Web UI.

■ **ISSUE-667910 - Fix for the performance analysis events tab**

Fixed a problem when triggering an event did not log this action into the activity scope, which later can be used by Performance Reports in Events on STEP with Cassandra.

■ **ISSUE-668215 - Fix for system crash when clicking on item list**

Fixed a problem occurring when the Assignment Time and Time in State column values for the Workflow profile screen were calculating even if these columns were not configured in the corresponding WF Profile. This was causing performance problems.

■ **ISSUE-668478 - Fix for STEP allowing entities to be imported with duplicate unique key values**

This is a fix to allow LOV attribute values using IDs to be imported using just the LOV value ID, while also using the attribute as part of a unique key. There is also a hotfix available for this solution that is applicable to saas-2023.3 and step-2023.3.

■ **ISSUE-668523 - Fix for the PCM Deadline Processor running slow after STEP upgrade**

This is a performance fix for Oracle systems related to pruning old entries in the transition log.

■ **ISSUE-669933 - Fix for error when trying to update an attribute value in the workflow**

Fixed a problem when it was not possible to save the Attribute Value on the Web UI Node Editor, if it contained bullet point list with the spaces between a bullet point and a text.

■ **ISSUE-669976 - Fix for Supplier Portal user risk issue**

Introduced a possibility to disable the typeahead suggestions of user groups outside the current user's supplier hierarchy in Web UI. To enable this possibility, contact Stibo Systems Support.

■ **ISSUE-670119 - Fix for Multi Edit table view data container not forcing privileges**

Fixed a problem when attribute value table headers were shown under the Web UI Multi Edit Data Container view, even though a current user did not have privileges to view them.

■ **ISSUE-670407 - Fix for a Smartsheet error when generating a report**

Fixed a NullPointerException in Smartsheet import during the creation of the error file.

■ **ISSUE-670457 - Fix for when replacing an asset creates a new asset**

Fixed a problem when replacing an asset with the existing asset in the Web UI on a Node Editor screen, it added the picked asset instead of replacing the selected one. There is also a hotfix available for this solution that is applicable to saas-2023.3, step-11.2-mp2, and saas-11.2.

■ **ISSUE-670492 - Fix for when a single asset upload showed two uploads**

Fixed a problem when uploading and inserting a single asset via the 'Asset Importer' configuration in the Web UI caused the BGP ID to state that 2 files were uploaded. This happened because the empty upload form was also counted as an empty file (which was later ignored).

■ **ISSUE-670773 - Fix for the French workbench shortcut not being configured**

Fixed a setback when all shortcuts in the French locale's workbench were displaying 'Ctrl+Plus' instead of the actual shortcut.

■ **ISSUE-670794 - Fix for when the approve button is not available**

Fixed a problem when 'Approve Action' on the Node Editor was not available after adding / deleting references on the Multi-Reference component on a first tab when there was a Data Container Multi-Editor on another tab. There is also a hotfix available for this solution that is applicable to saas-2023.3, step-2023.3, and step-2023.4.

■ **ISSUE-671146 - Fix for upgrade 2023.3: Edit 'Started by' user in scheduled processes does not work**

The background (BG) process which gets created for the scheduler configured via 'Schedule Data Export' will get the 'Started by' field based on the 'Started by' field value of the Schedule Data Export BG process.

■ **ISSUE-671493 - Fix for an 2023.3 upgrade: Thumbnail in Multi Reference component changed**

Introduced a possibility to change a default thumbnail size for thumbnail header on the Web UI Node List. By default, a thumbnail size is set to medium. In order to change this property, contact Stibo Systems Support.

■ **ISSUE-671510 - Fix for when no events are generated when values update from 'EMPTY' to 'YES'**

Fixed a problem occurring when setting an LOV from null value to non-null value queued event with previous (null) value, instead of the new (non-null) value.

■ **ISSUE-671522 - Fix for importing STEPXML files resulting in creation of new assets results in error**

Improved logging when reporting the event loop in the Event Queue / OIEP. Now, more detailed log information will appear in the app server log. There is also a hotfix available for this solution that is applicable to saas-11.1, saas-2023.3, as well as step-11.1-mp4-6, step-11.2-mp2-3, and step-2023.3, and step 2023.4.

■ **ISSUE-671577 - Fix for OIEP: context splitter removes the second part of the NumberRange value**

When the number range had negative numbers during an export, the value was cut in half. Now, the number range is exported correctly.

■ **ISSUE-671797 - Fix for error importing workflow with default user assignee**

Introduced a private config property to export UserList and UserGroupList tags in STEPXML before STEPWorkflow tag in order to allow the import of non-existing users who are participating in the imported workflow. Notice: setting this property will make STEP XSD validation to fail, as PIM.xsd has not been changed yet to reflect the changed order. So, keep in mind the risk of setting this property.

■ **ISSUE-671852 - Fix for GDSN environments**

A performance fix for background processes (BGP) using parallel threads creating files in the background process area on slow file system like, e.g., Cloud filesystems. There is also a hotfix available for this solution that is applicable to saas-2023.3, step-2023.3, step-2023.4, gdsn2-receiver-7.0.69, and gdsn2-receiver-7.0.68.

■ **ISSUE-671980 - Fix for IIEP and OIEP slow functionality for STEP application**

Performance fix for when values delete. Imports deleting a lot of values will benefit from this fix.

■ **ISSUE-672072 - Fix for when no post processor is found**

Fixed the 'No post processor found' exception for Outbound Business Rule Message Processor with XSLT Post Processor configured.

■ **ISSUE-672140 - Fix for 'Match & Merge' not working after 2023.3 installation on dev system**

Fixed a problem when Match & Merge REST services executed for different configurations with different matching algorithms were failing due to the caching problem with 'Matching algorithm not found' exception. There is also a hotfix available for this solution that is applicable to saas-2023.3, step-2023.3, and step-2023.4.

■ **ISSUE-672146 - Fix for a problem when downloading an asset from the Web UI**

It was not possible to download very small assets from the Web UI. This has been fixed.

■ **ISSUE-672268 - Fix for very long runtime for small imports of STEPXML**

A performance fix to the 'feature' batch log was made to related to imports.

■ **ISSUE-672836 - Fix for when healthcheck is unable to find blob segment**

A problem in the 'Content missing value' healthcheck was found in fixed. There is also a hotfix available for this solution that is applicable to saas-2023.3 and step-2023.3.

■ **ISSUE-673042 - Fix for Excel export: missing lines from Web UI export**

Fixed a problem when exporting multiple products from the Web UI with the references to the same assets caused a discrepancy in the exported Excel file. The assets only appeared once instead of being exported for each product. It happened because of the bug in the exporter, caused by the Web UI sorting order preservation.

■ **ISSUE-673086 - Fix for export not working for a user group after recent 11.2 upgrade**

Fixed a NullPointerException that appeared in a very corner case, when supplier privileges were checked before checking any other attribute privileges during the export. There is also a hotfix available for this solution that is applicable to saas-2023.3, step-11.2-mp2, step-11.2-mp3, step-2023.3, and step-2023.4.

■ **ISSUE-673294 - Fix for when there are high response times in the Web UI**

Now, all global representations from the Web UI Main screen are cached for 30 seconds (by default) to increase a performance of the Web UI Node List / Node editor component when retrieving the same information about global representations multiple times (depending on configured sub-components).

■ **ISSUE-673867 - Fix for when index creation is not working in the publication**

Fixed a problem when creating an Alpha Index in workbench would not work. There is also a hotfix available for this solution that is applicable to saas-11.2, saas-2023.3, as well as step-11.2-mp1-3, step-2023.3, and step 2023.4.

■ **ISSUE-674382 - Fix for when auto upgrade failed after Cassandra import**

Fixed a problem with the auto upgrading database. Some of the plugins were executed in the wrong order, so one plugin would fail because it depended on another plugin being run, which was run at latter stage. This would happen if you skipped some major versions of STEP. If you upgraded to all lower versions of STEP one by one, this did not happen.

■ **ISSUE-674526 - Fix for 2023.3 upgrade: Use of 'Upload and Insert' function makes images disappear**

Fixed a problem when an inserted and uploaded asset on the Web UI Node Editor Referenced Asset Representation component was intermittently disappearing after pressing a Save button. There is also a hotfix available for this solution that is applicable to saas-2023.3, step-2023.3, and step-2023.4.

■ **ISSUE-674896 - Fix for an error in the 'Packaging Hierarchy' Web UI screen on WF - Initiate**

Fixed an IndexOutOfBounds uncaught exception which appeared on the Web UI Node List when localizing number / integer attributes without units.

■ **ISSUE-675038 - Fix for fatal and internal server errors**

The fix limits the number of rows shown on the Classification Web UI screen to 10K - like other places in the UI. Inadvertently, this limit had previously not been implemented for this screen, which prevents the application from running out of memory when a lot of nodes is shown on the screen. Further more, the code populating the screen has been changed to be more conservative with its memory usage.

■ **ISSUE-675082 - Fix for error importing workflow with default user assignee: when UserList tag is after the STEPWorkflows tab in the STEPXML**

When changing the handling of a change package item to 'Ignore,' the item still had to be approved before the change package could be sealed. This has been fixed.

■ **ISSUE-675446 - Fix for when 'Word Matcher' is not working**

Fixed a NullPointerException for editing a normalizer in a Decision table, when there is a word matcher with Formula expression configured. There is also a hotfix available for this solution that is applicable to saas-2023.3, step-2023.3, and step-2023.4.

■ **ISSUE-675601 - Fix for an issue after implementing In-Memory**

Event-based export: Fixed meta-data of event so that it will export correct nodeType when running In-Memory.

■ **ISSUE-675980 - Fix for optimistic verification problems when moving objects through workflow**

Fixed a caching problem when running STEP on Oracle without In-Memory. The bug could incorrectly cause optimistic locking errors.

■ **ISSUE-676533 - Fix for Project Team Migration: Workbench - republish matching events throwing error**

Customer previously reported an error with their matching algorithm configuration. Upon republishing, an error occurred. Now, it should be possible for the customer to republish more than 1,000,000 entity children to the event processor. There is also a hotfix available for this solution that is applicable to saas-2023.3, step-2023.3, and step-2023.4.

■ **ISSUE-677379 - Fix for 'java.net.SocketTimeoutException: Read timed out' errors on sidecar0.log - unknown but regular sidecar restarts occurring**

A new configuration property has been added that allows you to set the timeout used when the Sidecar connects to the application server when the Sidecar is reporting its status. There is also a hotfix available for this solution that is applicable to saas-11.1, saas-11.2, saas-2023.3, as well as step-11.1-mp4-6, step-11.2, step-11.2-mp1-3, and step-2023.3, and step 2023.4.

■ **ISSUE-677897 - Fix for NPEs on Dev environment**

Fixed NullPointerException thrown by the OIEP/IIIEP monitoring sensor, if the OIEP/IIIEP cannot be retrieved (was deleted when monitoring tried to find it).

■ **ISSUE-678556 - Fix for Web UI warning: The node could not be expanded as it has more than the configured maximum of displayable children**

Fixed a problem when entity references were counted twice, which caused a 'The node cannot be expanded...' message to be shown in Web UI when trying to expand an entity with a huge amount of references - but not big enough to prevent it from being expanded.

■ **ISSUE-679582 - Fix for duplicate data container row being created with same data container key**

HOTFIX-7163 is being prepared to fix the problem with 'SnapshotTooOldException' when running 'Check Duplicate Key' on a data container type.

■ **ISSUE-679677 - Fix for a setback: Certain DTP documents might get inconsistencies introduced by 'Upgrade Plugin'**

There was a bug that could cause inconsistencies in DTP documents (and Assets). Now, the upgrade plugin for injecting stibo.uid values on DTP documents will skip documents having any existing stibo.uid values, and the functionality will work as expected.

■ **ISSUE-679743 - Fix for certain ACES Imports failing with java.util.ConcurrentModificationException**

Fixed ConcurrentModificationException inside of JS scripting API caused by race conditions.

■ **ISSUE-679894 - Fix for when large amount of LOV values created an error**

Fixed a problem when an error message about a huge amount of LOV values was shown on the Web UI Create Product Variant action dialog when the variant attribute link contained the LOV filter, which decreased the amount of values, but the link was inherited.

■ **ISSUE-680663 - Fix for when editing LOV values in the Web UI destroys inline formats**

Fixed an incorrect error message while editing an LOV value with HTML tags in the Web UI.

■ **ISSUE-680702 - Fix for when comparer functions cannot be outsourced into the library**

Fixed a NullPointerException which occurred when calling comparator function from a business library in a JavaScript business rule.

■ **ISSUE-681142 - Fix for when the search option in the 'Select Node(s)' screen does not work when adding reference**

Fixed a problem when picking a suggestion on a 'Search' tab of an 'Add reference' node picker on the Web UI Multi Reference screen caused a search result to not display, if a search was configured with attribute value criteria. It happened because of the second search being executed after picking a suggestion on a node id, which did not pass the configured attribute criteria. Now, the second unnecessary search has been removed.

■ **ISSUE-682027 - Fix for 'hidden' bind not working work on a screen for Assets**

Now, a Hidden JavaScript bind will correctly work for a business condition, configured on a Web UI Node Editor to hide an attribute value for a currently-selected Asset..

■ **ISSUE-683351 - Fix for inability to map multi-variable to data container**

Fixed unexpected exception when trying to map a multi-variable mapping rule to a data container in workbench Import Manager's mapping pop-up.

■ **ISSUE-683400 - Fix for when editing the 'Global Navigation Panel' tree or search fails with exceptions**

Fixed a setback, when navigating to main area components in Design Mode with Context Global representation configured, caused the unexpected exception to appear due to the problem in caching functionality.

■ **ISSUE-684295 - Fix for 'Show LOV IDs' setting in Web UI not working in Multi Edit screens**

Now, LOV IDs will be shown in typeahead suggestions for the Table Header Value on Web UI Node Lists, if the Show LOV IDs parameter is configured in Design Mode for this header..

■ **ISSUE-684371 - Fix for workbench: Internal application error when choosing BMEcat 2005 in the Export Manager**

Fixed NullPointerException that was thrown when choosing the BMECat2005 plugin in STEP Workbench Export Manager without doing the EasySetup for this component, so the attribute 'stibo_ISO-639-2' was missing on a system.

■ **ISSUE-684606 - Fix for inability to create an LOV value with <> symbols**

Fixed adding values to LOV with STEP tags.

■ **ISSUE-685003 - Fix for Promote Article Ordinary job processing slowly**

Fixed performance problem during matching that was caused by unnecessary calculated attribute value calculations, even if the particular attribute is not a part of the attribute group, configured for a survivorship rule.

■ **ISSUE-685098 - Fix for viewing some assets in the Web UI causing an error**

Fixed a problem when an unexpected exception was thrown in Web UI when trying to view the asset content for an asset, which size is less than 4 bytes.

■ **ISSUE-685859 - Fix for space usage in /tmp**

When importing assets with the Web UI Asset Importer, temporary files would be left behind in /tmp, which could eventually cause the disk to run full. This has been fixed.

■ **ISSUE-687535 - Logging added for issue: Pagination is not working in Thailand context**

Additional logging has been added to help diagnose the root cause of the problem.

PATCH RECIPE

The 2023.3 (11.3)-MP1 baseline patch can be installed with the following recipes:

```
./spot --apply=to:step/platform/step-2023.3-mp1.spr
```

—OR—

```
./spot --upgrade=step:2023.3*
```

**** Before installing the recipe, review the baseline and component versions that the system will be updated to before applying. Verify that the baseline and/or components are the correct versions to be applied (i.e., the versions you did testing on—and not a higher, untested version).***

For on-premises systems, refer to the SPOT Program documentation for more information, including how to use the SPOT `--upgrade` command to also find compatible components that can be added at the same time as the baseline patch (`--upgrade=a11`) in the SPOT Program topic of the System Administration Guide found in Downloadable Documentation. For assistance, contact Stibo Systems Technical Services. For SaaS systems, contact Stibo Systems. For customers that have custom add-on components and/or if Stibo Systems Support is deploying your system upgrades and patches, submit an upgrade request via the Service Portal.

Note: Customers may want to search the Service Portal for their Maintenance Patch Issue Numbers. To do so, while in the Service Portal, navigate to Issues (in the header bar) and then select 'Search for Issues.' Click on the 'Advanced' option on the filtering bar, and then type in 'issue=' and the Issue number from the Maintenance Patch Notes. Press Enter or click the magnifying glass icon to run the query. **Users will only be able to view Service Portal issues for Maintenance Patch Issue Numbers that they have privileges to access. If the issue is not applicable to the user searching, then a 'No issues were found to match your search' message will be displayed.**